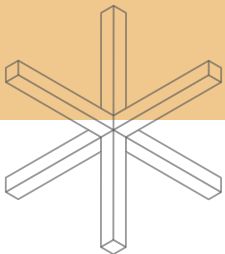
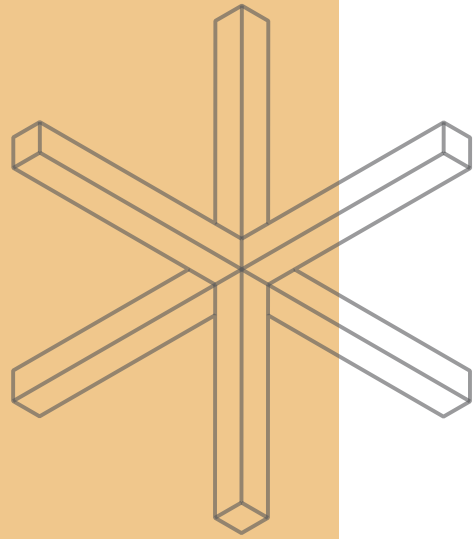
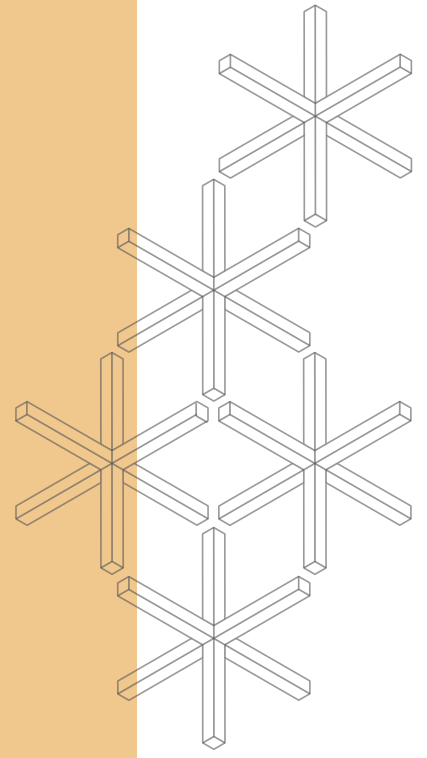




# Partitions

WallCovers & Doors



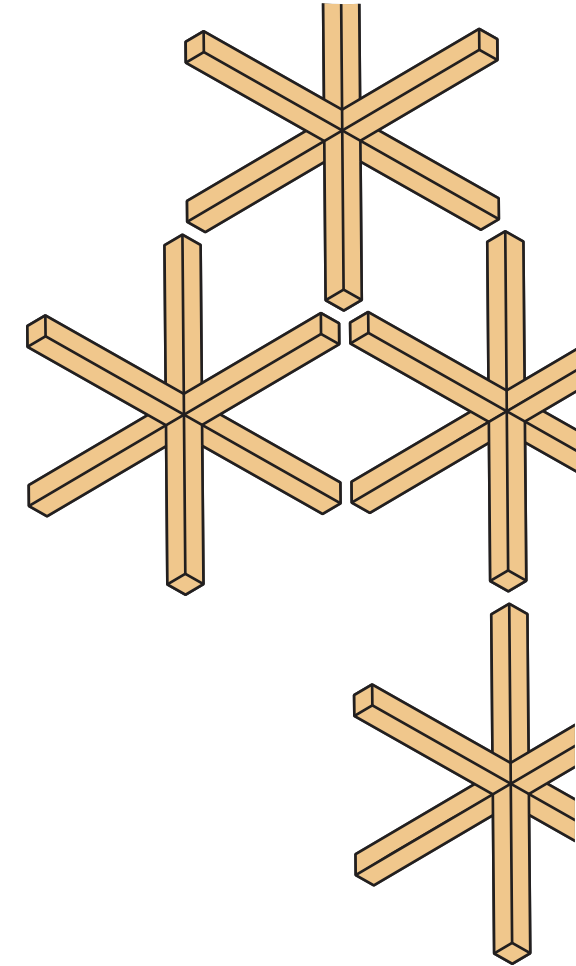
**paadiran**  
since 1974



Scan Me  
Paadiran Site

03 WallCover

31 Door

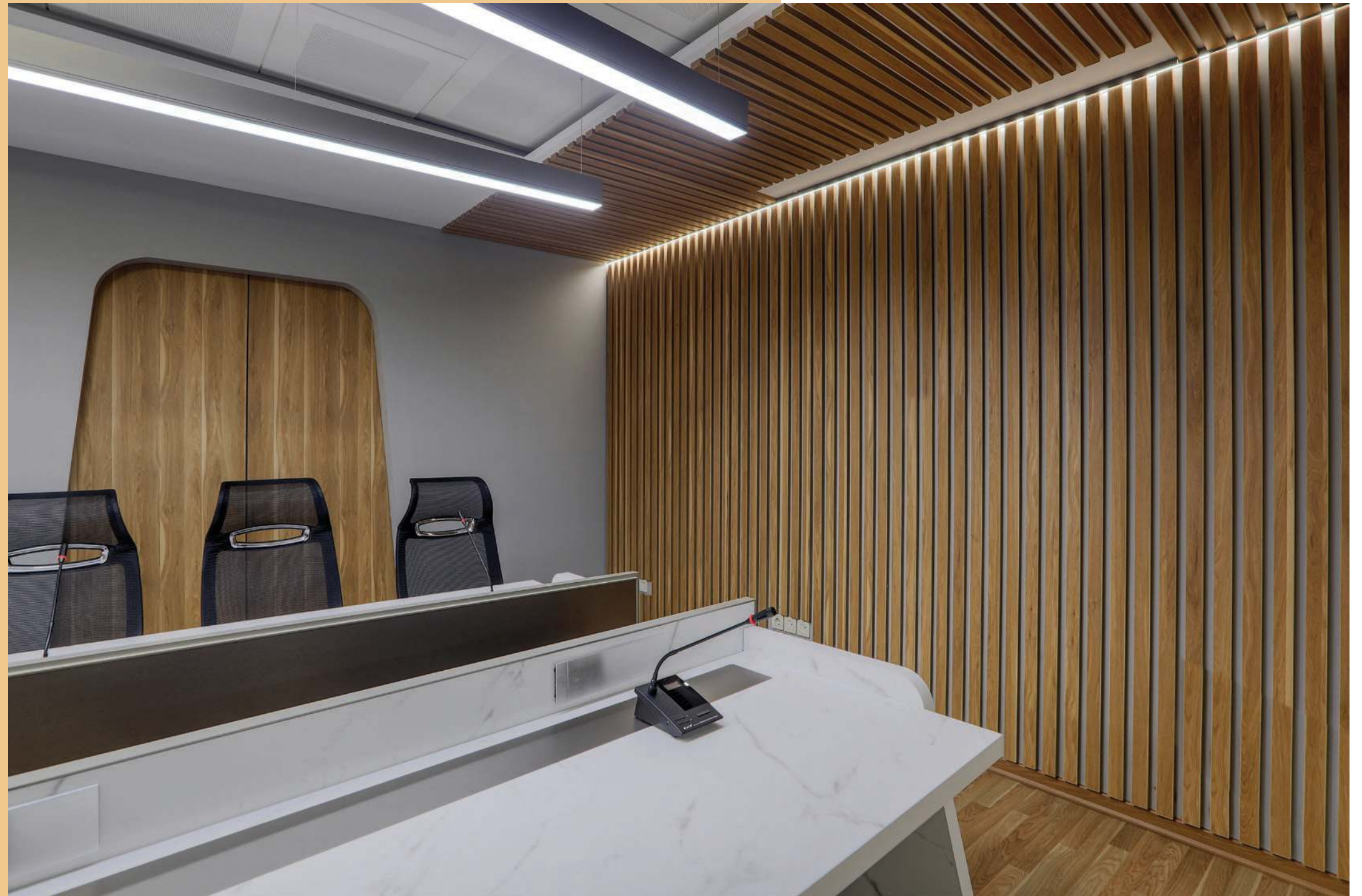


In a very real way, designers create the human environment; they make the things we use, the places we live and work, our modes of communication and mobility. Simply put, design matters. And at a moment in our history in which the scientific community has issued serious warnings about the negative impacts of our flawed designs-from global warming and water pollution to the loss of biodiversity and natural resources-designers have a critical role to play in the creation of a more just, healthful and sustainable world

# Wall Cover

Office wallcoverings made of wood or MDF have a very long life, so you do not need to spend extra money to repaint the building.

They have a very good ability to maintain the heat and cold of the space and prevent energy wastage. These types of office wall panels are resistant to scratches and impact. They are also excellent insulators for soundproofing.







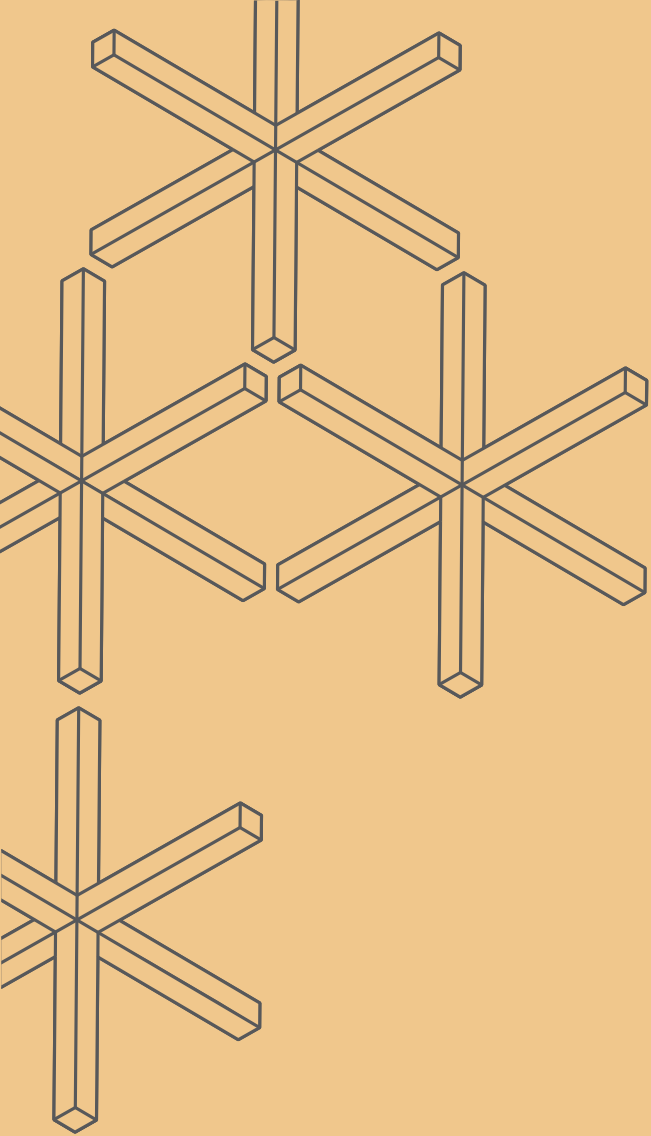
It has been proven that the spaces we inhabit have distinct physiological and psychological impacts on us.





The location, design and quality of workspace is even more important with an increasingly agile workforce, not less. Office environments will be curated to increase flexibility of function, to provide inspiration, to support learning and mentoring, to reinforce purpose, to embody corporate culture and to accommodate meaningful experiences for employees.





One of the reasons workplace wellness has garnered so much popularity over the past several years is because investing in wellness pays off. With the right workplace wellness strategy, organizations can reduce turnover, increase productivity, reduce stress, and prevent burnout. Wellness programs have also been shown to improve employee morale and overall job happiness.

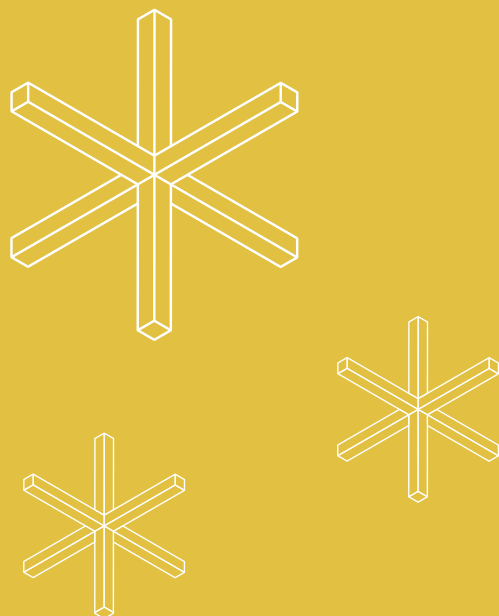






MDF wall coverings have a UV layer, which of course is present in most of today's coatings, and this makes it possible for wall panels that their color does not change after a while and have high stability against radiation such as sunlight.



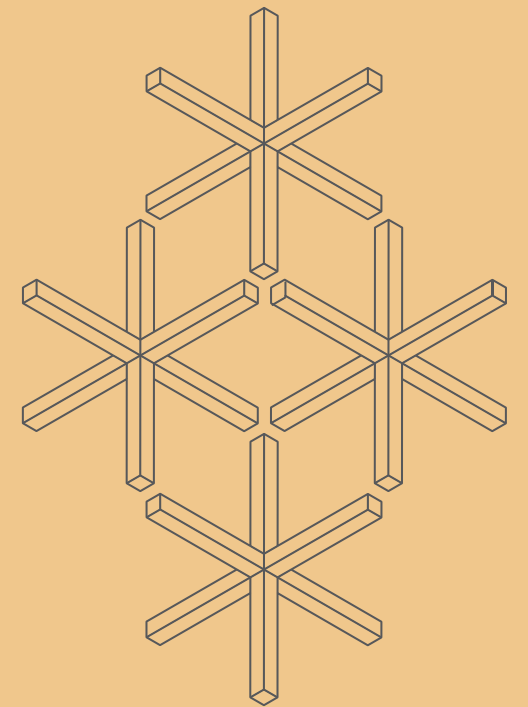
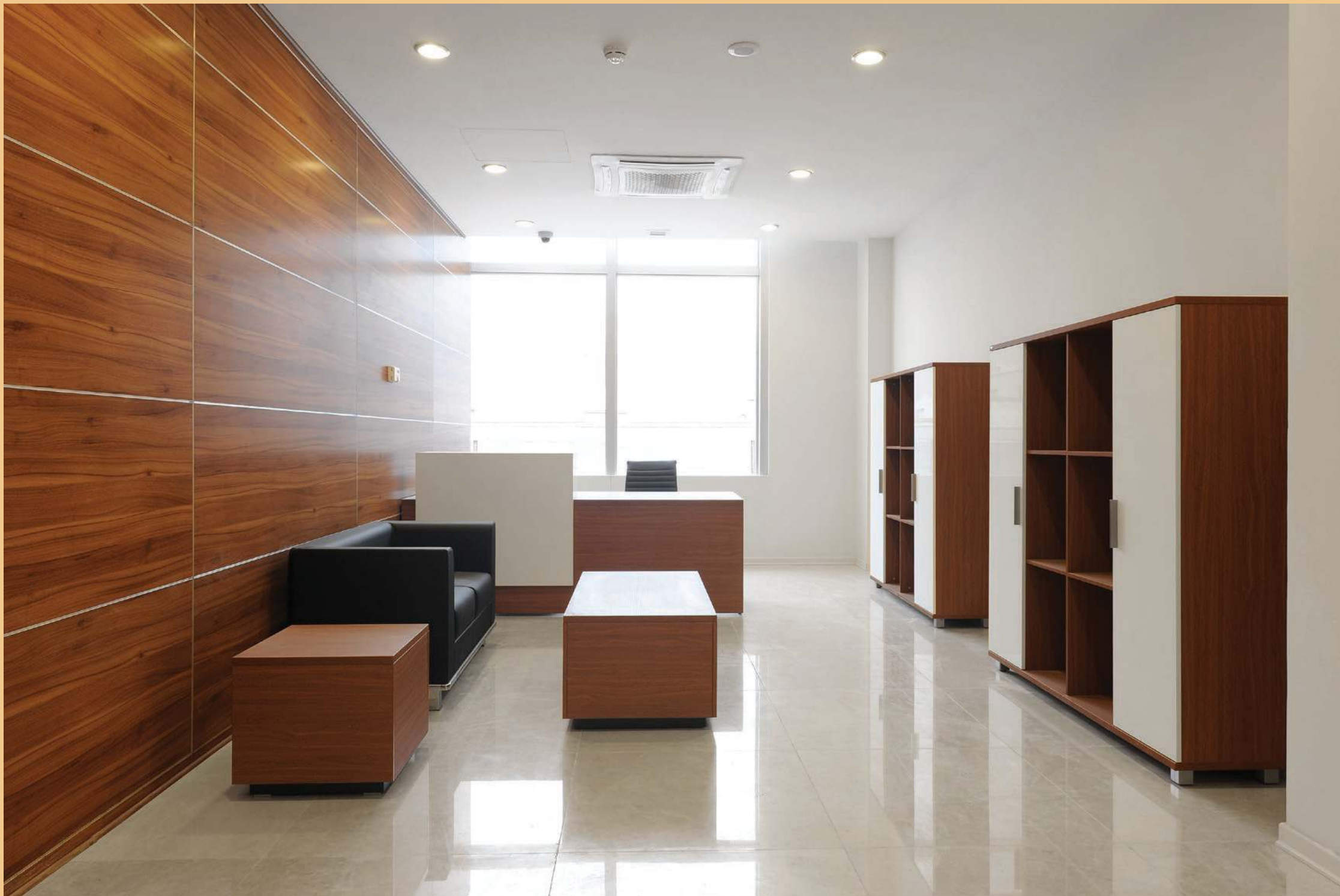


Our offices allow us to be flexible and collaborative in our approach to design in order to create environments that are resilient and adaptable. This is more important than ever as design tackles some of the world's greatest challenges from social injustice to the health pandemic to environmental crises.



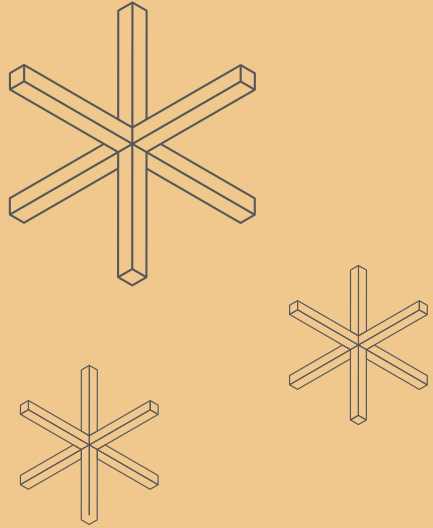
Scan Me  
Paadiran Site





When people talk about workplace wellness, they tend to talk about exercise programs, daily activity challenges, and nutrition. But there's more to wellness than meets the eye.





Giving employees opportunities to apply their new skills will not only help them hone on that skill, but also ensure that they not forget about it. It's also a great way to encourage employees to engage in constant learning



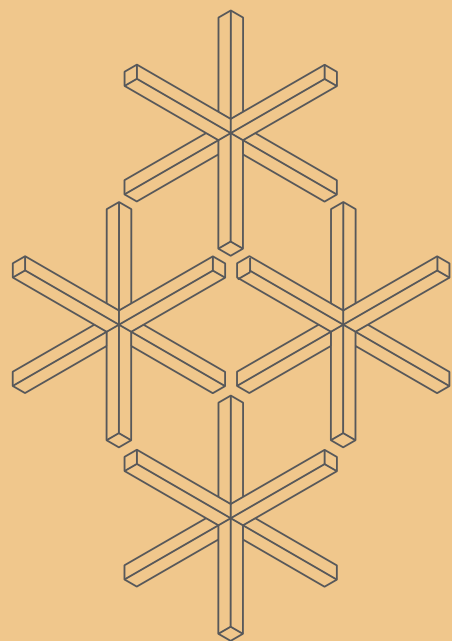


We now value space and the experience of being together more than ever. The office matters as a place to come together with each other for a common purpose. And for employees, choice, privacy, unassigned seating, and health and well-being are top of mind.





Isolation, loneliness, and depression levels are expected to decrease as people go back to the office given that this will provide some escape from the monotony of working from home. The office will become a safe haven, especially for those who are craving social interactions and thrive from working around others.







# Wall Cover & Door

Three of the primary long-term drivers of the usage of the office as a workplace will be connection, collaboration and career.



As workplace design becomes less hierarchy-driven, it is important to assure people that their role within the company will still be recognized. Additionally, many don't realize that open offices are often a hybrid of shared and private space that meets a wide range of needs. So be prepared for initial push-back and possible anger from employees, but keep in mind that with proper communication, education, and patience, you can change their perspective.





Modern workplace makeovers are a fact of life. It's taken plenty of time, but the workplace is now becoming far less individualized. The traditional systems and beliefs that standard cubicles and offices propagated for so long are being shed and replaced with behavioral design standards that favor collaboration. As the sophistication and value of this trend increase to better align with employees' work behaviors, transitional tactics will continue to be developed to support and ease the changeovers. Keep in mind: the best behavioral designs will not only encourage teamwork and boost engagement, but they will do so with transparency—while simultaneously catering to a human's capacity for imagination.





# WallCover



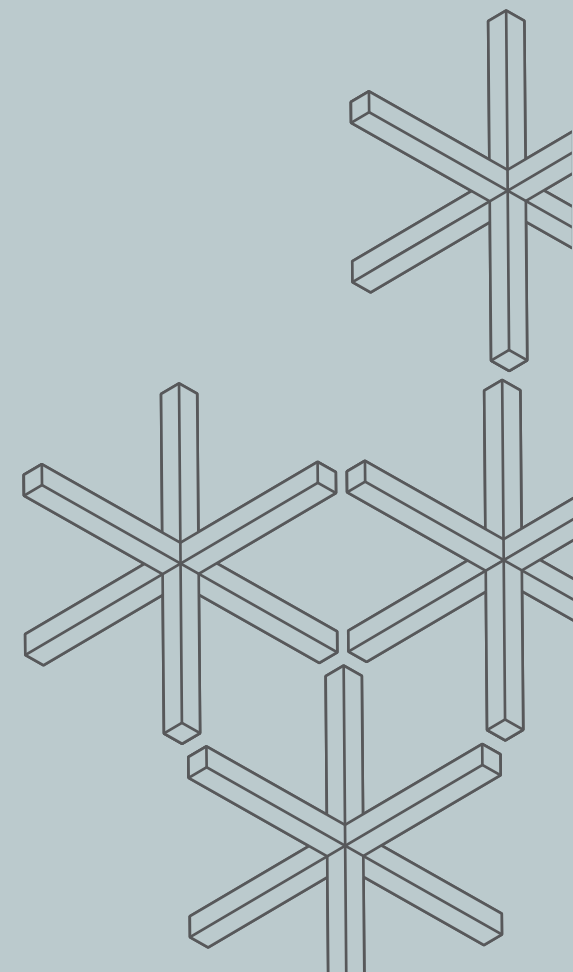
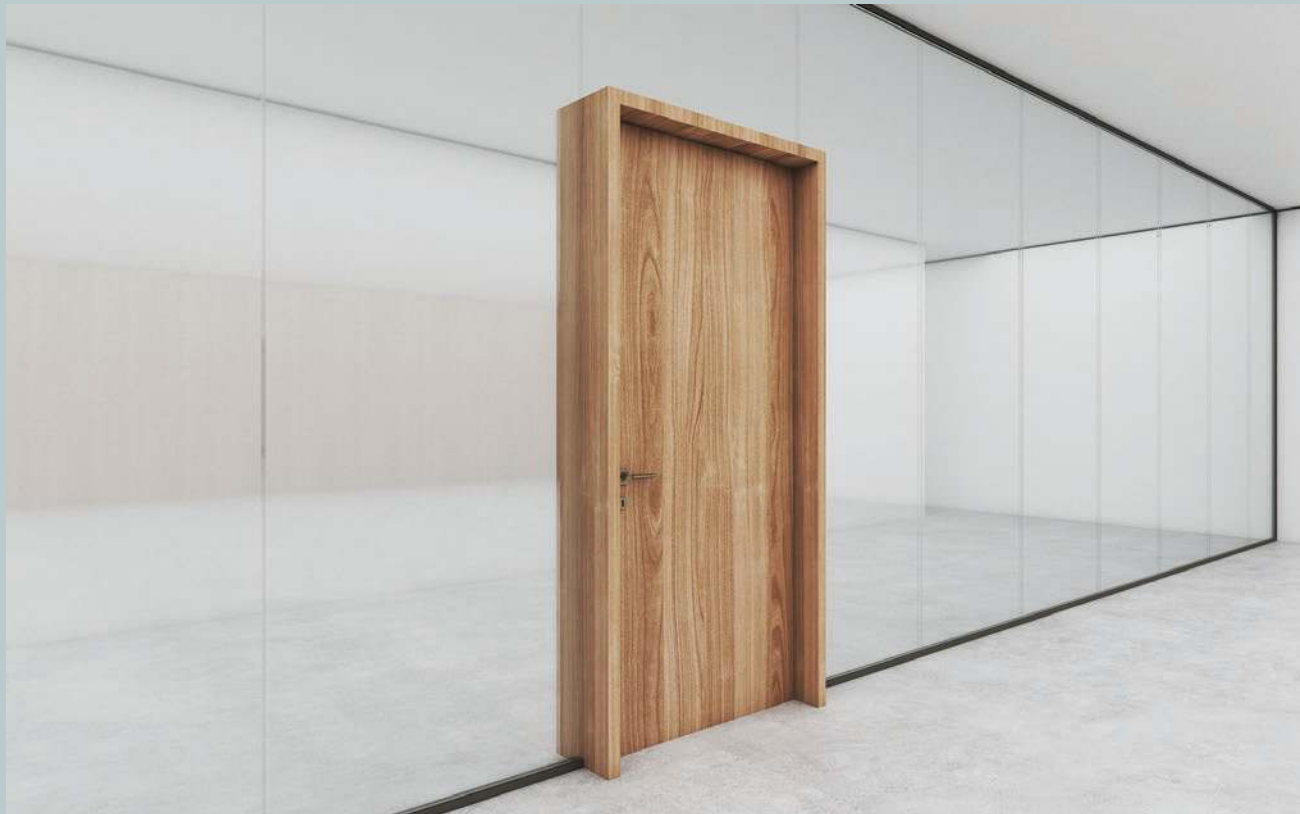
Coworking has become the new normal in that it has become the expected and preferred workplace of today's workforce. This is evidenced in the fact that large companies are increasingly seeking to enhance the workplace experience as a means to attract and retain talent, and that a significant percentage of workers who have the option to work from home or a coffee shop prefer to work from a coworking space.



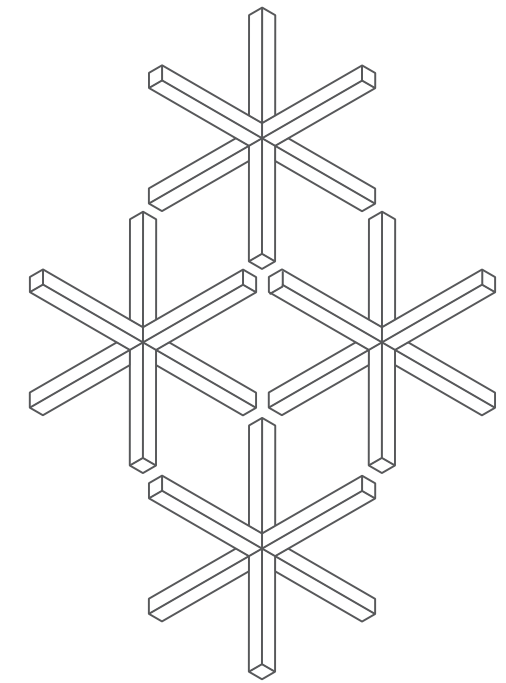


# Doors

A door is a hinged or otherwise movable barrier that allows ingress into and egress from an enclosure. The created opening in the wall is a doorway or portal. A door's essential and primary purpose is to provide security by controlling access to the doorway (portal). Conventionally, it is a panel that fits into the portal of a building, room, or vehicle. Doors are generally made of a material suited to the door's task. Doors are commonly attached by hinges, but can move by other means, such as slides or counterbalancing.







It has been widely documented that a person's wellbeing impacts overall company performance. Workers who feel well are overall more productive, more engaged, and happier at work. On the other hand, if a worker's wellbeing is suffering, their work will also suffer, and so will their feelings toward their employer.





By definition biophilic design is a concept used within the building industry to increase occupant connectivity to the natural environment through direct nature, indirect nature, and space conditions.









Now we have an opportunity to rethink the physical workplace to create spaces where employees not only want to be, but to do their individual and collective best work.

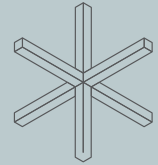
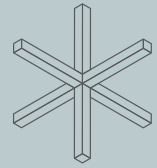
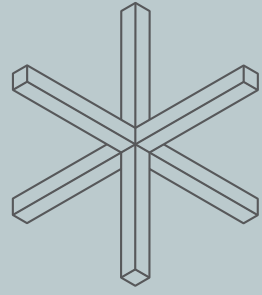




Regardless of what color palette is ultimately chosen, color is a powerful tool to help create a productive workplace. Effective workplace design must take into account how people react to color. As light waves scatter all around us, what reaches our eye has a substantial impact on how we perceive the world, and our ability to interact with it



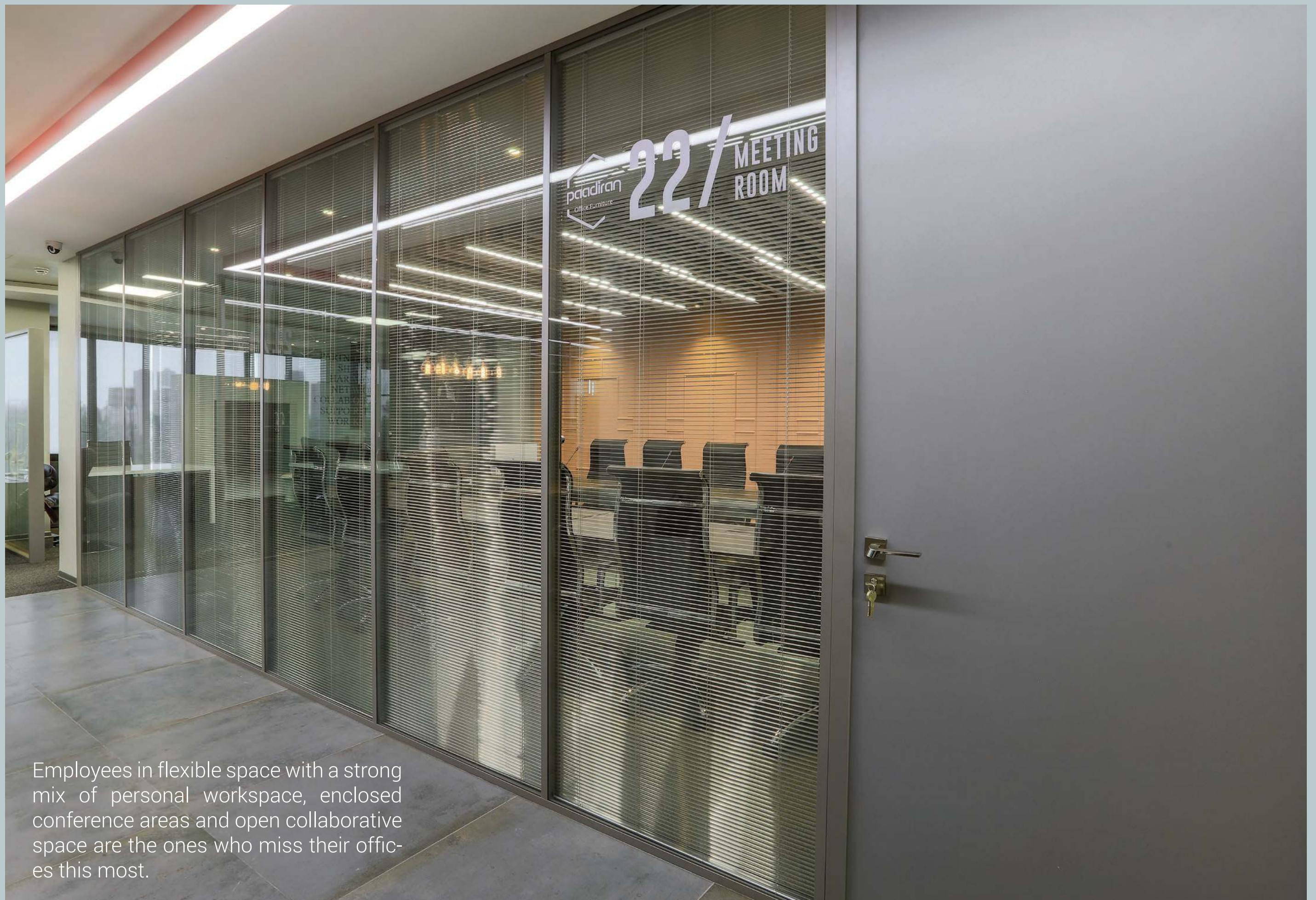




If you want upskilling to be a part of your company DNA, then as a company, you need to make time for upskilling. This means allowing employees to participate in upskilling activities during their work hours.







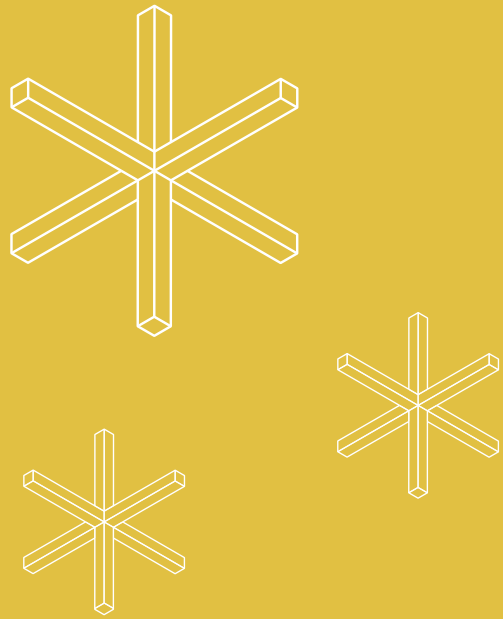
Employees in flexible space with a strong mix of personal workspace, enclosed conference areas and open collaborative space are the ones who miss their offices this most.





Creativity is nothing but the way to solve new problems.





Depression, burnout, stress, and anxiety have reached new highs; it's important that leaders think of creative ways to address these issues before they spiral out of control.





In recent years, wellness has become a top priority for employers. Leaders are realising that a healthy workforce is a happier workforce, which equates to better levels of engagement, productivity and company loyalty, not to mention fewer sick days.





19 / MEETING ROOM

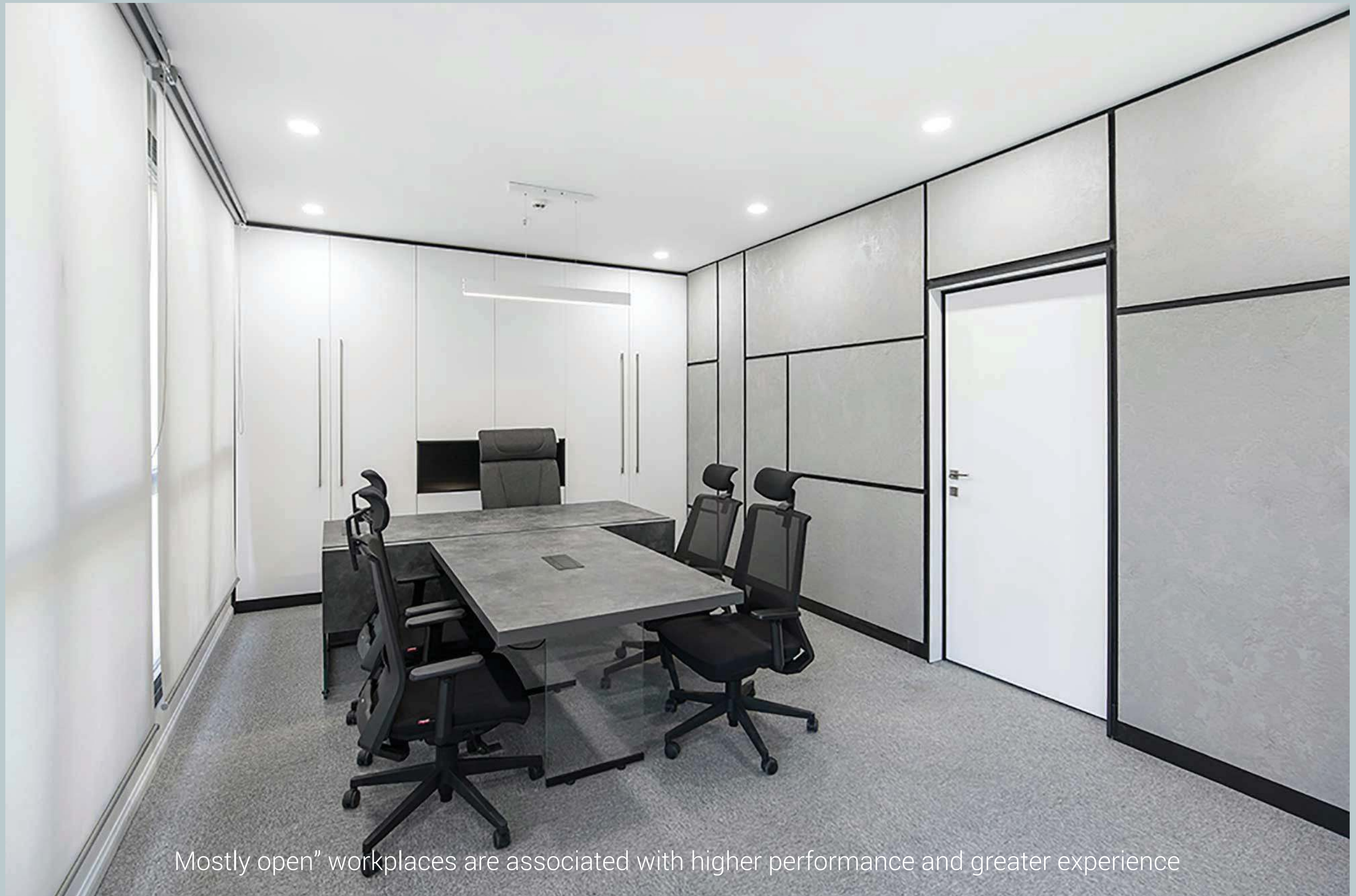
Employees who say their employer is helping them feel connected are four times more likely to report feeling well supported.





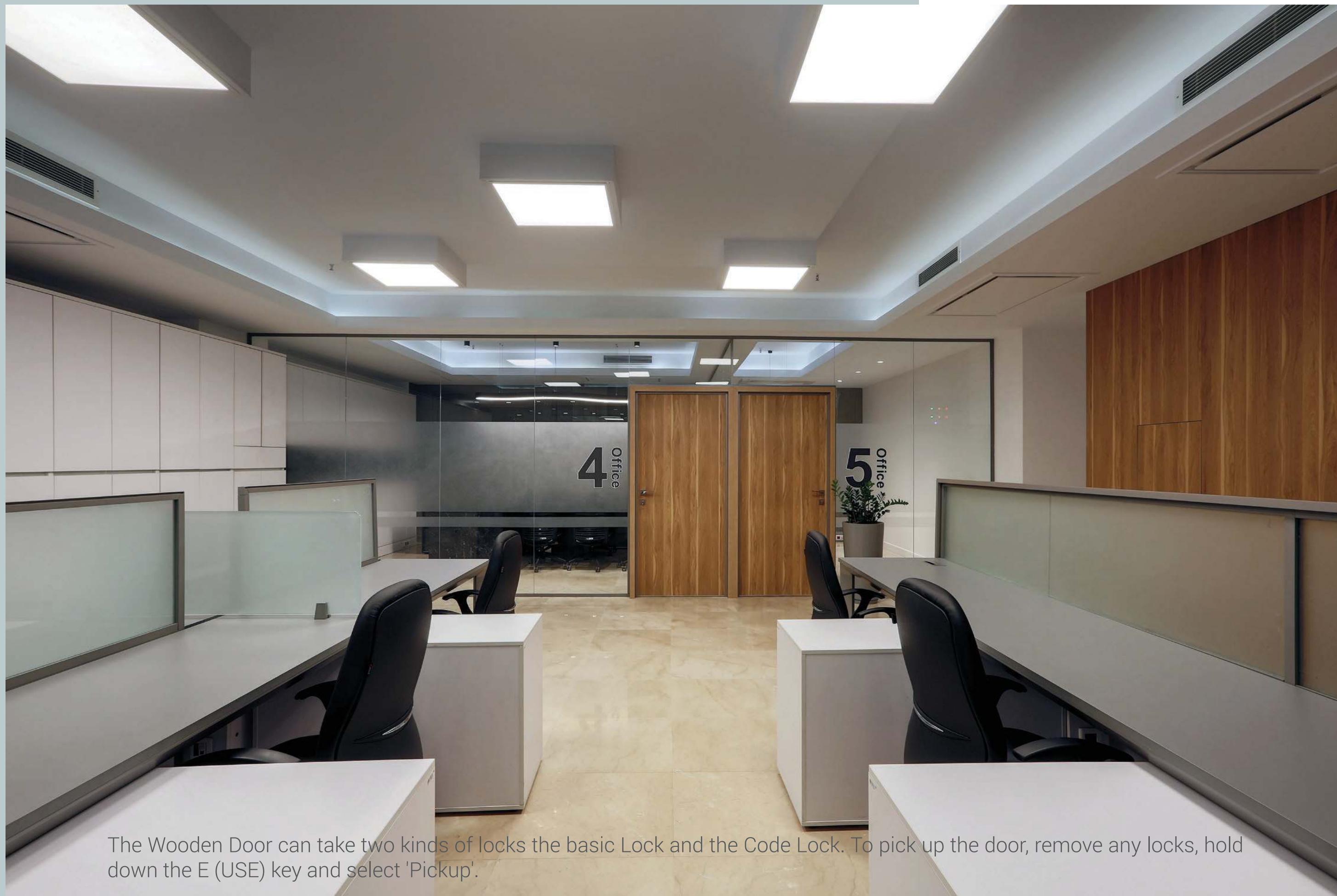
Choose comforting accessories, make the most of natural light, add easy maintenance houseplants, introduce sustainable materials and choose calming colours.





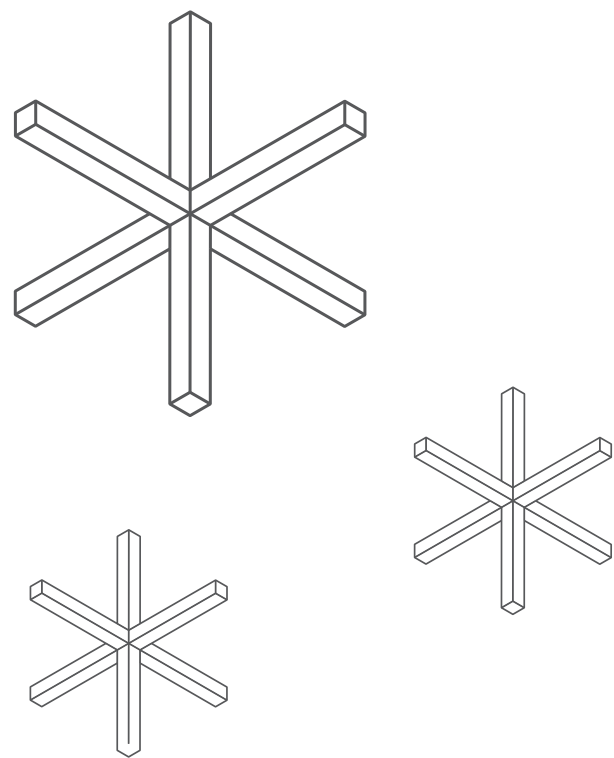
Mostly open" workplaces are associated with higher performance and greater experience





The Wooden Door can take two kinds of locks the basic Lock and the Code Lock. To pick up the door, remove any locks, hold down the E (USE) key and select 'Pickup'.





Data shows that employees who have regular conversations with their managers are able to better do their work and take care of themselves.

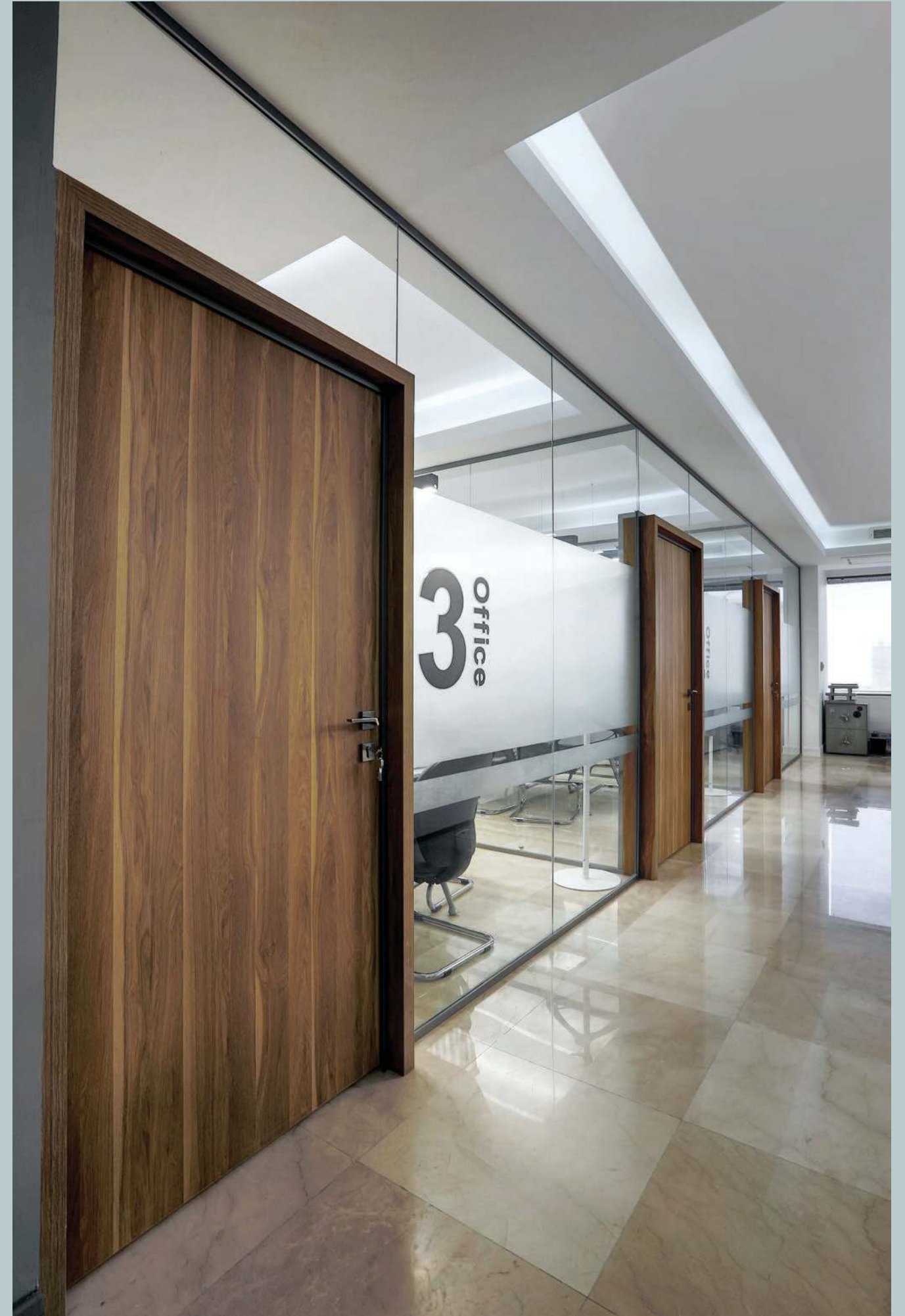


Scan Me  
Paadiran Site





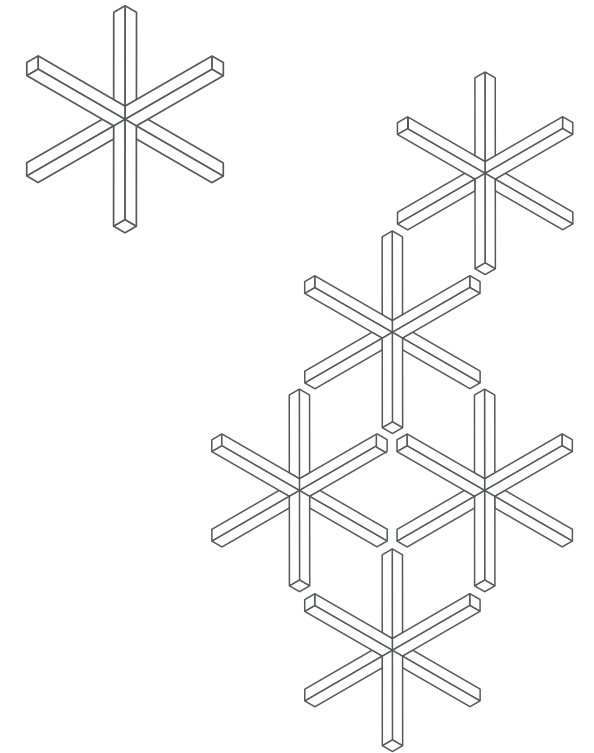
The earliest recorded doors appear in the paintings of Egyptian tombs, which show them as single or double doors, each of a single piece of wood. People may have believed these were doors to the afterlife, and some include designs of the afterlife. In Egypt, where the climate is intensely dry, doors weren't framed against warping, but in other countries required framed doors—which, according to Vitruvius (iv. 6.) was done with stiles (sea/si) and rails (see: Frame and panel), the enclosed panels filled with tympana set in grooves in the stiles and rails. The stiles were the vertical boards, one of which, tenoned or hinged, is known as the hanging stile, the other as the middle or meeting stile. The horizontal cross pieces are the top rail, bottom rail, and middle or intermediate rails.





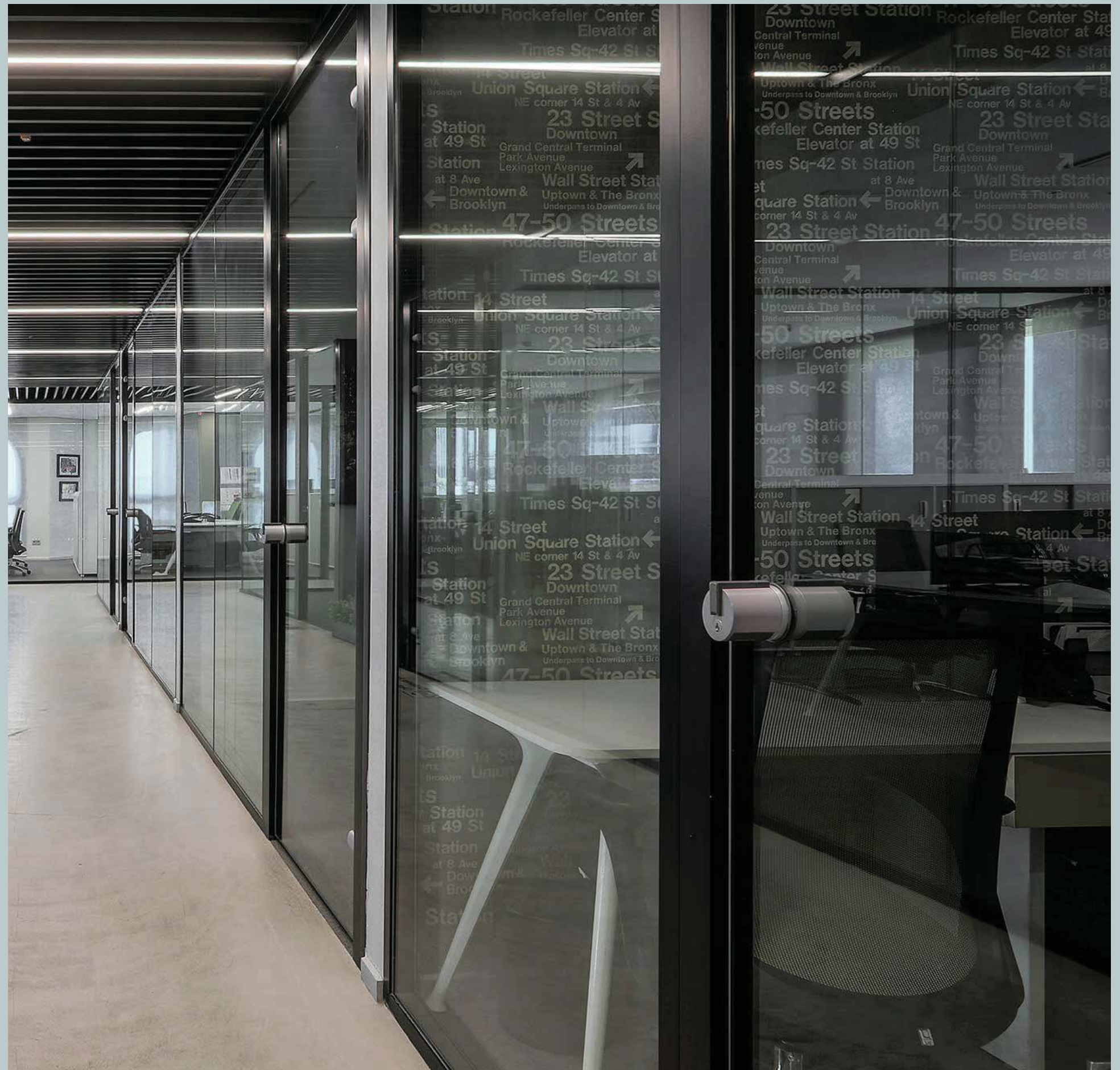


We want to meet face-to-face, socialize, brainstorm, and connect with each other again. This is how we build community, strengthen relationships, coach and mentor, and reinforce our shared purpose and culture.

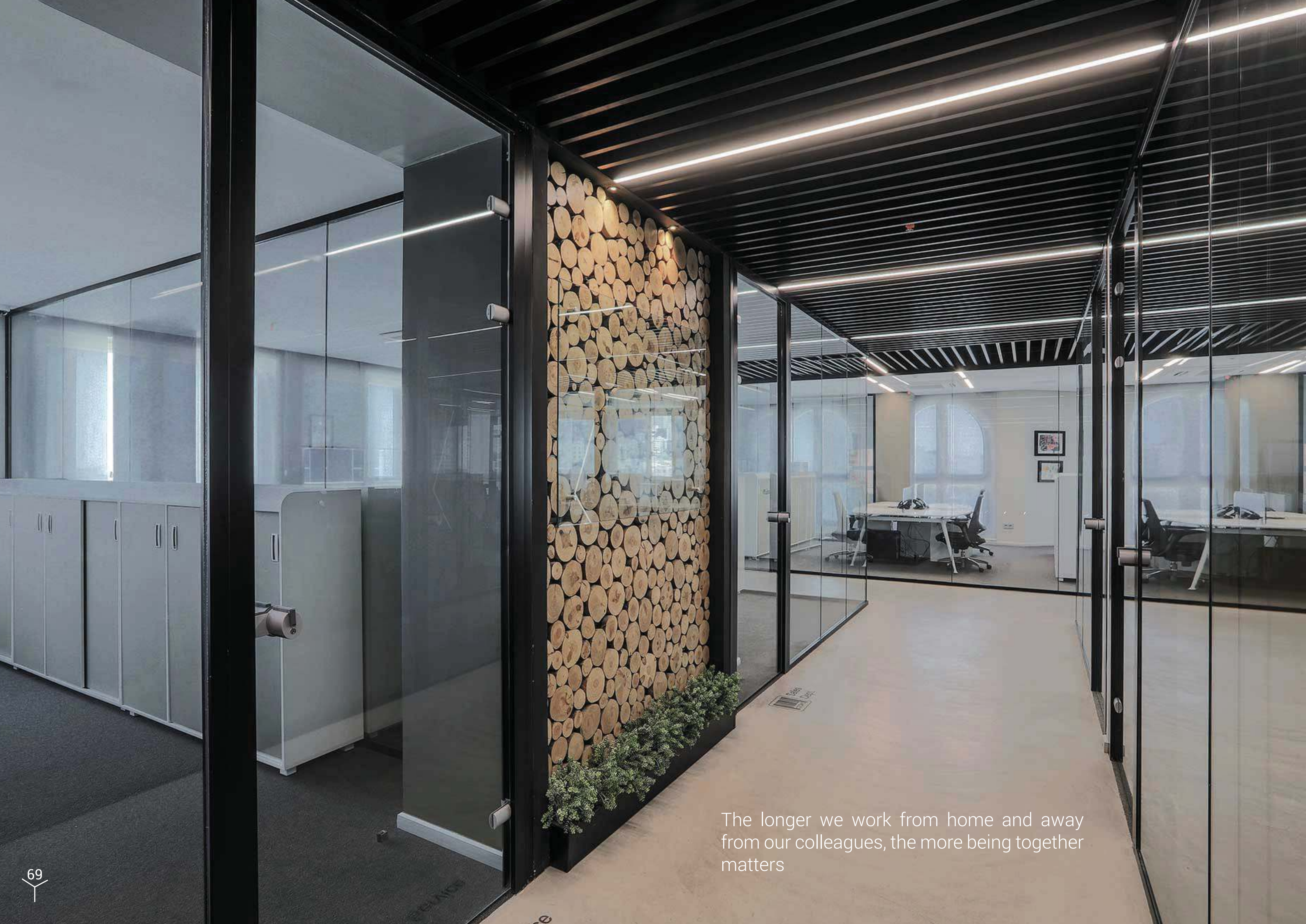




Organizations should make it a priority to provide employees with ample opportunities to test out their new skills. This can be through involvement in new projects, new responsibilities, or through voluntary opportunities.







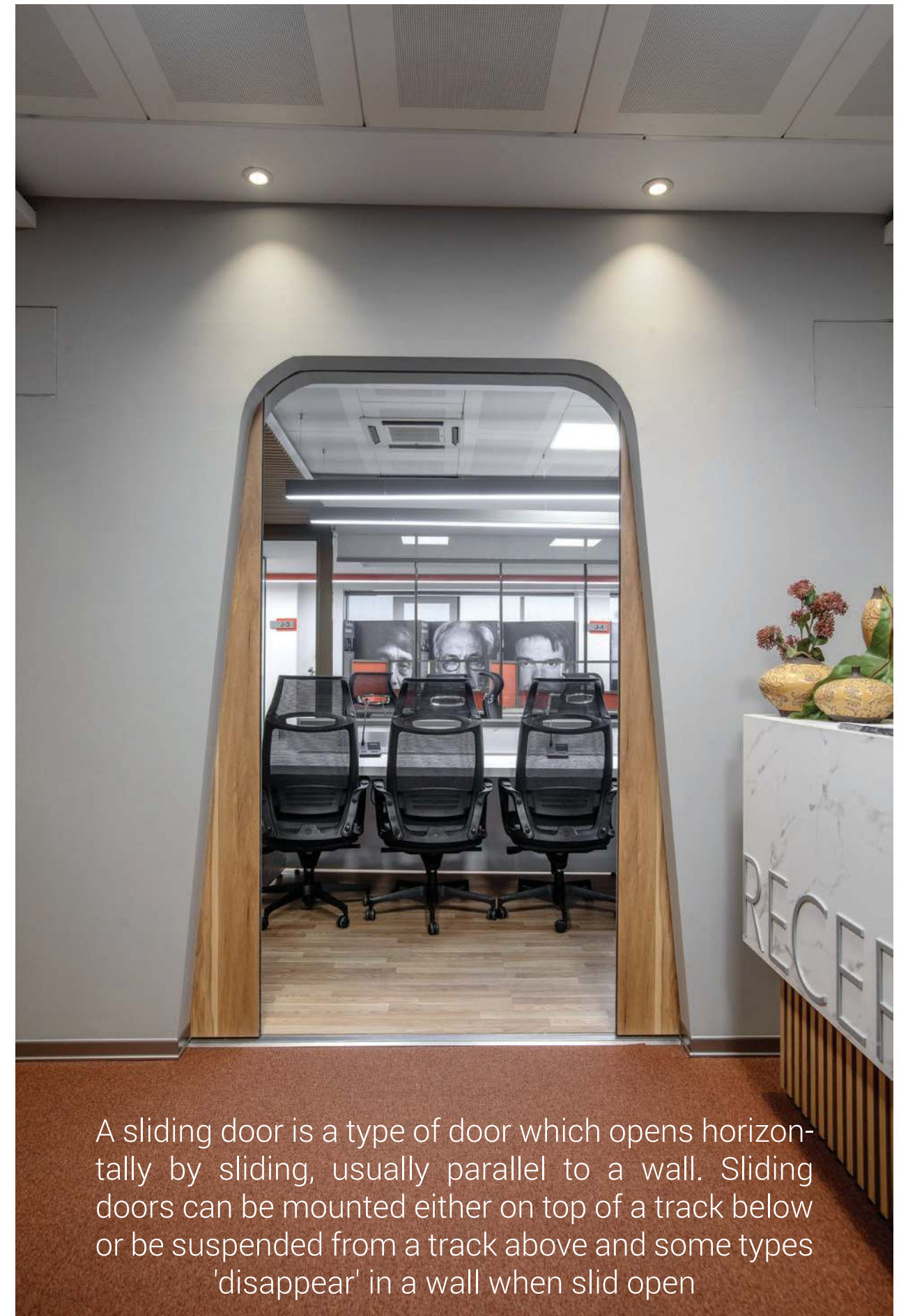
The longer we work from home and away from our colleagues, the more being together matters





# Sliding Door





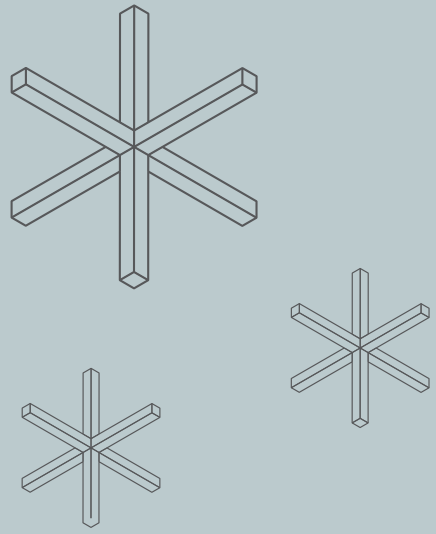
A sliding door is a type of door which opens horizontally by sliding, usually parallel to a wall. Sliding doors can be mounted either on top of a track below or be suspended from a track above and some types 'disappear' in a wall when slid open





The colors around us affect our perception of the world more than we realize. They impact our moods and how we interact with the world and one another. Some colors are known to soothe us, some to energize, while others distract or even aggravate us.





The office is one of the places where people sit all day. The excessive amount of sitting that happens at the workplace also has a detrimental effect on the skeletal system, especially skeletal muscles.

