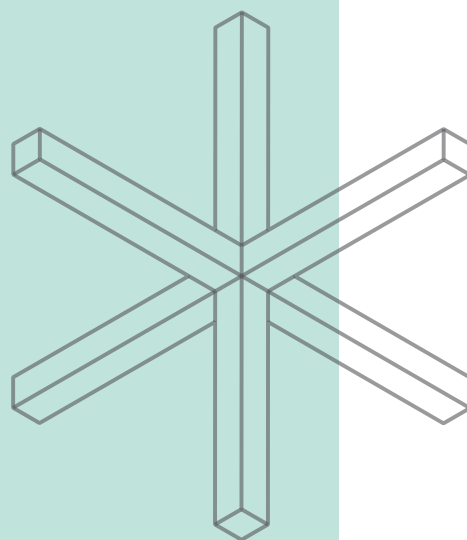




Projects 2018

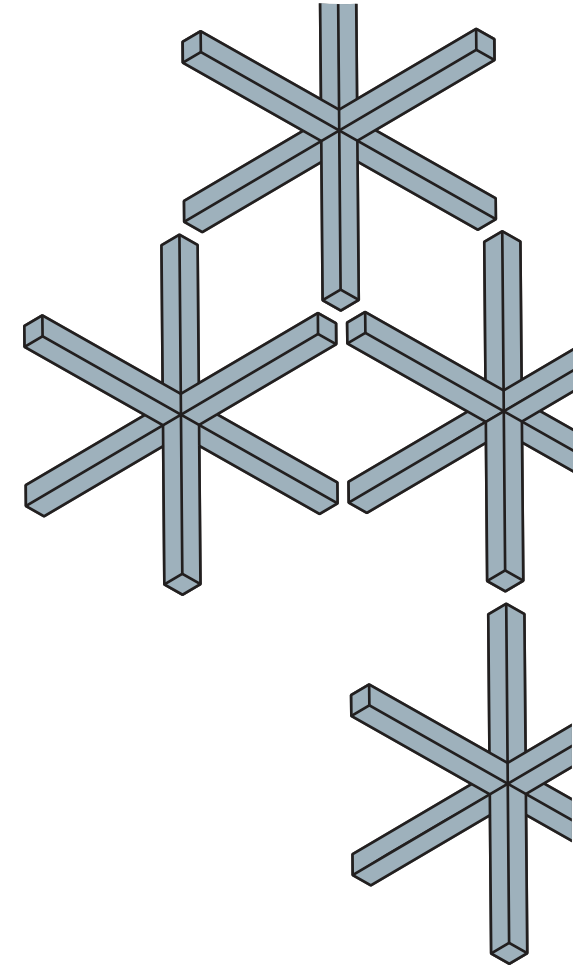


paadiran
since 1974



Scan Me
Movie About
Paadiran Showroom

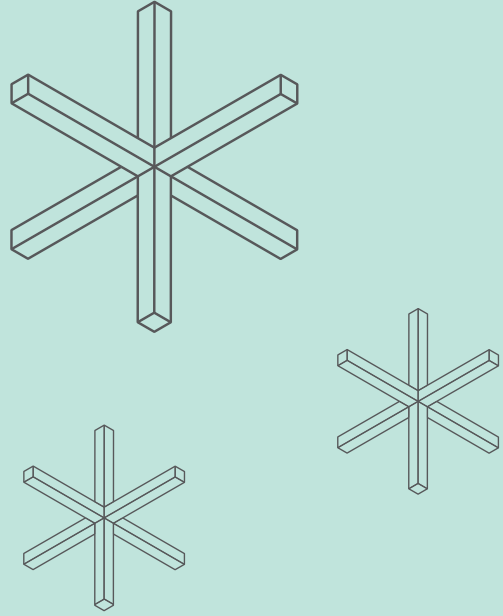
03	Yatas 2018
23	Parsian Pishro Sanat 2018
43	Pakshoma 2018
65	FujiTech 2018



Two areas to lean into are collaboration and connection. Our survey results revealed that employees think some work is better suited for a collaborative environment. We asked what influences their decision to go into the workplace. The top factors include:

- What they need to get done for work
- Who else plans to be at the workplace that day

To encourage collaboration, create best practices on using shared spaces. This could include making policies around reserving conference rooms and other collaborative spaces. Don't forget the folks working from home. Leverage workplace technology to optimize engagement between remote and on-site employees.

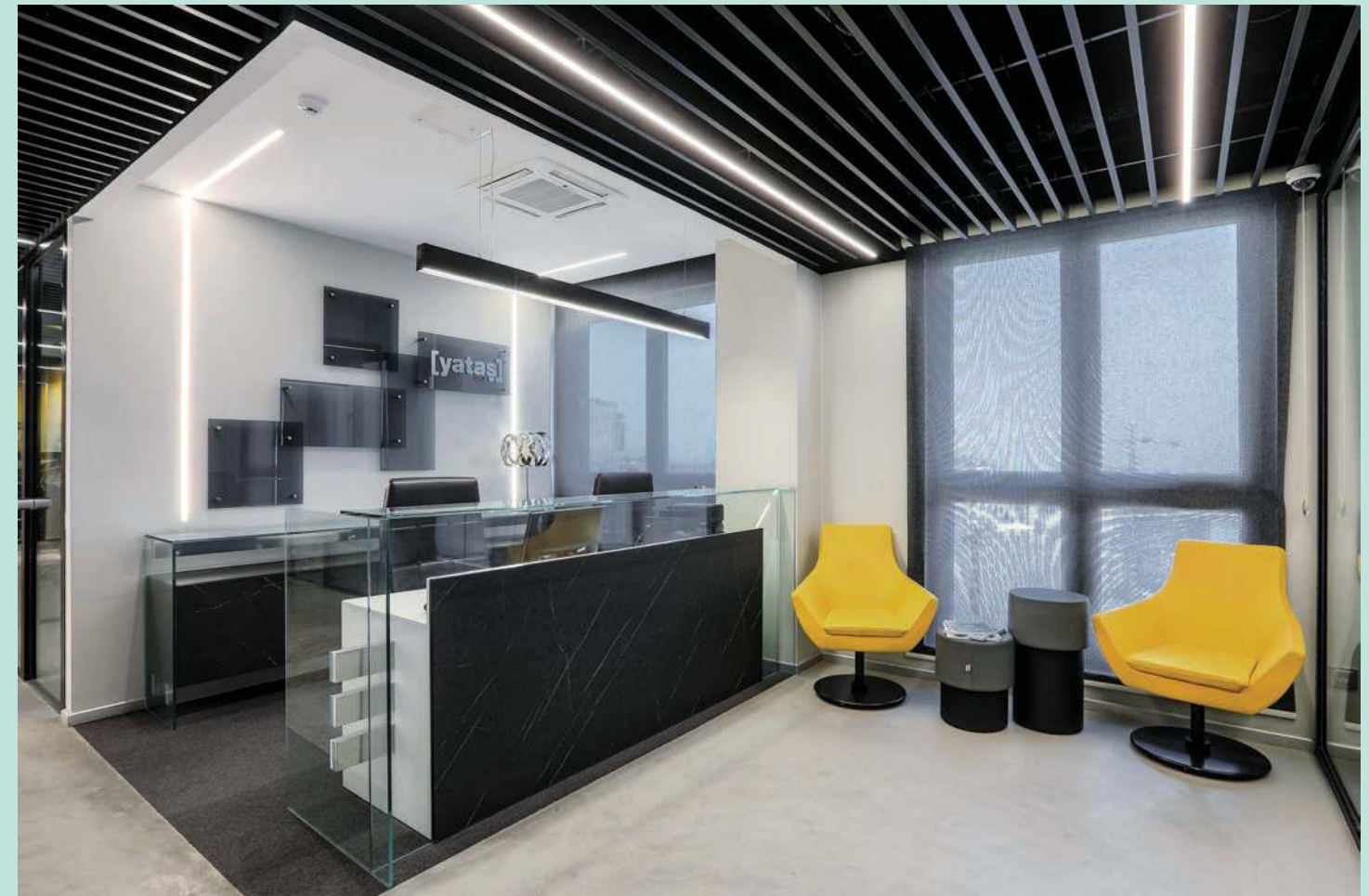


[yatas][®]
GRUP

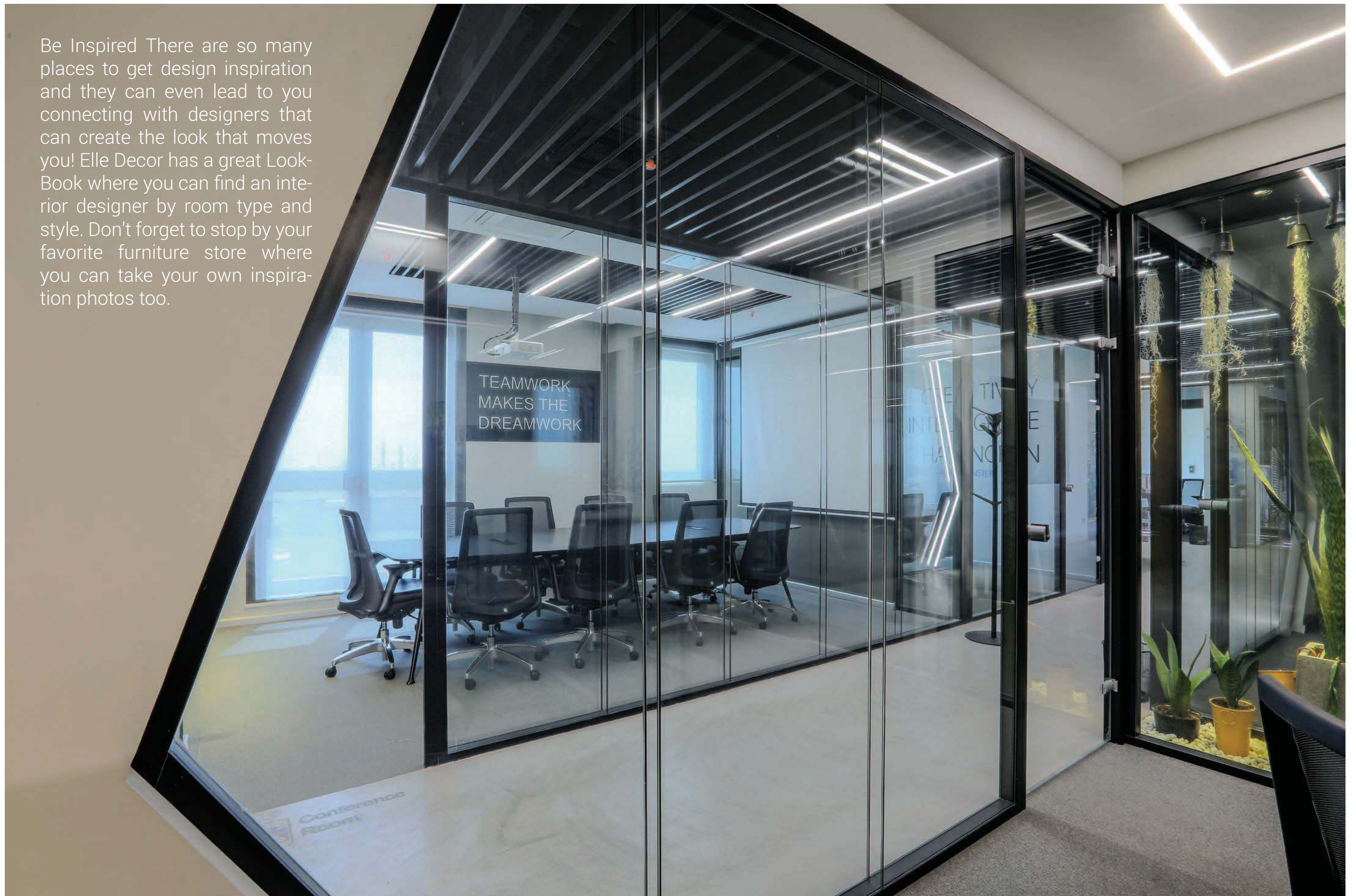
Yatas Project 2018

The Paadiran team has always measured itself by modern European standards and strives to provide services at a higher level.

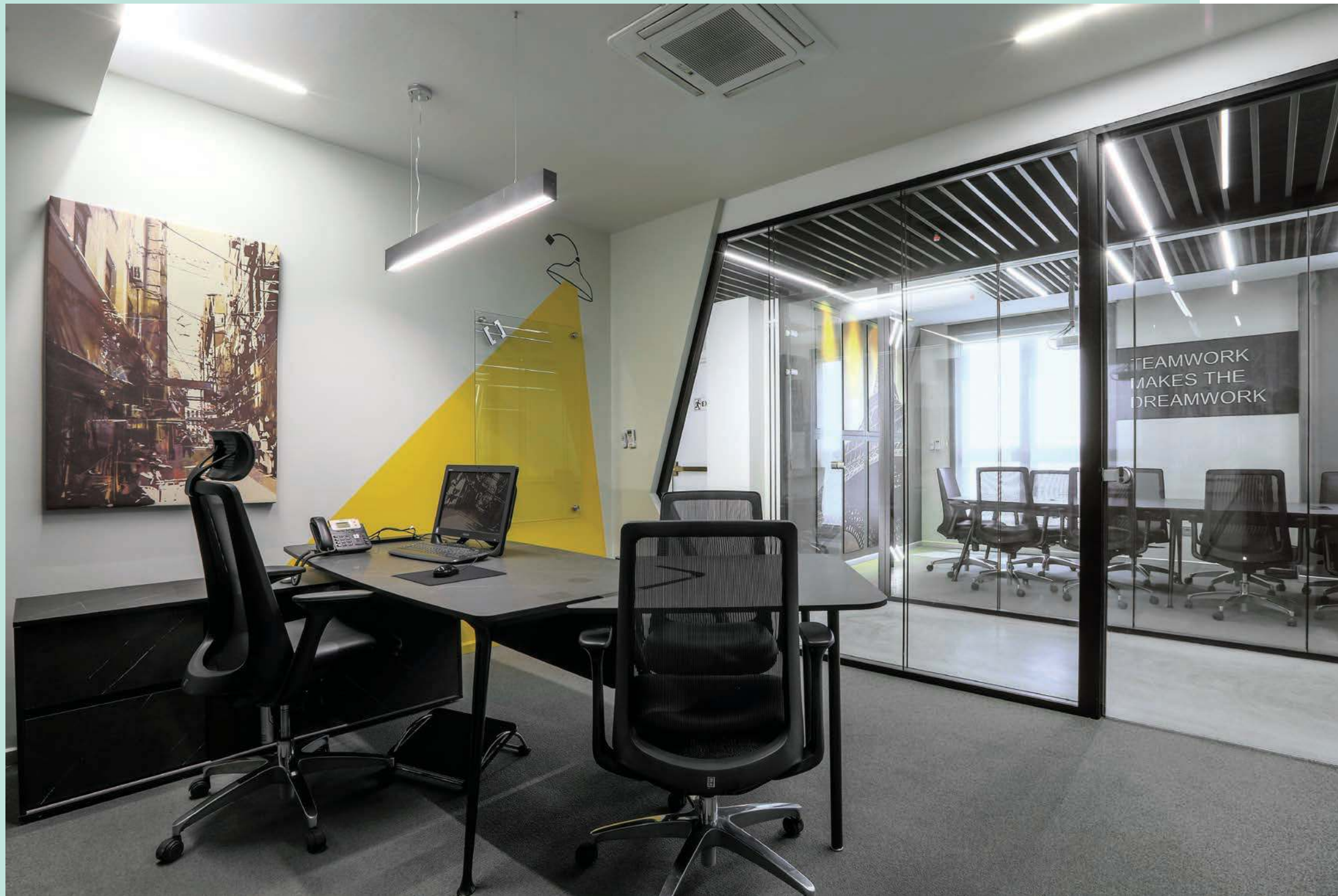
In the project of equipping the office of Air Yatash Kish, which represents Yatash Turkey in the field of residential furniture, the main challenge was the expectation that the customers has from the company's office. Certainly, the work space of a company that works in the field of interior decoration can be a very good criterion for measuring the quality and knowledge of that company. The use of partitions with angled lines next to workstation, manager executive desk with special bases has been able to provide a modern and different structure for the employees' work environment. Also, the correct use of Biophilic architectural elements in space and environmental graphics has shown the company's expertise in the field of interior architecture.



Be Inspired There are so many places to get design inspiration and they can even lead to you connecting with designers that can create the look that moves you! Elle Decor has a great Look-Book where you can find an interior designer by room type and style. Don't forget to stop by your favorite furniture store where you can take your own inspiration photos too.



Manager Desk

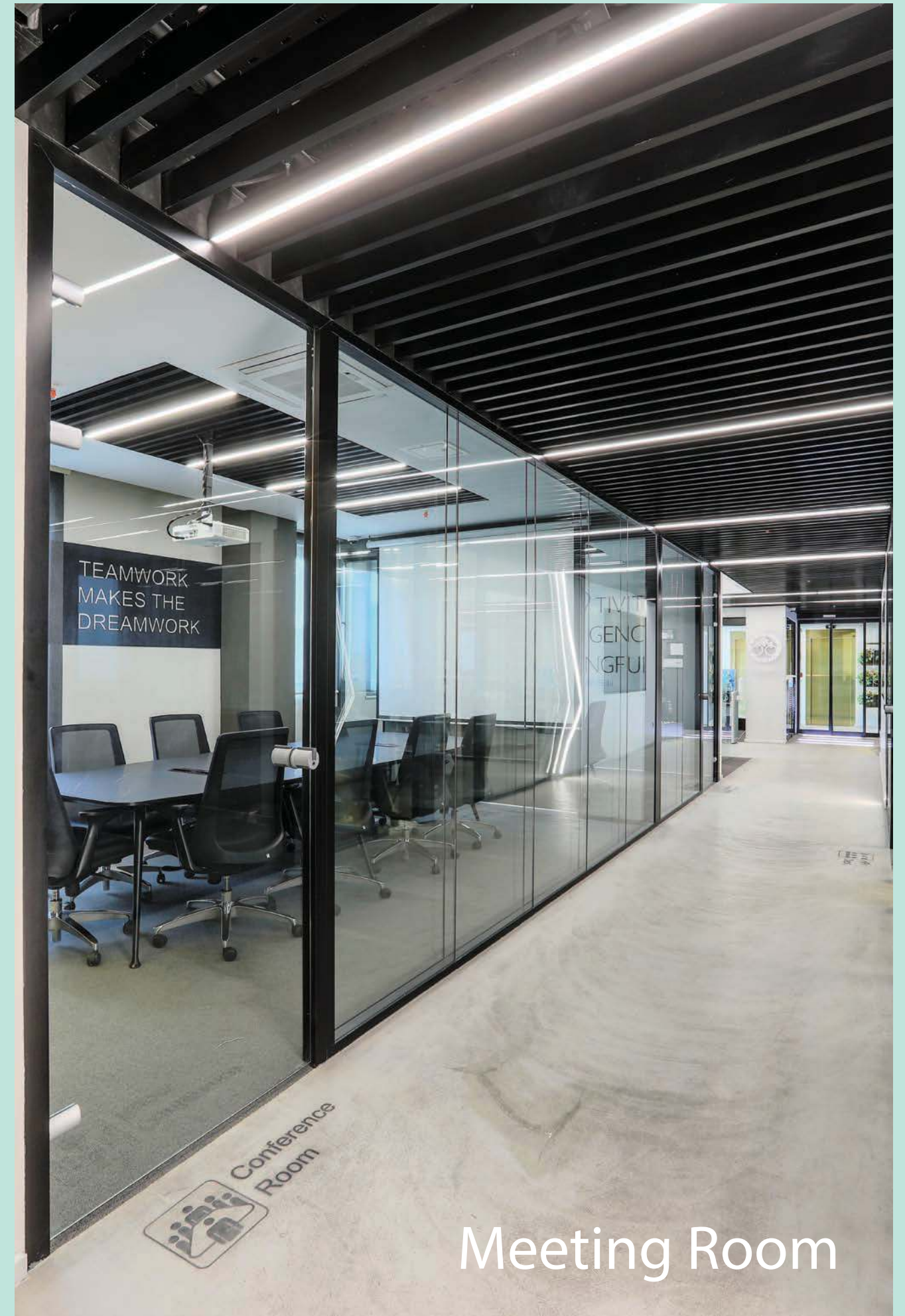


Offices would need to have systems that can provide fresh air at 50 per cent higher rates than the existing minimum standards. This would enable an 'increased ventilation rate to be used during a period when infection rates are raised, such as in a future pandemic'."

The proposal would also require ventilation systems to prevent air circulating between different areas unless filtering technology is in place.



The essence of interior design will always be about people and how they live. It is about the realities of what makes for an attractive, civilized, meaningful environment, not about fashion or what's in or what's out."



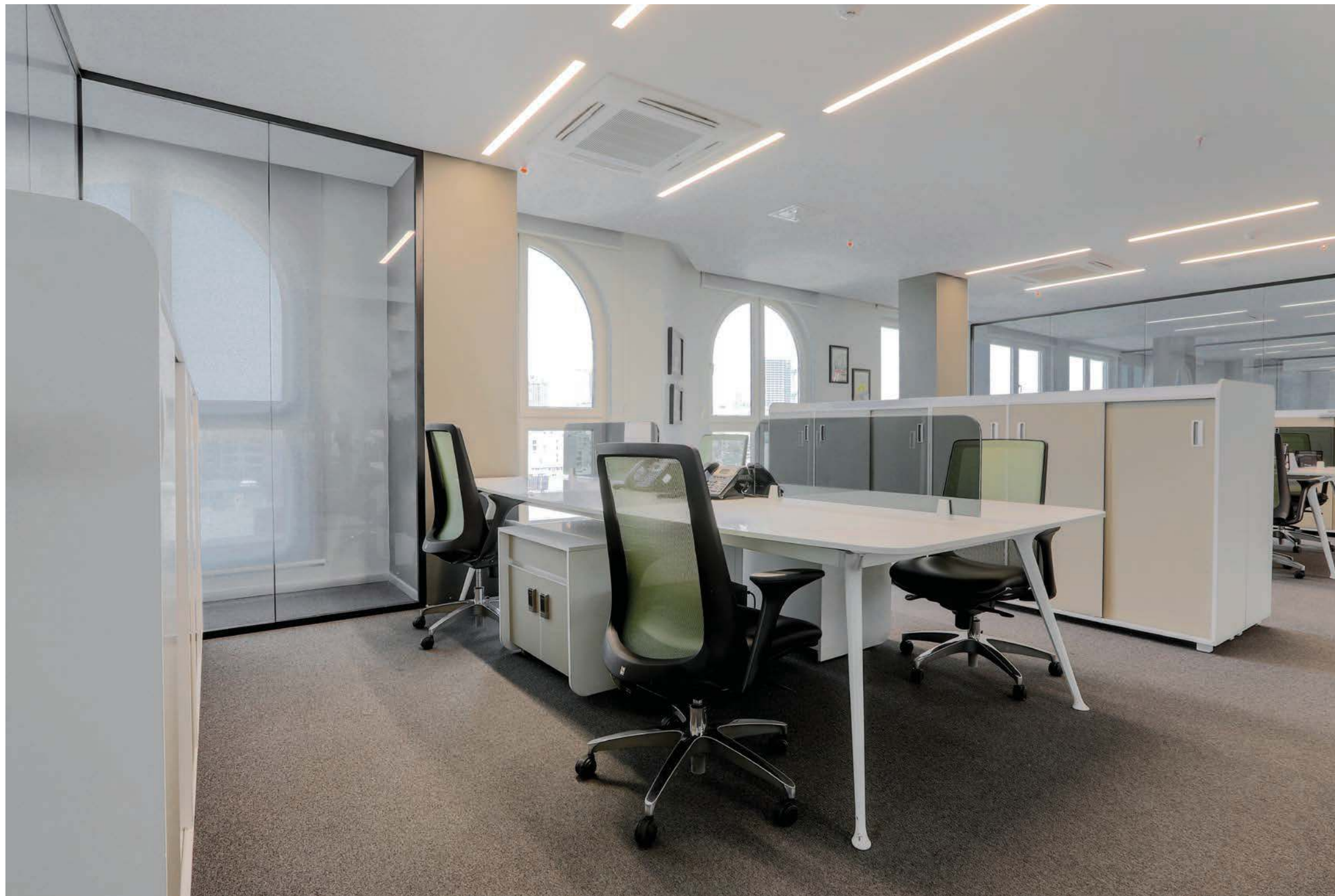
Meeting Room

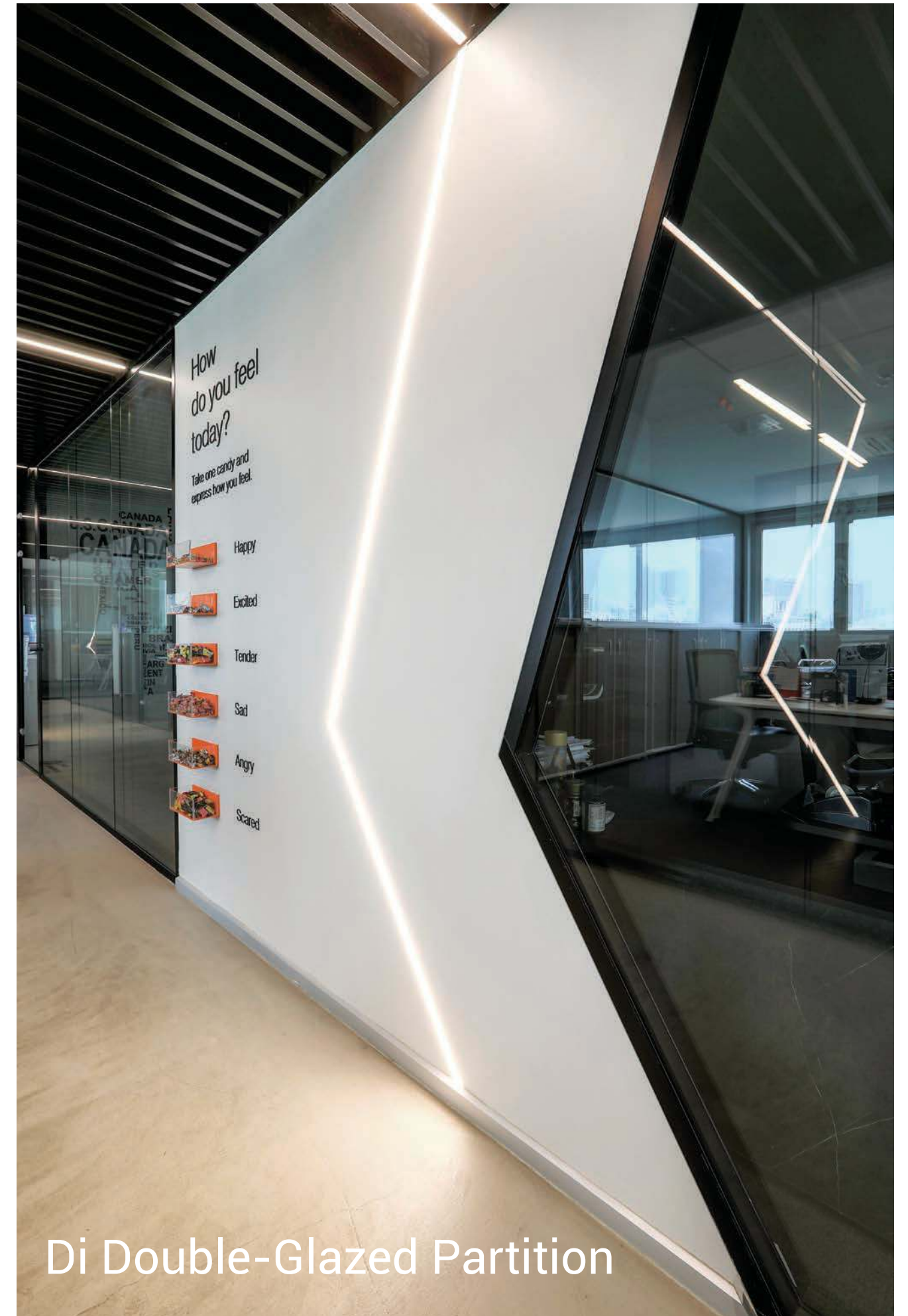
Workstation



Workstation

Reduce, reuse and recycle are not new concepts. In fact, they are the guiding principles for third-party sustainability certifications, like LEED, and can be applied to workplaces of the future to meet new, more challenging goals that will help alleviate the effects of climate change. By consistently integrating these core concepts into each step of the design process, from concept to occupancy, we can create more resilient, sustainable workplaces.



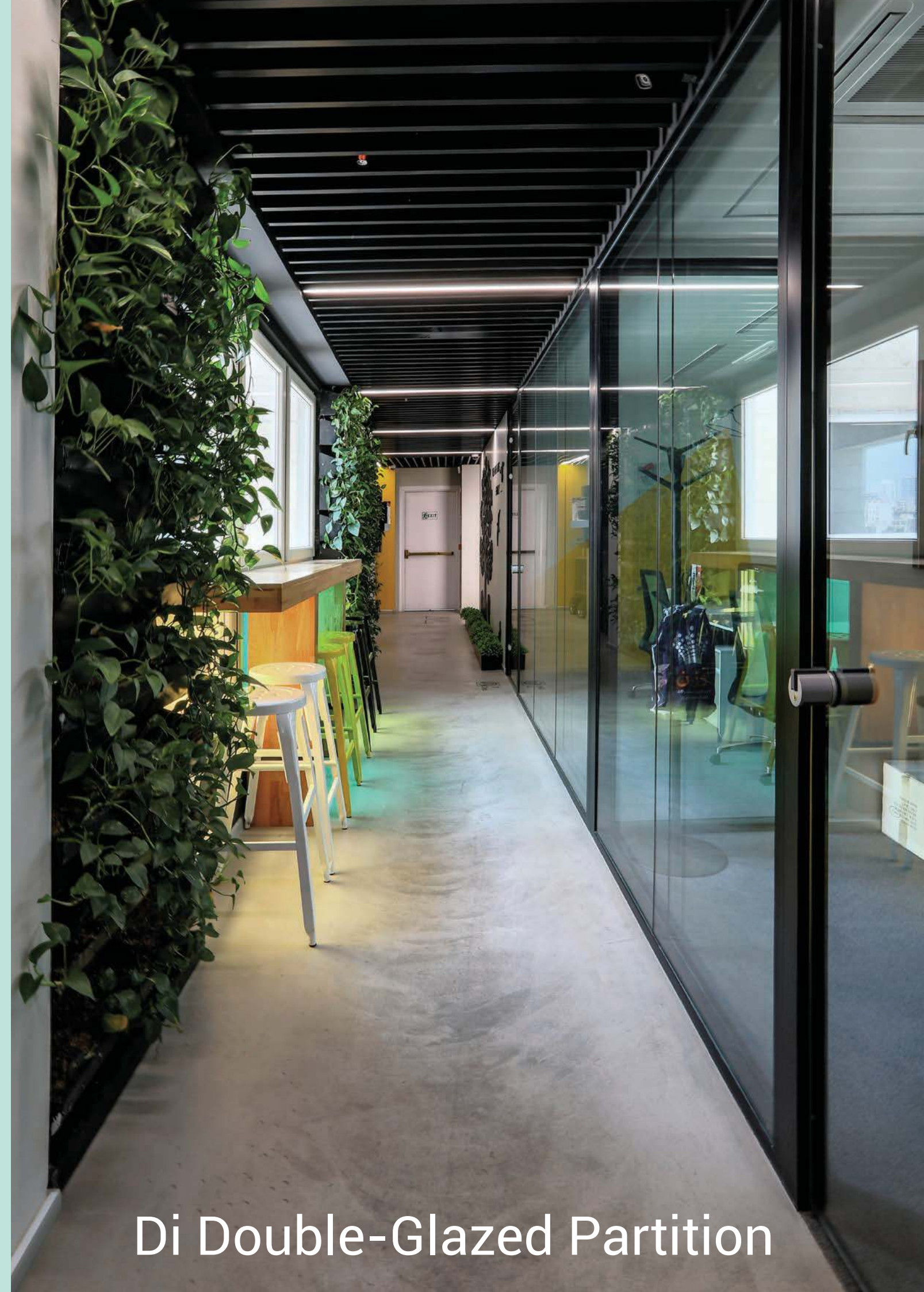


When selecting materials and interior finishes, it is important to consider the energy required for their production and transportation. Durability and longevity of materials and products are also critical factors. Moreover, opting for timeless palettes of materials and color can help eliminate the need for frequent replacement when trends go out style. Given the quantity of offices and numerous leases with varying terms, specifying materials with low impact can have a positive effect on reducing embodied energy across the board.



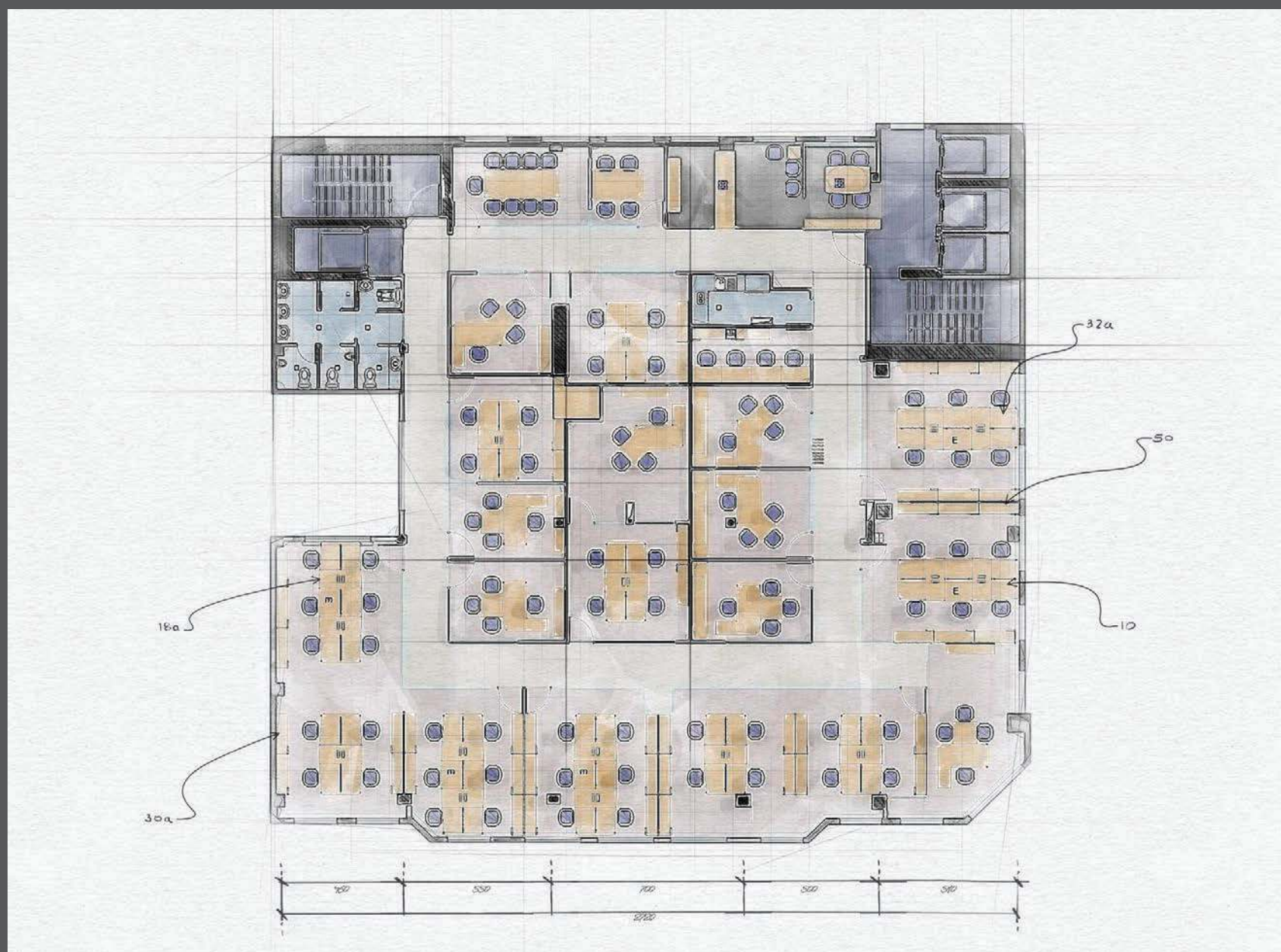
There's a lot at stake for companies that don't offer flexible work options. Nearly half of people surveyed said they'd look for a new job if their employer didn't offer hybrid work.

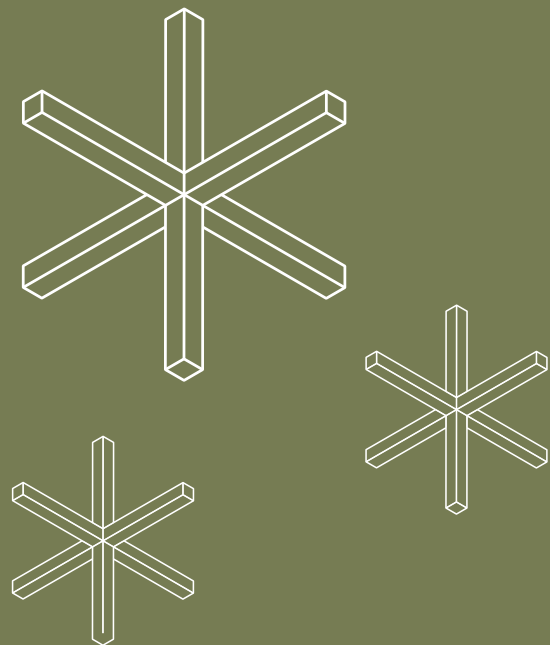
For many employees, hybrid work is a requirement, not a nice-to-have. Employees may prove this in several ways. Turnover will be the most obvious and have the biggest impact on the company. But employers shouldn't overlook the risks to employee engagement, productivity, and overall satisfaction.



Di Double-Glazed Partition

Yatas Project Plan





Parsian Pishro Sanat Project 2018



گروه صنعتی پیشرو

تولید کننده انواع قالب و قطعات پلیمری خودرو

Manufacturer of automotive molds and polymer parts
The company had a large industrial building located in the west of Tehran, which was designed by a famous architect. In this project, due to the large number of employer staff, we sought to make maximum use of space and the use of bright colors and glass partitions to give people the feeling of being in an open, large and bright space in all parts of the company.

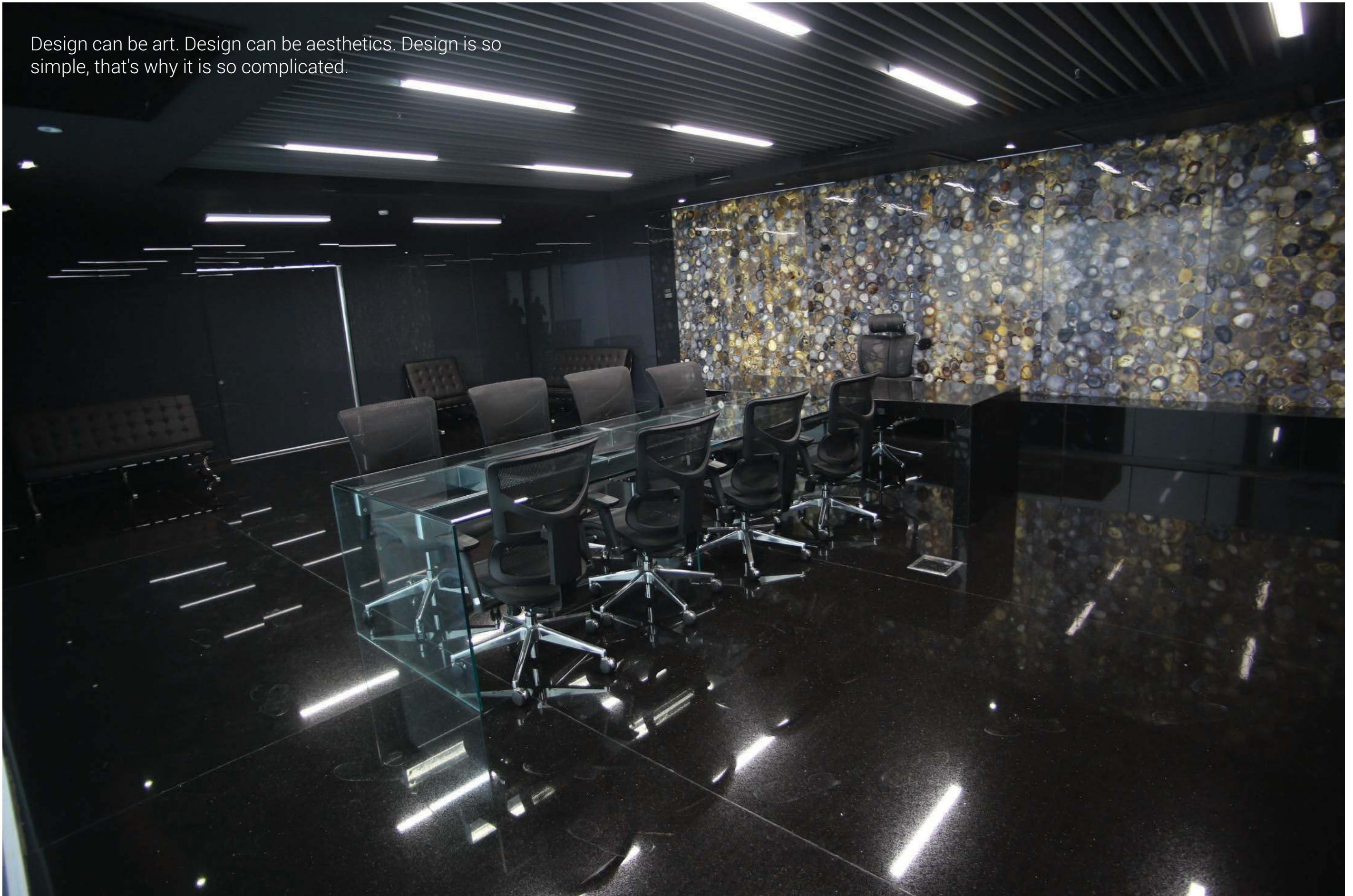


Alireza Taghaboni
Architect

Alireza Taghabani (born in 1977) is an Iranian architect. Taghabeni graduated from the University of Guilan in 2002 and then continued his doctoral studies at the Islamic Azad University, Tehran Research Sciences Branch. He is the winner of four Architect Award and the first Academy Award of the Dorfman Royal Academy.

Executive Set

Design can be art. Design can be aesthetics. Design is so simple, that's why it is so complicated.





Flooring, and in particular carpet, has high embodied carbon content. Some manufacturers in the industry are taking the lead with their commitments to zero emissions, thus making the case for prioritizing their products in workplace design. For example, solution-dyed carpet tile features fade-resistant yarns that do not require as much energy to produce, compared to piece- or yarn-dyed.

Personal space is often closely correlated to an employee's ability to personalize that space. As companies shift to a distributed workforce being more of the norm, employees need to shift their thinking from identifying with "Me Space" to identifying with a neighborhood, zone, area, or community. That's what we think of as "We Space."

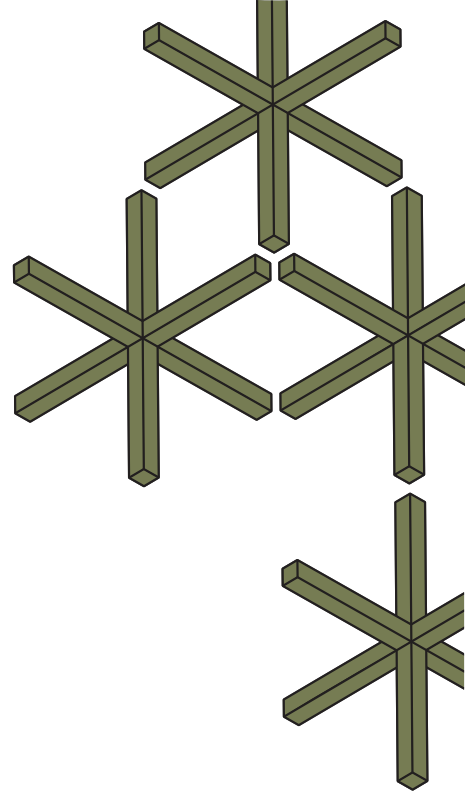


Workstation



Certainly, there is much to consider within this new world of work. For many organizations, understanding how physical offices and post-pandemic space needs fit into the picture are becoming mounting priorities. Remote work has ignited an honest and in-depth exploration into the role of physical office spaces, the level of flexibility that employees expect from their employers, and what companies are willing to embrace moving forward. And this is just the beginning of a widespread paradigm shift in work styles and modalities across industries, including architecture and design.

An intentional office design can aid in providing a soothing, comforting experience for those returning to in-person work. Showcasing artwork that evokes calming sensations or gives employees a sense of place can help ease the transition. In fact, 92 percent of people say art installations elicit positive feedback.



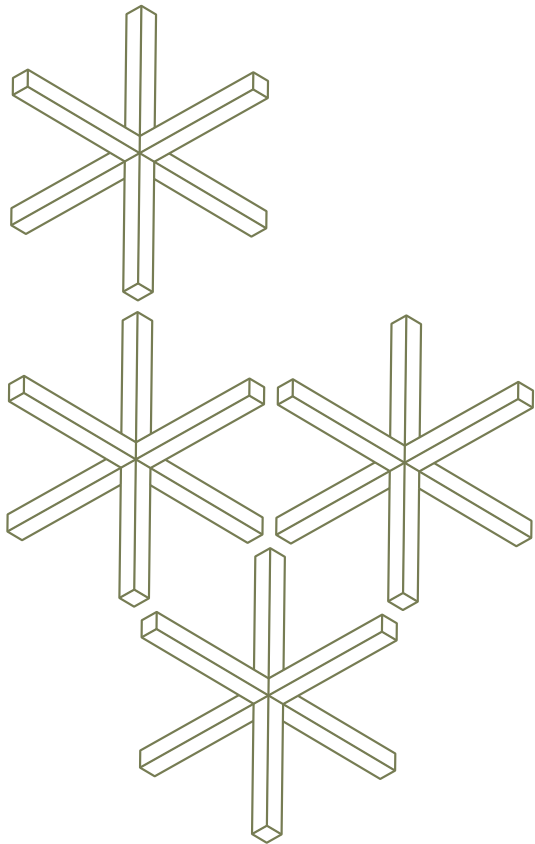
Executive Set



Conference Desk

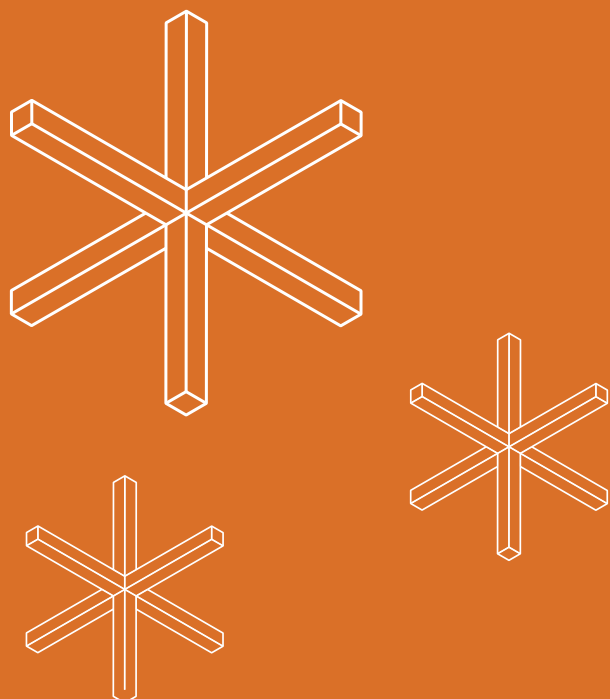
The public is more familiar with bad design than good design. It is, in effect, conditioned to prefer bad design, because that is what it lives with. The new becomes threatening, the old reassuring.

An emerging trend in the art world is the use of big art. And, this couldn't be more perfect for the state our world is in right now — social distance friendly. Too often, people think of art as a thing to hang on the wall. But art can be anything and go anywhere. From interior walls, to parking garages to entire sides of a building, large scale artwork creates an experience you have to see to believe.





Lorem ipsum dolor sit amet, consectetur adipiscing elit, sed diam nonummy nibh euismod tincidunt ut laoreet dolore magna aliquam erat volutpat. Ut wisi enim ad minim veniam, quis nostrud exerci tation ullamcorper suscipit lobortis nisl ut aliquip ex ea commodo consequat. Duis autem vel eum iriure dolor in hendrerit in vulputate velit esse molestie consequat, vel illum dolore eu feugiat nulla facilisis at vero eros et accumsan et iusto odio dignissim qui blandit praesent luptatum zzril delenit augue dui dolore te feugait nulla facilisi.



Pakshoma Project 2018



Scan Me
Movie About
Paadiran Showroom

Pakshoma Production Company built a central building in the center of Tehran to focus on work and affairs related to parts of the company. In this project, we dealt with different departments such as marketing, after-sales service, customer affairs, etc., and the work requirements for each unit had to be observed in the main branding framework of Pakshoma collection.



Workstation

While many will shift back to in-office work, businesses can not overlook the growing trend of remote working expedited by the pandemic. Finding ways to still incorporate artwork into your work-from-home employees' day-to-day is essential.



Executive Set

How can the design of the workplace promote belonging? More than ever, it is important to cultivate human connection in all of our experiences, whether they occur in a virtual or physical setting. As we help our clients prepare for the future, we are focused on design strategies to bring people together, foster inclusion, and build a sense of community.



Meeting Room

People are looking for that connection to the natural environment in the smallest and easiest ways. There is an opportunity for the workplace to become a space where people can once again connect. By incorporating safe distancing spaces filled with aspects of nature, the office can become a peaceful escape for employees and provide access to the needed natural elements many have lacked in their personal homes. The pandemic has caused everyone to rethink the elements of their day and office that they once took for granted.





Workstation + Decorative Partition

Compare Visual Proposals Design is visual. Having proposals from different designers makes the decision easier and bases it on a designer's vision for the space. Decorilla is one interior design service that offers clients multiple design concepts. Through visual proposals you can feel confident in receiving the results you see.



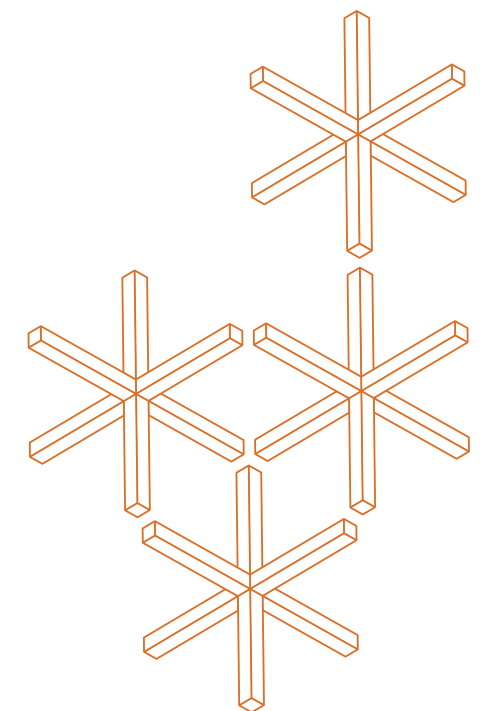


Slim Double-Glazed Partition

Currently, the Slim double-walled partition, as its name implies (Slim means narrow), is the narrowest structure of the double-walled partition and is a very suitable option for places that need a narrow partition in two layers of glass for more comfort.

Executive Set

Our new norm of “work from anywhere” is better described as “I want the choice to work in an environment where I can be most productive and at my best.” It’s about creating a unique human experience in the workplace. For many years, that meant a dedicated workstation or office with family photos, personal touches, and allowing employees to make their spaces feel comfortable.





Acoustics will be a factor in designing outdoor offices. Planes flying overhead, wind, and construction noise in cities could interfere with meetings. Though for some individuals, these sounds could be the perfect white noise background for completing their heads-down focus tasks.

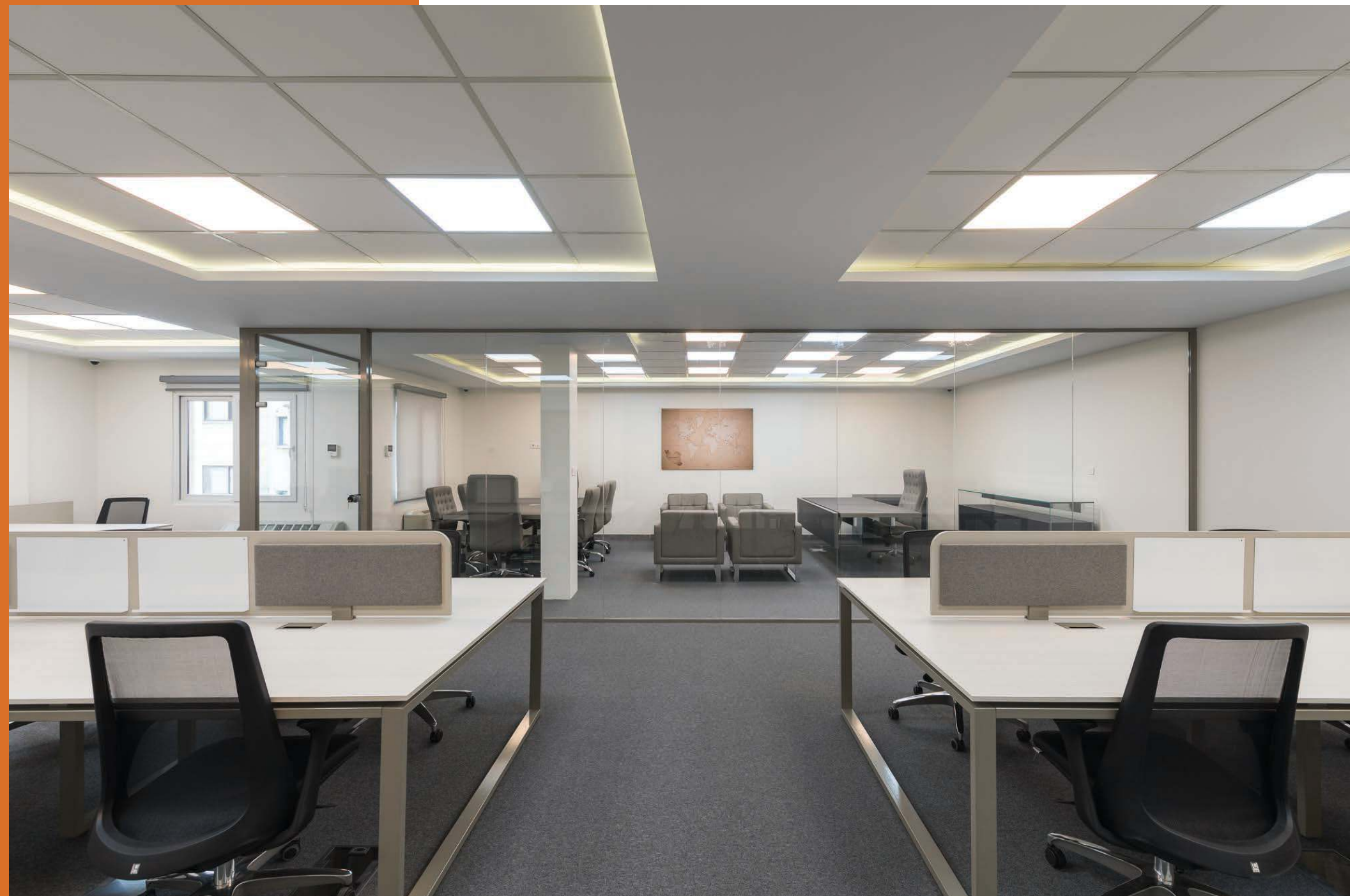
Counter



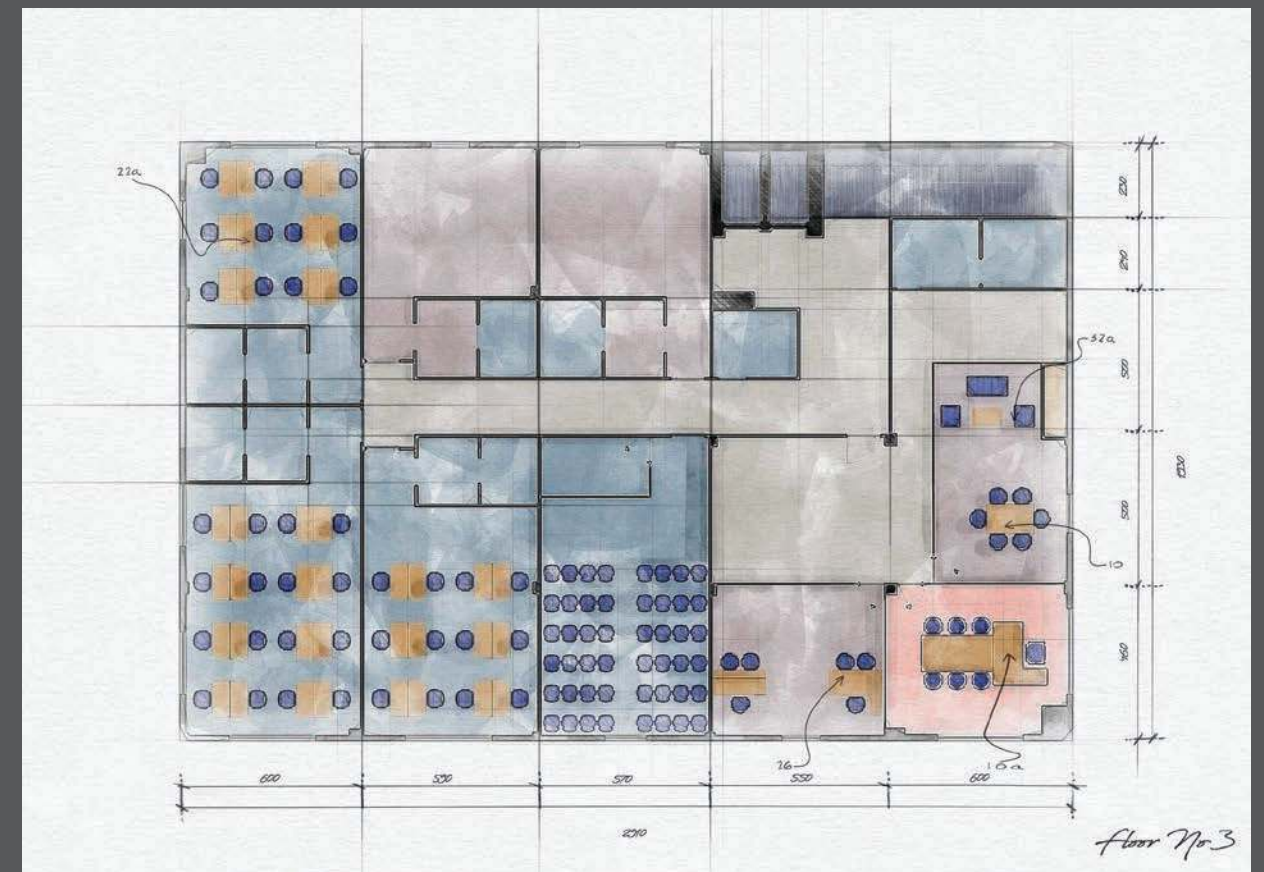
Lorem ipsum dolor sit amet, consectetur adipiscing elit, sed diam nonummy nibh euismod tincidunt ut laoreet dolore magna aliquam erat volutpat. Ut wisi enim ad minim veniam, quis nostrud exerci tation ullamcorper suscipit lobortis nisl ut aliquip ex ea commodo consequat.

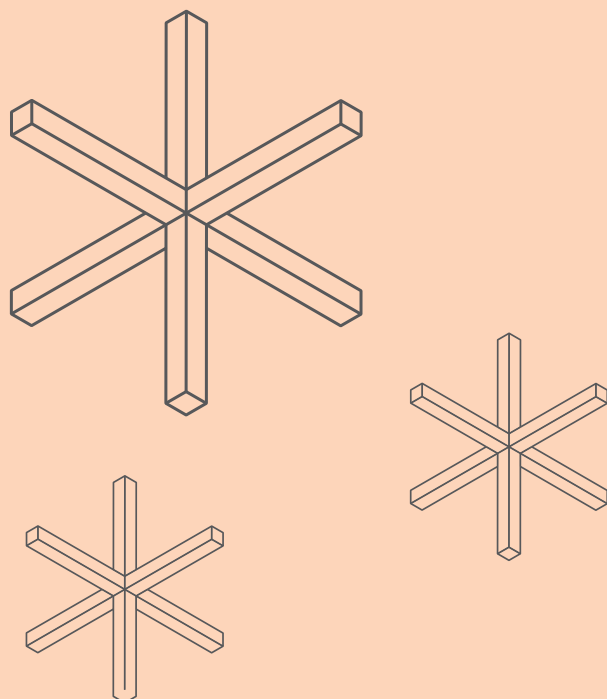
Workstation Detail

Lorem ipsum dolor sit amet, consectetur adipiscing elit, sed diam nonummy nibh euismod tincidunt ut laoreet dolore magna aliquam erat volutpat. Ut wisi enim ad minim veniam, quis nostrud exerci tation ullamcorper suscipit lobortis nisl ut aliquip ex ea commodo consequat.



A hand-drawn floor plan of a restaurant layout. The plan is divided into several zones: a red zone (top left), a purple zone (top right), a blue zone (bottom left), and a grey zone (bottom right). The red zone contains a large L-shaped table labeled '48' and several blue chairs. The purple zone contains two small square tables labeled '16a' and blue chairs. The blue zone contains several small square tables labeled '18a' and '30a' and blue chairs. The grey zone contains a long rectangular table and blue chairs. The plan includes dimensions: 610 (width of the red and blue zones), 1220 (total width), 300 (height of the red zone), 200 (height of the purple zone), 530 (height of the blue and grey zones), and 1250 (total height). A 'Storage' area is indicated at the bottom right.





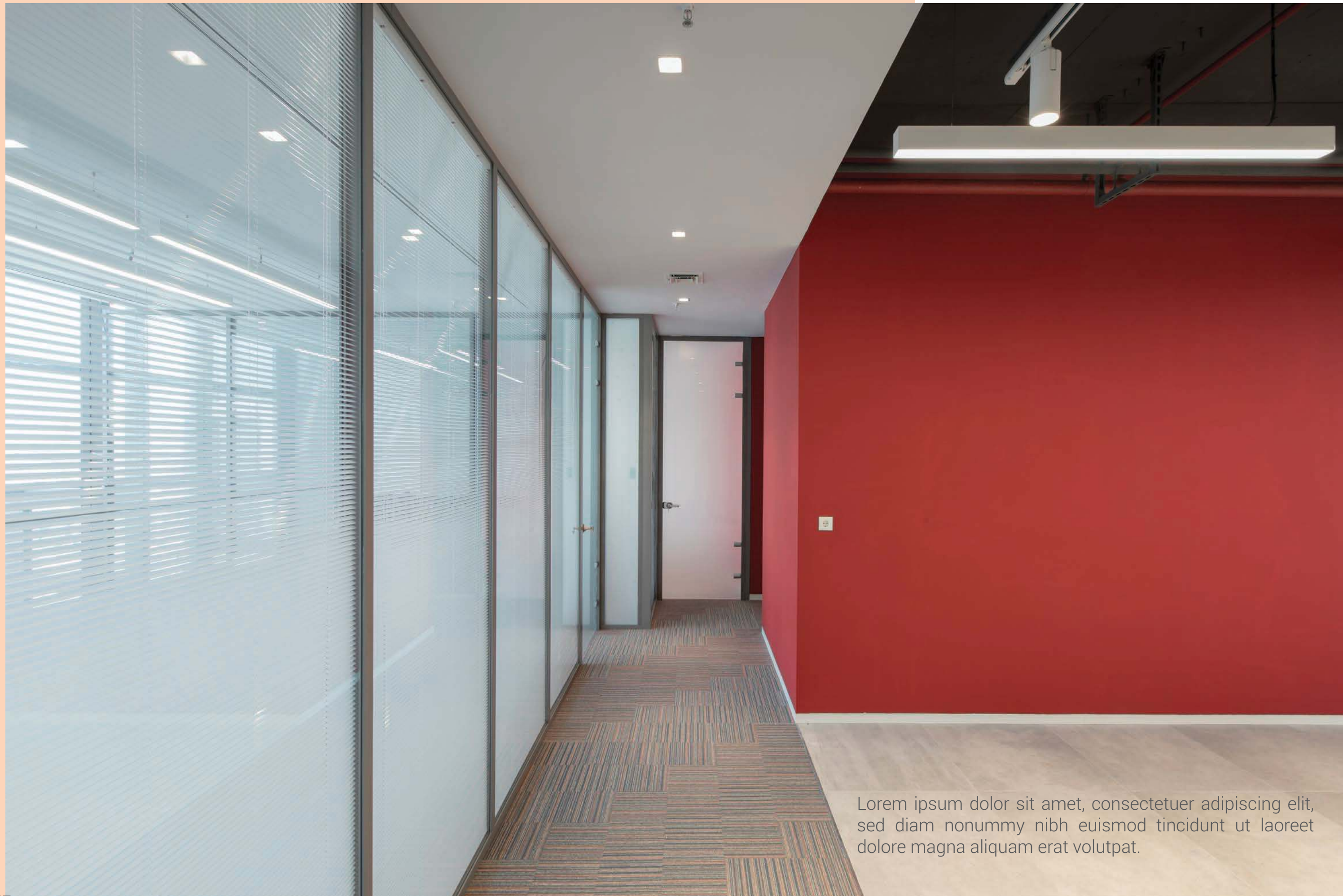
FUJITEC

FujiTec Project 2018



Scan Me
Movie About
Paadiran Showroom

Fuji Tech Company, which is one of the largest construction companies in Iran in the field of elevator equipment and lifting systems, has entrusted us with the task of equipping its head office. In this project, we had to use the lights installed on the exposed roof of the building and the unchangeable part of the building architecture simultaneously with the customer's wishes. Red as the organizational and key color of the company had to be used everywhere correctly.



Lorem ipsum dolor sit amet, consectetur adipiscing elit, sed diam nonummy nibh euismod tincidunt ut laoreet dolore magna aliquam erat volutpat.

Manager Desk

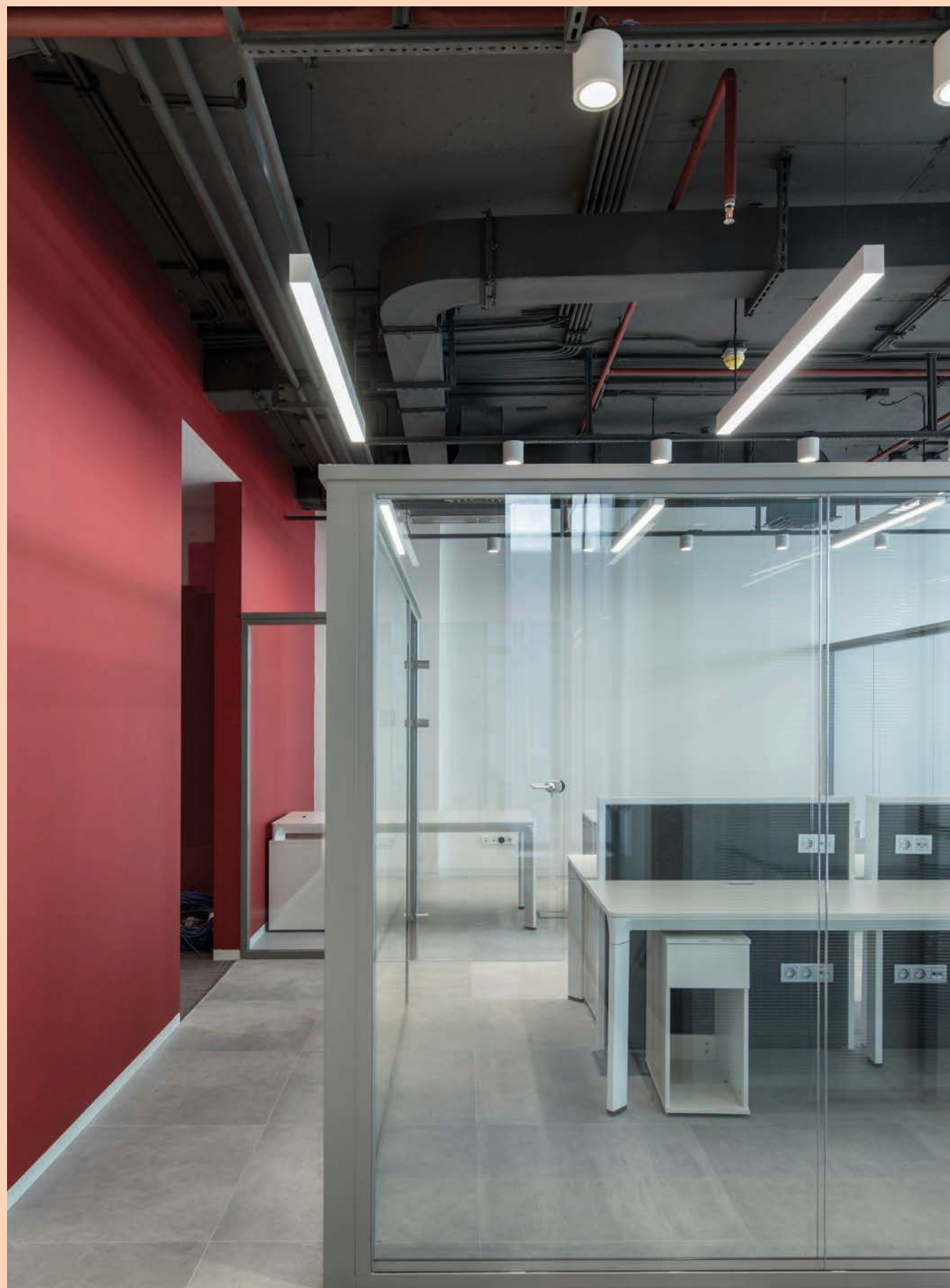
Flexibility in the workplace is here to stay, driven by research and surveys that increasingly show top recruits consider flexibility to be a priority, and link it to employee engagement and productivity. A 2019 survey from Boulder, Colorado-based FlexJobs indicated that 80 percent of the 7,300 responding workers would be more loyal to employers who offered flexible work options – trending upward from the 75 percent in the 2018 survey who said the same – suggesting that flexibility is increasingly important to retention prospects as well.





Every great design begins with an even better story

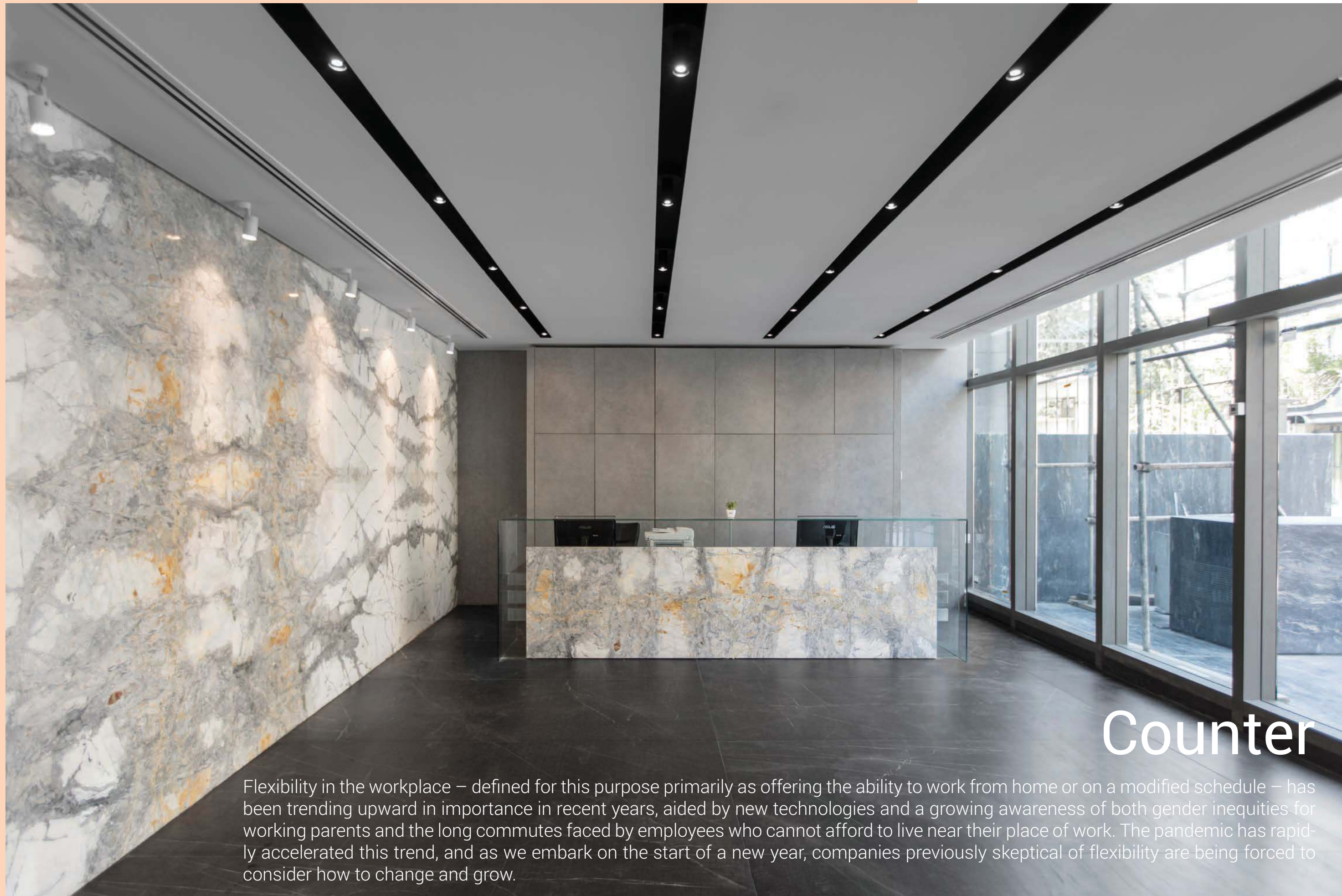




Short Double-Glazed Partition



The more I deal with the work as something that is my own, as something that is personal, the more successful it is.



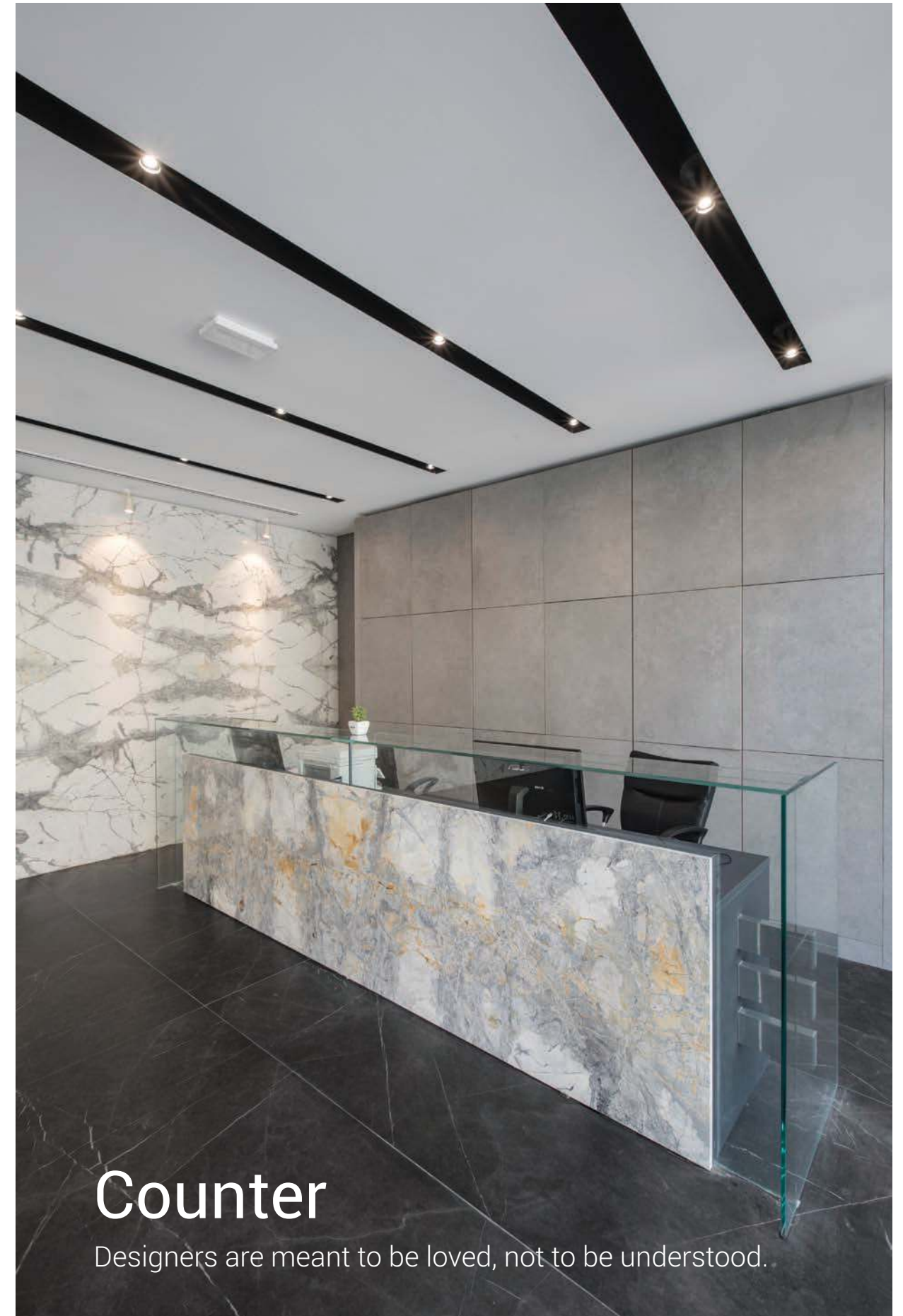
Counter

Flexibility in the workplace – defined for this purpose primarily as offering the ability to work from home or on a modified schedule – has been trending upward in importance in recent years, aided by new technologies and a growing awareness of both gender inequities for working parents and the long commutes faced by employees who cannot afford to live near their place of work. The pandemic has rapidly accelerated this trend, and as we embark on the start of a new year, companies previously skeptical of flexibility are being forced to consider how to change and grow.



Conference Desk

Lorem ipsum dolor sit amet, consectetur adipiscing elit, sed diam nonummy nibh euismod tincidunt ut laoreet dolore magna aliquam erat volutpat. Ut wisi enim ad minim veniam, quis nostrud exerci tation ullamcorper suscipit lobortis nisl ut aliquip ex ea commodo consequat.



Counter

Designers are meant to be loved, not to be understood.

