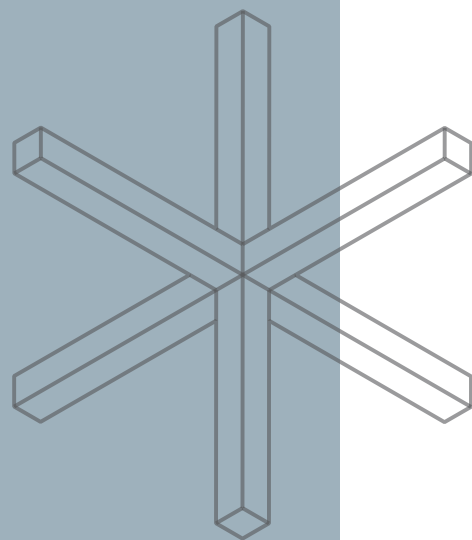




Projects 2020



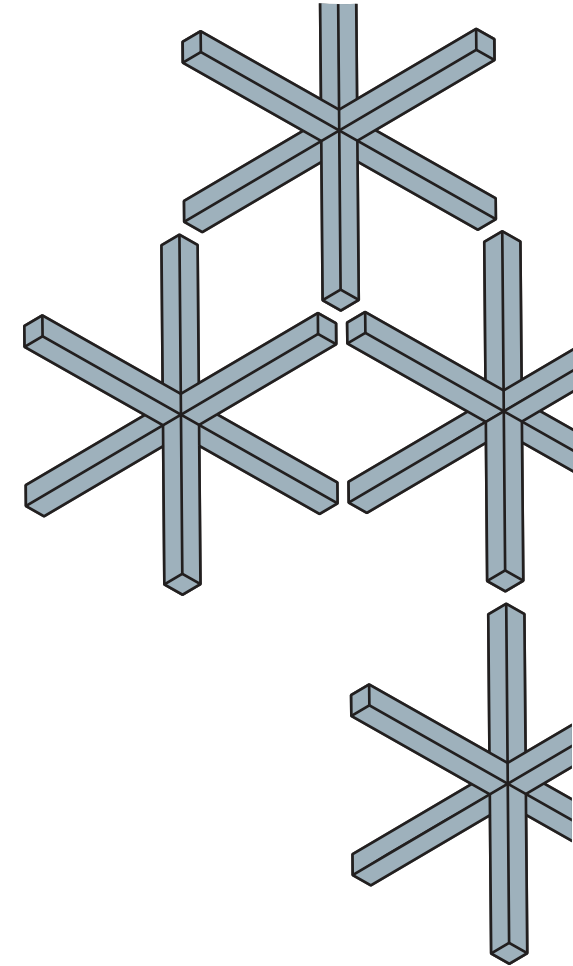
paadiran
since 1974

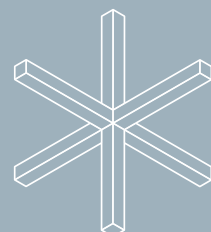
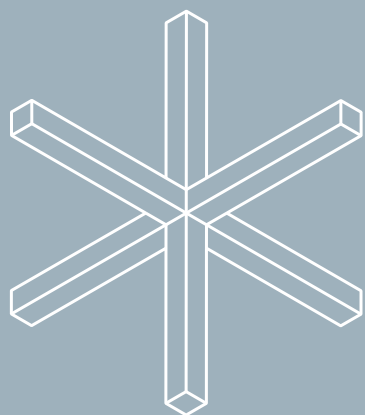


Scan Me
Movie About
Paadiran Showroom

- 03 Karafarin Bank
- 21 Lordegan Petrochemical
- 37 Mesbare Kave
- 57 Nahayatgar Stock Exchange
- 71 Sun Star

Designers have a lot of things to consider already: aesthetics, light, cost, availability, durability, and maintenance. The human health impacts of our choices should be among these top considerations. Most people assume if it's on the market, it's safe and tested. This is simply not true, since chemicals in building materials are mostly unregulated and untested by the government, and it is left up to manufacturers to disclose potential harm.





بانک کارآفرین



Scan Me
Movie About
Paadiran Showroom

Karafarin Bank Project 2020

Office furniture design and production of one of the central buildings of Karafarin bank project in 2020, was one of the projects of Paadiran office interior decoration consulting company.

In equipping this building and implementing this project, the employer sought to properly use the combination of open and shared workspaces along with private workspaces.

This project included many details for the designers of Paadiran office interior decoration consulting company, some of which are:

- Use simple and extensive forms in product design
- Use bright colors and materials such as glass
- Use of combined lighting and the possibility of using natural and artificial light at the same time
- Design and location of numerous cabinets for archiving financial and administrative documents
- Use controlled colors with a formal theme
- Using matte stickers on glass with dual-use to create a private space that can be used as a whiteboard simultaneously
- Use of environmental graphics
- Installing electrical access on the table surface to avoid extra wiring, etc. were part of the details implemented in this project.

This project was completed on 6 separate floors at the end of 2020.

Workstation

Your furniture provider should offer strong visual packages to help you process the larger impact of the design on any office retrofit.



Partition + Door



Our environment and its visual appeal greatly impact productivity. We are challenged to react to the new safety guidelines, but it does not need to be at the expense of design. Design can be the bridge between creating a safe and stimulating environment.

Executive Set



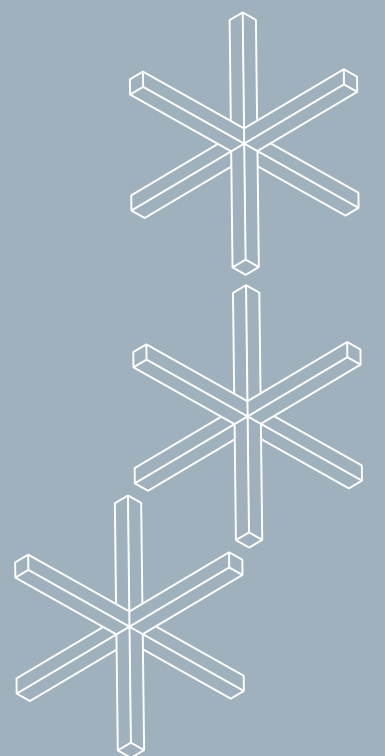
Human Comfort Models can be created to help determine the best means of designing spaces based on local conditions, and landscaping can be designed to manage some of the environmental challenges. Access to technology can be more of a challenge because it requires infrastructure that is traditionally stored indoors and has been designed to serve specific building zones. Diverse types of meeting settings can be explored to better suit outdoor work in the same way breakout spaces and conference rooms have evolved for interior settings.



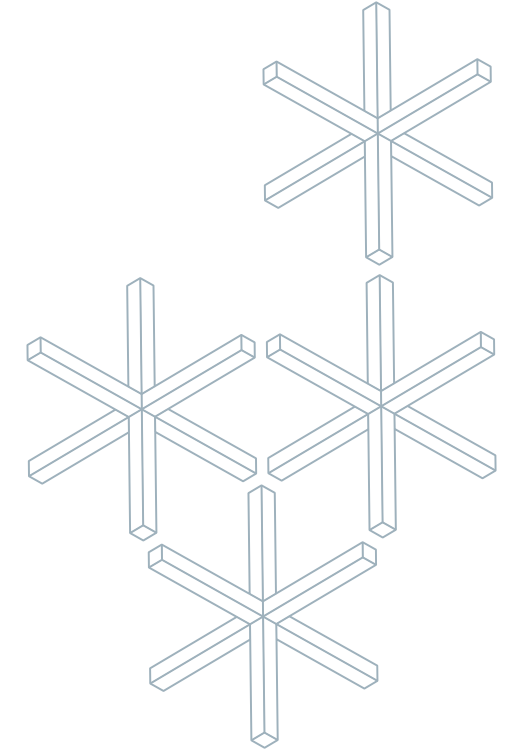
Single-Glazed Partition



Recent research confirms that what people really want is form and function. And, they begin to suggest a formula for designing casual, shared spaces where people actually want to work.



Workstation Detail



These workstation and conference table divider screens can also be customized to integrate custom colors and artwork or even be used as whiteboards. A recent survey by McKinsey and Company indicates that the majority of offices plan to change their workstations, food-service areas and other physical infrastructure to aid in the separation of employees. Nearly 50 percent of respondents' report separating workstations already, and an additional 34 percent say they plan to.



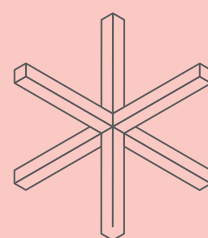
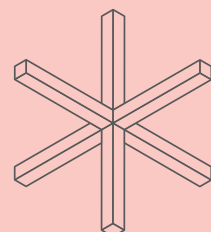
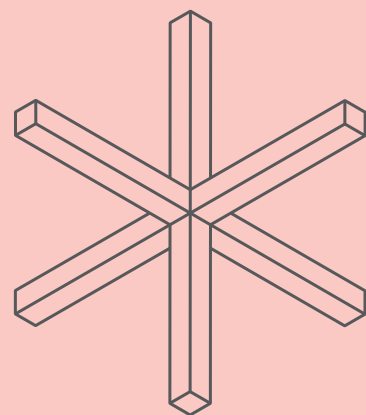
The right furniture provider will offer more than just sales. They should help navigate the maze of products and information being pushed out daily, especially as these evolve to meet post-COVID-19 restrictions and regulations. Specifically, furniture providers should be solution-oriented and cater to the individual needs of your company, while helping you consider options and costs.



To design is much more than simply to assemble, to order, or even to edit:
it is to add value and meaning, to illuminate, to simplify, to clarify, to
modify, to dignify, to dramatize, to persuade, and perhaps even to amuse.
To design is to transform prose into poetry







Lordegan Petrochemical Project 2020



Design and production of the office furniture of the head office of Lordegan Petrochemical Company, which is one of the largest complexes for the production of chemical fertilizers and urea in the country in 2020 and has been done by Paadiran, the Office Interior Decoration Consulting Company, and Work Style Provider.

In the interior design and office equipment of Lordegan Petrochemical Company, while observing the principles requested by the employer, such as the separation of working spaces based on the job descriptions of different units, we had to follow uniformity and integrity in interior design.

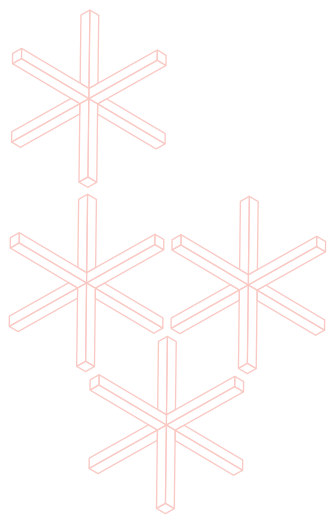
The identity and organizational structure of this petrochemical company demanded that in designing and producing office furniture and the desired product while observing the modern structure, we should avoid innovations that were different from the organizational spirit and nature of their work.

People ignore designs that ignore people





Single-Glazed Partition



The goal of a designer is to listen, observe, understand, sympathize, empathize, synthesize, and glean insights that enable him or her to 'make the invisible visible.'



Where do new ideas come from? The answer is simple: differences. Creativity comes from unlikely juxtapositions.



Workstation

Businesses expect a lot from their office spaces. They want enough room for all workers, a space flexible enough to be reconfigured as business grows, a place that is aesthetically pleasing and that enhances team member wellness and collaboration.

Unfortunately, it can be difficult to make sure a design includes all of these aspects. As a result, designers and architects still often have to leave space for cubicles and open office spaces; a big contributing factor to general noise levels.



The way most workers need to complete tasks have significantly changed the way companies use their spaces. Quiet spaces are needed for deep, focused work. Technology enabled meeting rooms and collaboration spaces are used for productive meetings.



Conference Desk

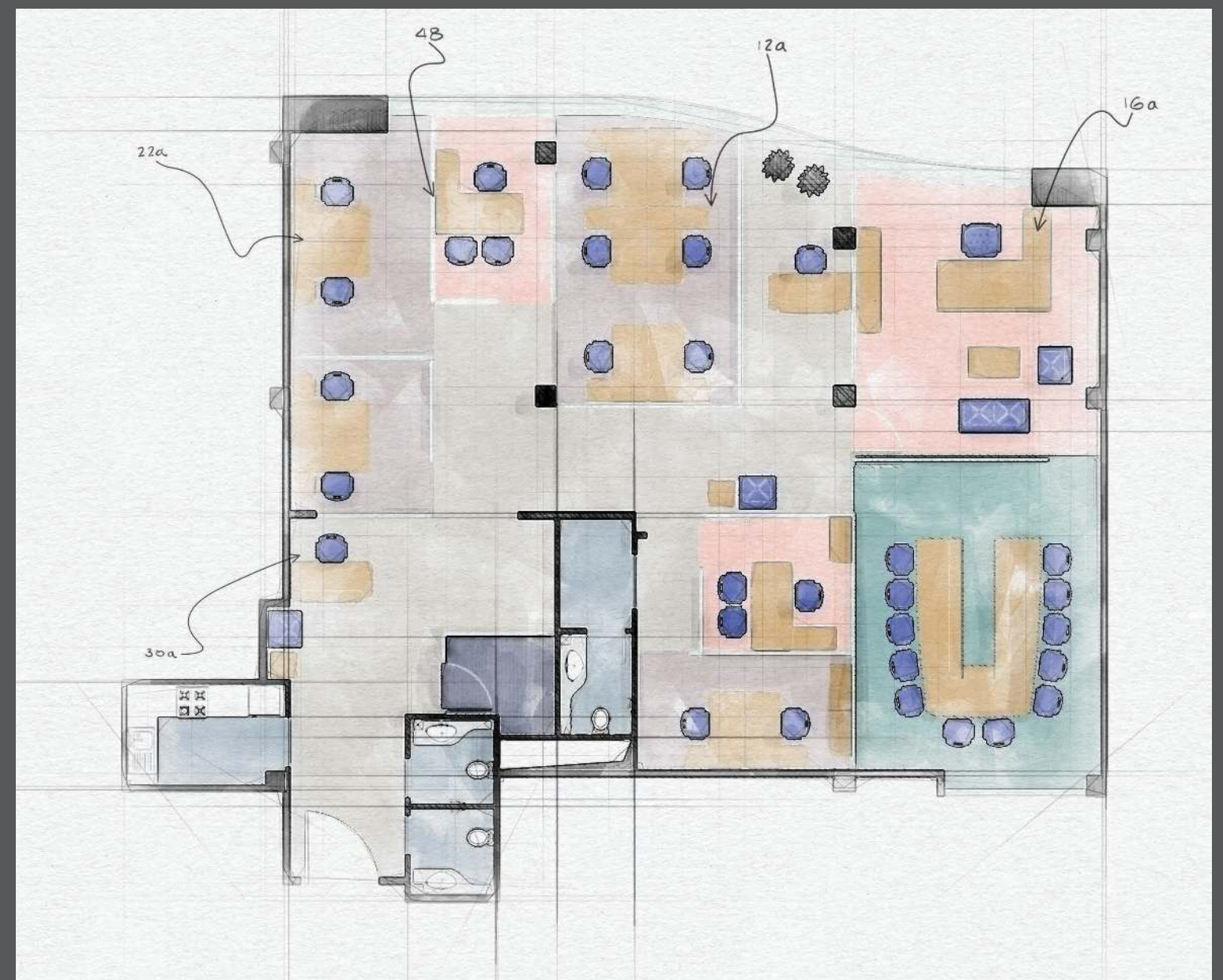
Executive Set

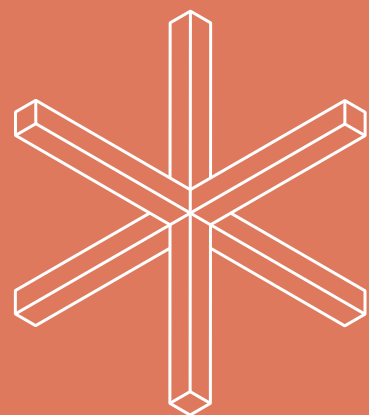


For design and space changes to work, all parties must leave their egos at the door—a point to be emphasized by change leadership for facilitating an environment of openness and information accessibility. Not everyone will be on the same page at the outset because various parties may be at different stages of the process, such as work design at the beginning and other departments later. To help alleviate these obstacles, change leadership should organize a group of change advocates. These can be representatives from each department who are trustworthy and approachable. The advocates can provide regular updates to peers and encourage questions to resolve any concerns or misinformation issues.

Lordegan Petrochemical Project Plan

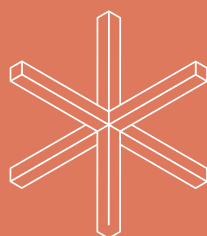
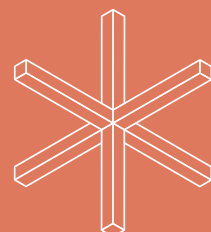
Creating a workplace that enables employees to do their best work relies on designers and architects to work together with businesses to find the best solutions for their spaces. By strategically incorporating plants and biophilic design elements, designers and architects are able to create spaces with some sound privacy while remaining aesthetically pleasing.





شرکت مسبار کاوہ

MESBAR KAVEH CO.



Mesbar Kaveh Project 2020

The design and production project of the office furniture of the head office of Mesbar Kaveh Company, which is one of the largest producers of raw materials in the country's electricity industry, was implemented in 2020 by the Paadiran Office Equipment Design Company and the top brand of office furniture.

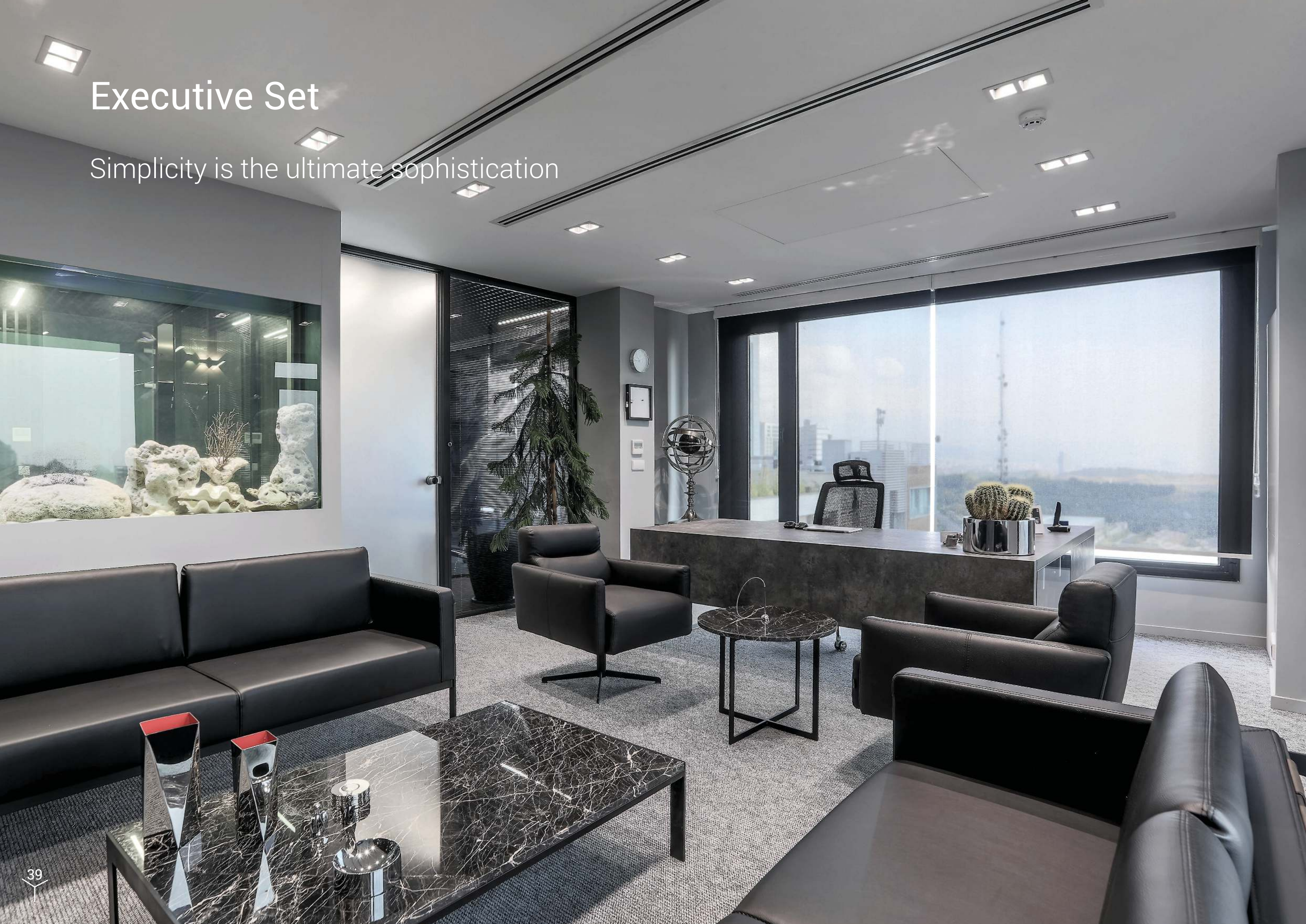
In this project, the employer had several requests from us, some of the most important of which are:

- Simultaneous use of formal and semi-formal office furniture together and with the aim of creating a sense of comfort and relaxation in the workplace
- The use of decorative elements and objects that originated from the personal tastes of the CEO of the collection, in the workspace used by him personally.
- Provide places for short, friendly meetings with a small number of people.
- Design a significant amount of archive cabinets to fit the company's interior design and to maintain technical and financial documents.
- Use calm and controlled colors in order to induce a sense of calm in the office work environment

The designer of this interior design and office furniture design project was Mr. Mohammad Ghazi Moradi, with whom we in the Paadiran office equipment design team have had the honor of collaborating on other projects.

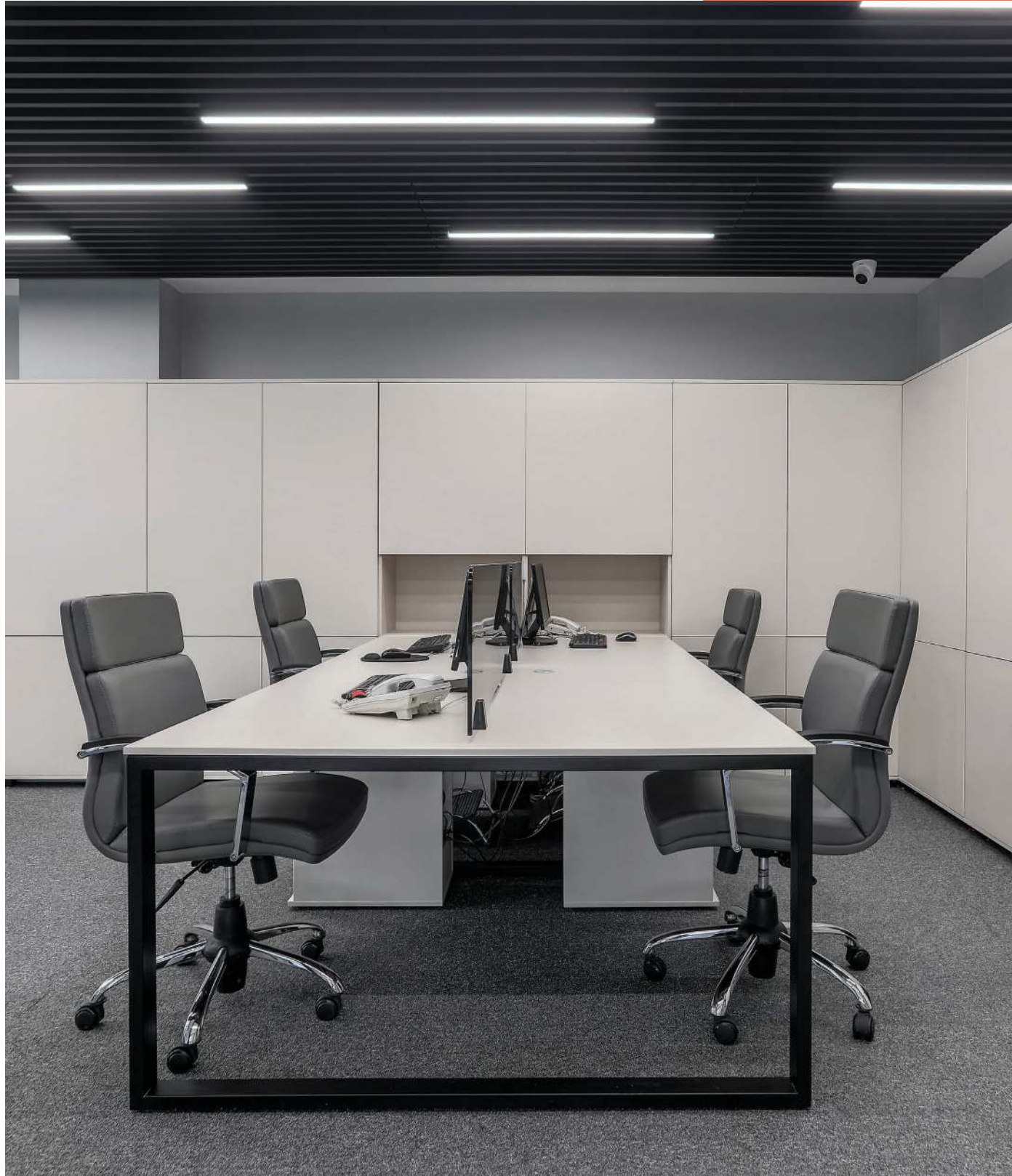
Executive Set

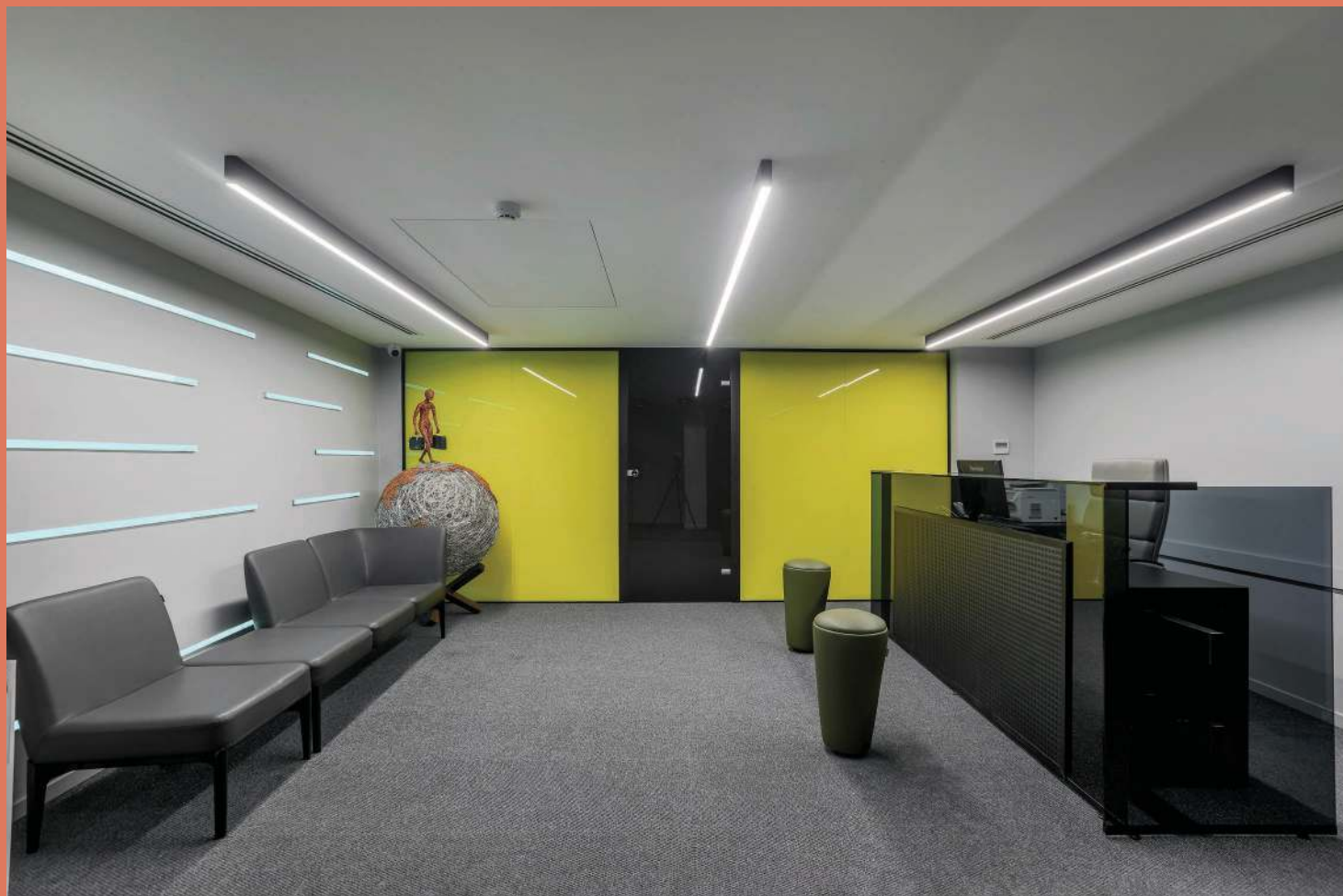
Simplicity is the ultimate sophistication



Workstation

Creativity is to discover a question that has never been asked. If one brings up an idiosyncratic question, the answer he gives will necessarily be unique as well.





Partition

Good designers must always be avant-gardists, always one step ahead of the times. They should—and must—question everything generally thought to be obvious. They must have an intuition for people's changing attitudes. For the reality in which they live, for their dreams, their desires, their worries, their needs, their living habits. They must also be able to assess realistically the opportunities and bounds of technology.



Executive Set

The future belongs to a different kind of person with a different kind of mind: artists, inventors, storytellers-creative and holistic 'right-brain' thinkers whose abilities mark the fault line between who gets ahead and who doesn't.

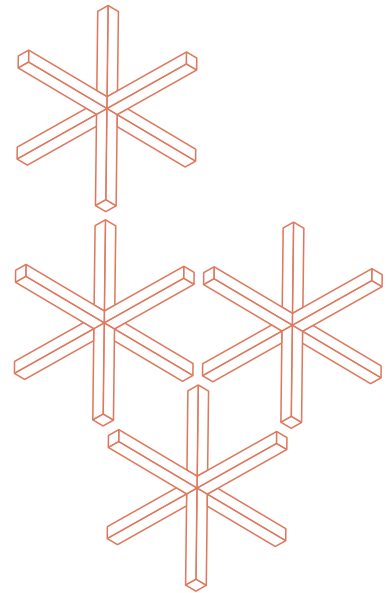


Executive Set

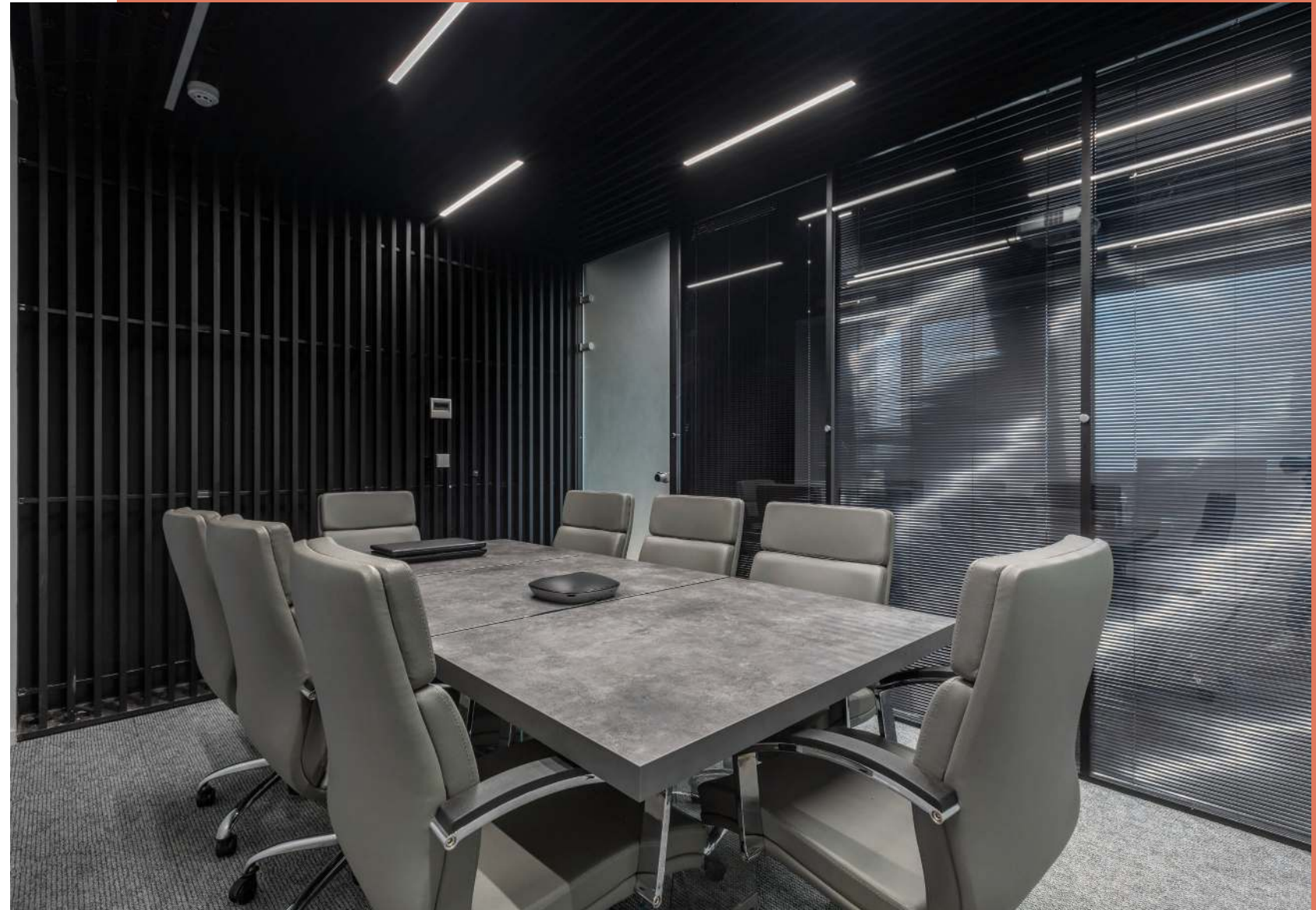




Workstation

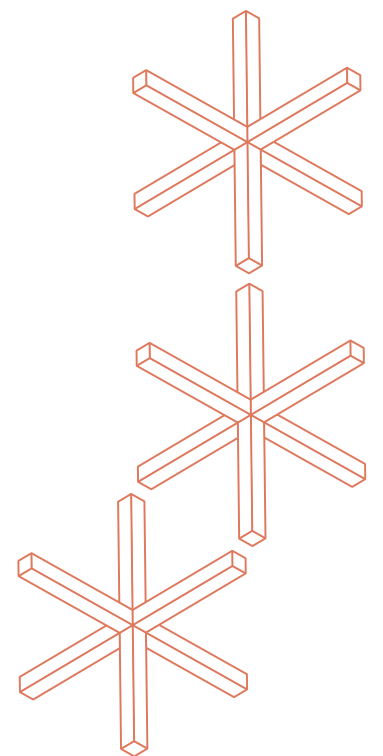
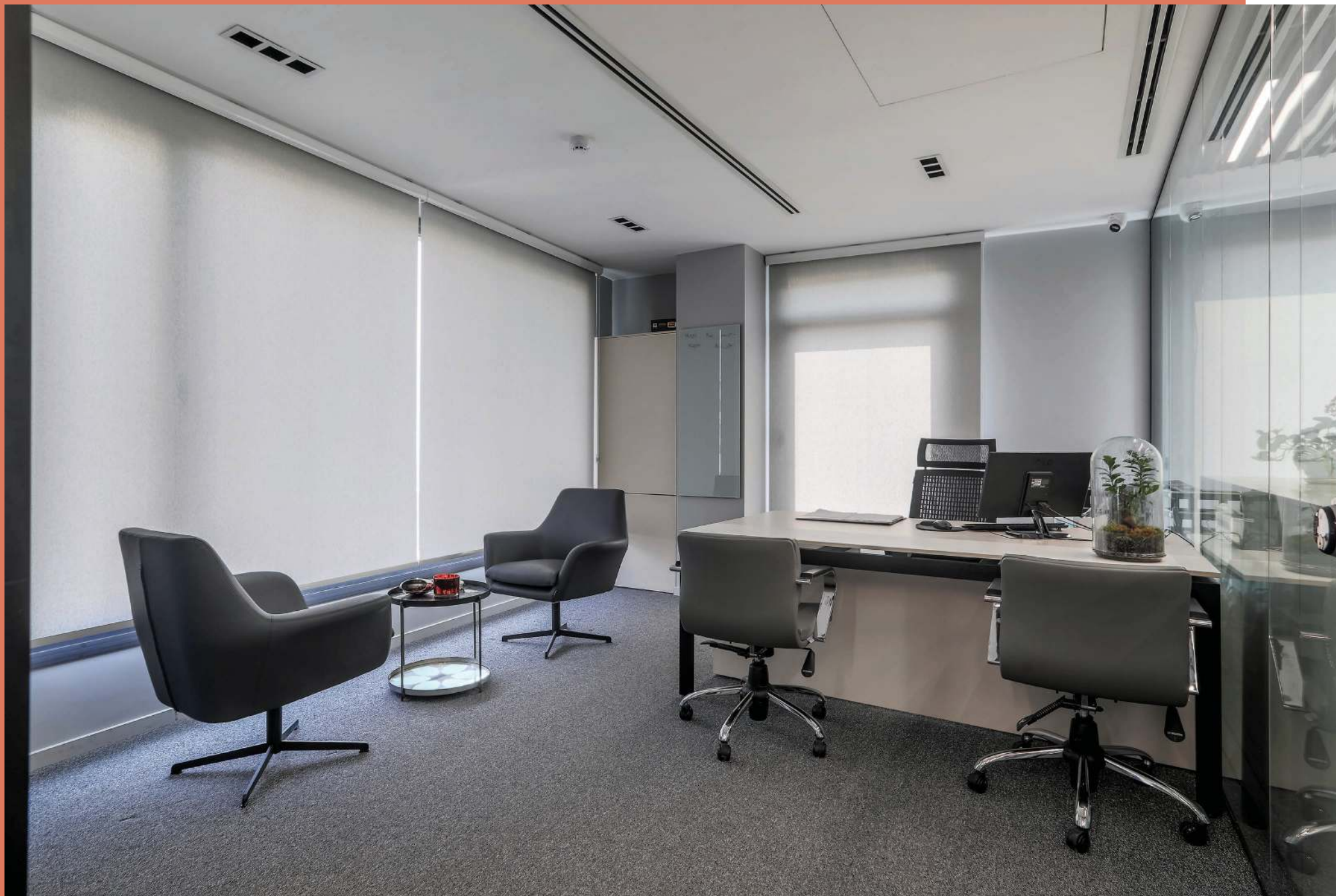


Concerence Desk

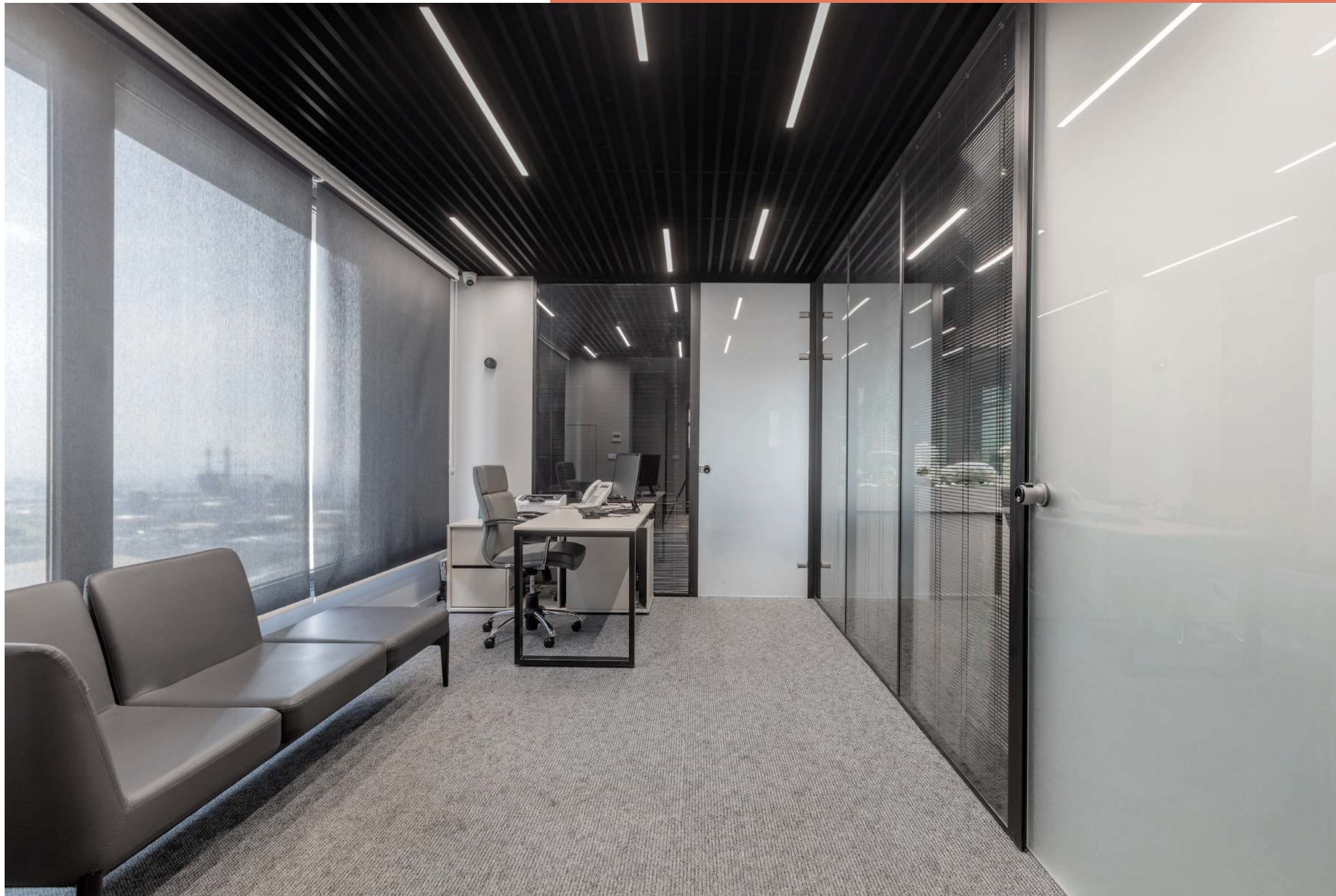


Manager Desk

Design is a formal response to a strategic question.

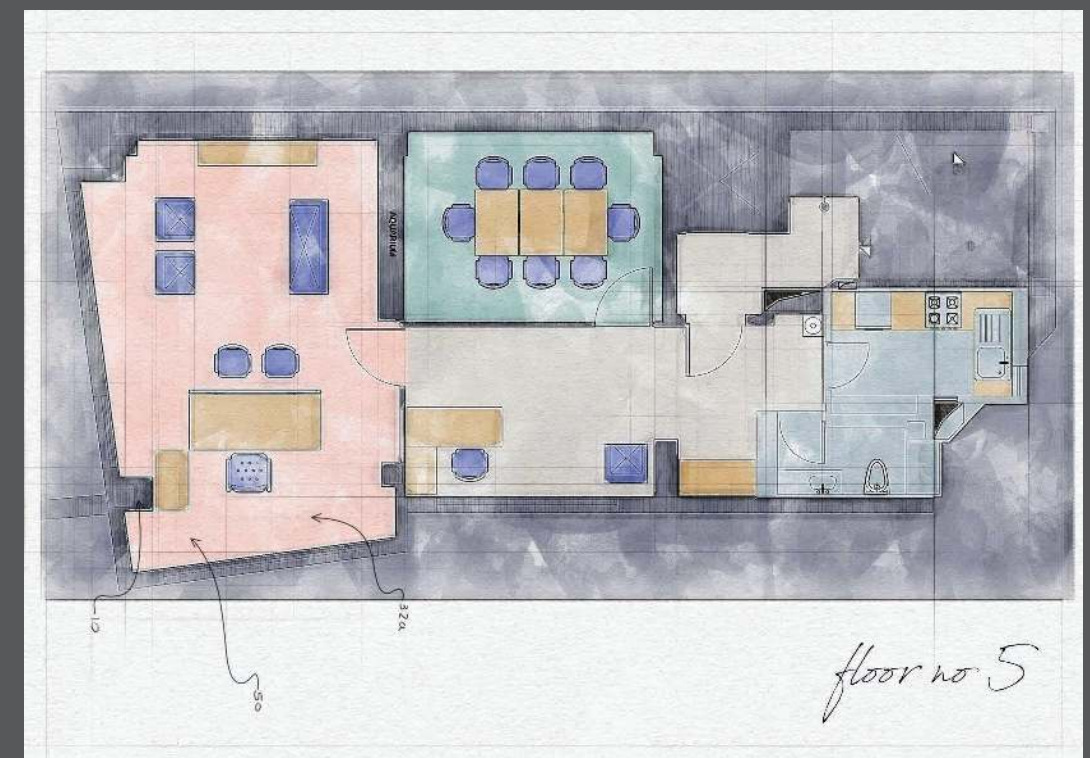
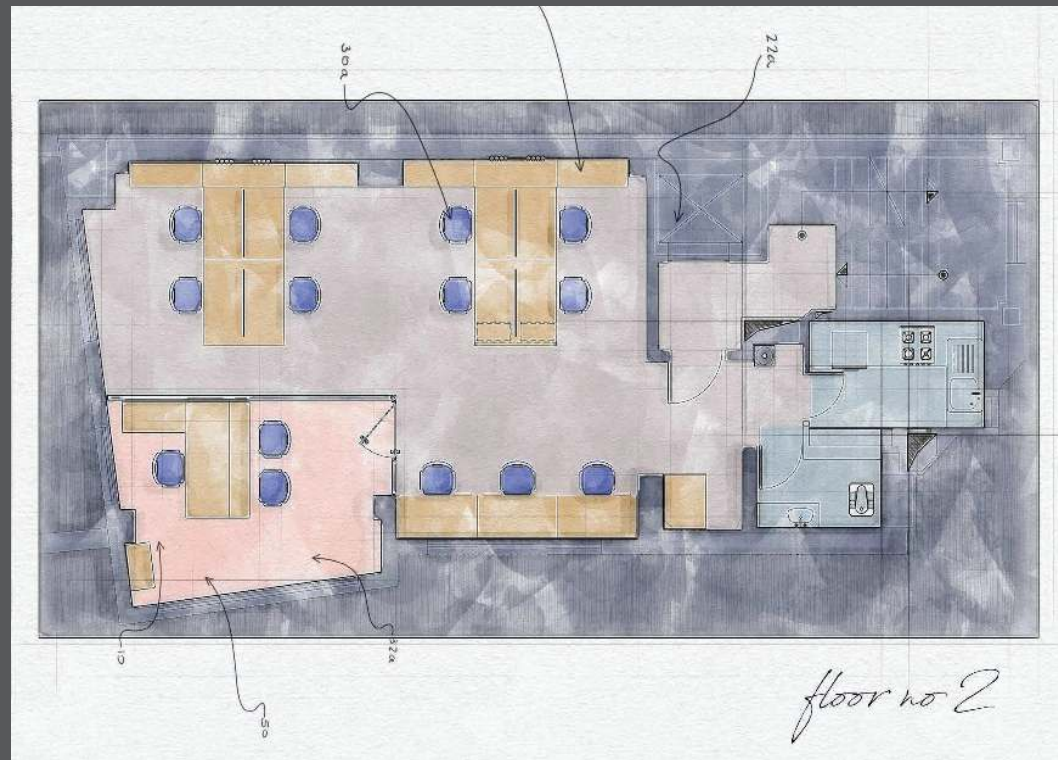


A designer is an emerging synthesis of artist, inventor, mechanic, objective economist, and evolutionary strategist.

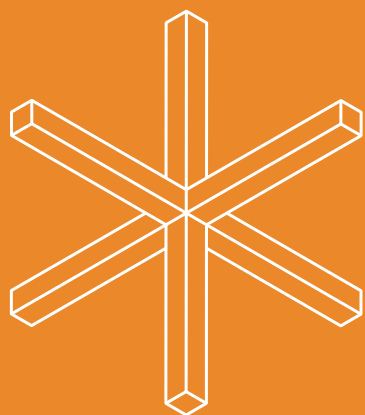


Artists can have greater access to reality; they can see patterns and details and connections that other people, distracted by the blur of life, might miss. Just sharing that truth can be a very powerful thing.

Mesbar Kaveh Project Plan







Nahayatnegar Stock Exchange Project 2020

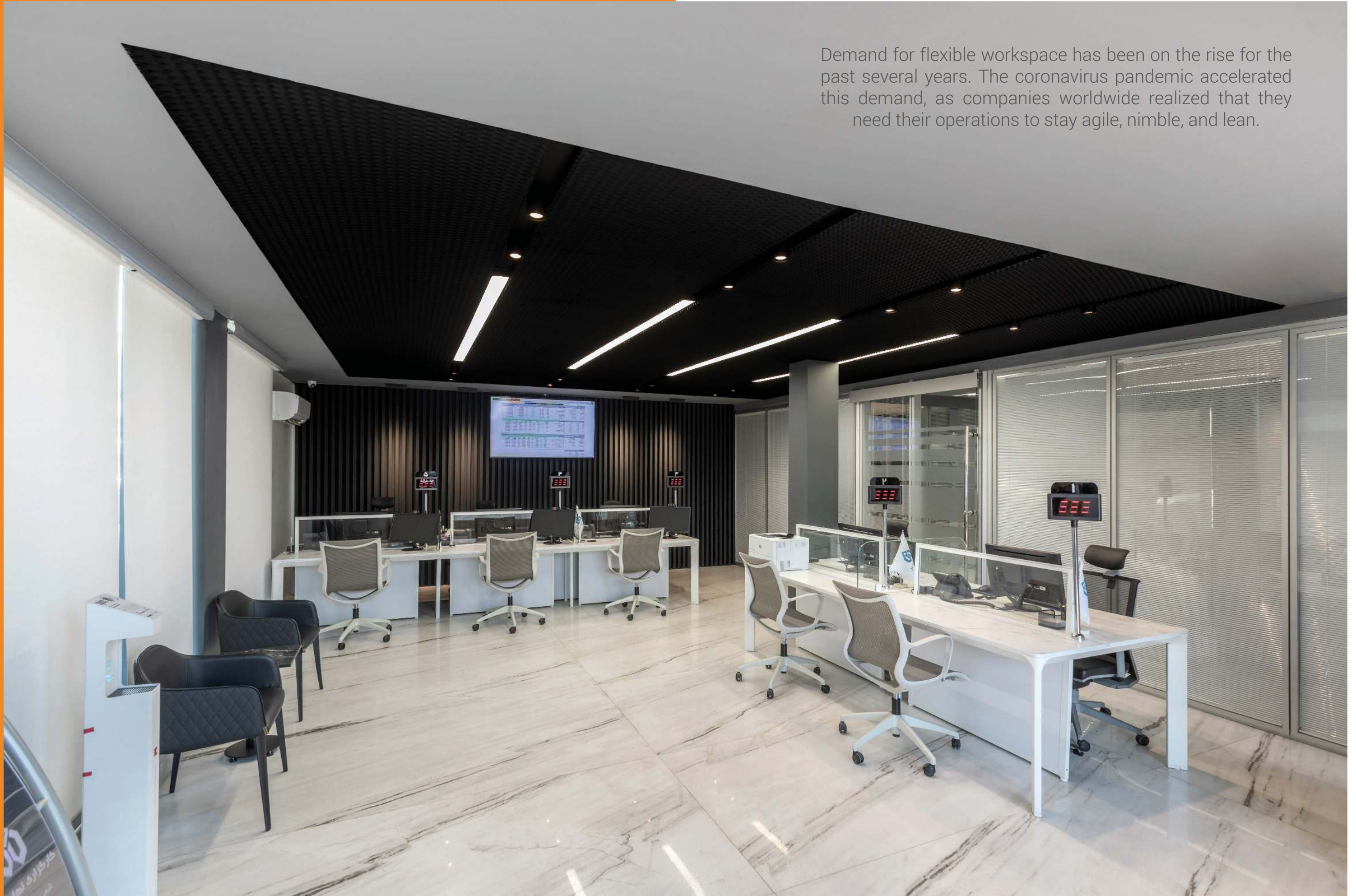
Nahayat negar brokerage company, one of the largest Iranian companies active in the field of capital market, handed over the equipment of one of its Tehran branches, which was designed and renovated by Faraho Architecture Studio, to Paadiran Company

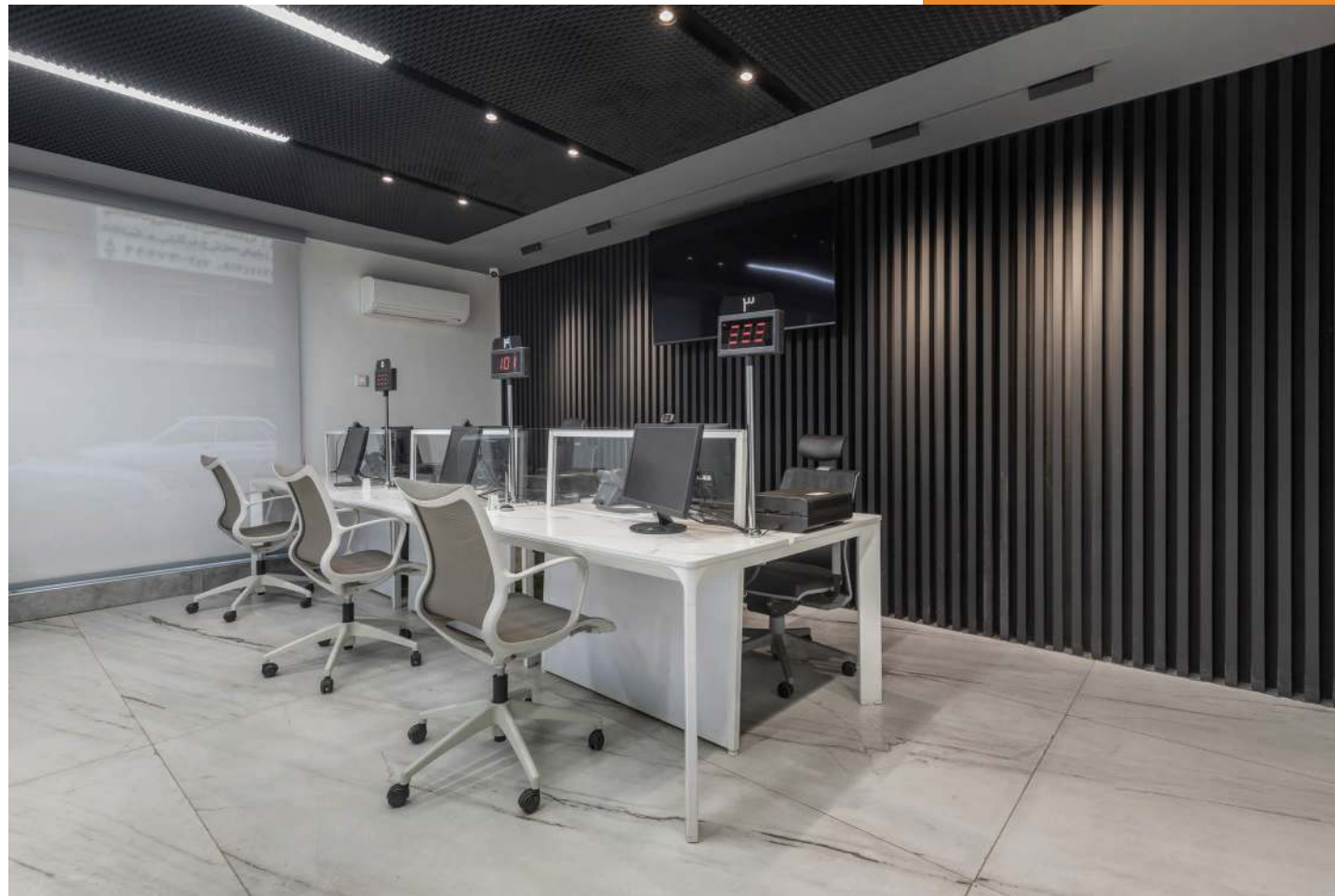
This project required different parts that were inherently different in function. Due to the essence of Nahayat Negar brokerage activities, in the beginning, the need to separate public spaces and private sections was considered. This was done well, thanks to the small design of the complex, despite the small space available. The most important part of this project was its entrance, which should be attractive and relaxing.

The next indicators were observing the visual identity of the organization, designing and producing functional office furniture for general uses, which, while being durable and functional, should be beautiful and up-to-date, and in accordance with modern interior design standards.

Considering the location of this complex, which is located in one of the busiest and relatively crowded economic and industrial areas of Tehran, creating a distinction between the exterior and interior of the building and instilling a sense of distinction and difference in the body of the organization in the minds of the audience was another challenge for Paadiran company. In fact, distinguishing Nahayat Negar brokerage from the environment and precise work divisions were the characteristics of this collection.

Demand for flexible workspace has been on the rise for the past several years. The coronavirus pandemic accelerated this demand, as companies worldwide realized that they need their operations to stay agile, nimble, and lean.





While the office will continue to play an irreplaceable role as a place to dream, build, collaborate and socialize – or just get out of the house for a few hours – organizations will have to think hard about how to optimize existing space. With many reports consistently revealing workers are missing in-person meetings and opportunities to socialize with colleagues face-to-face, focusing on collaborative workspaces is a way to do that. Even so, it'll be easy to overspend or misallocate real estate investments if accurate estimations of true space requirements aren't available.



Finding the right balance of densification to maximize value and congestion to maximize safety and willingness to return to work will be critical in the coming months and even years



Executive Set





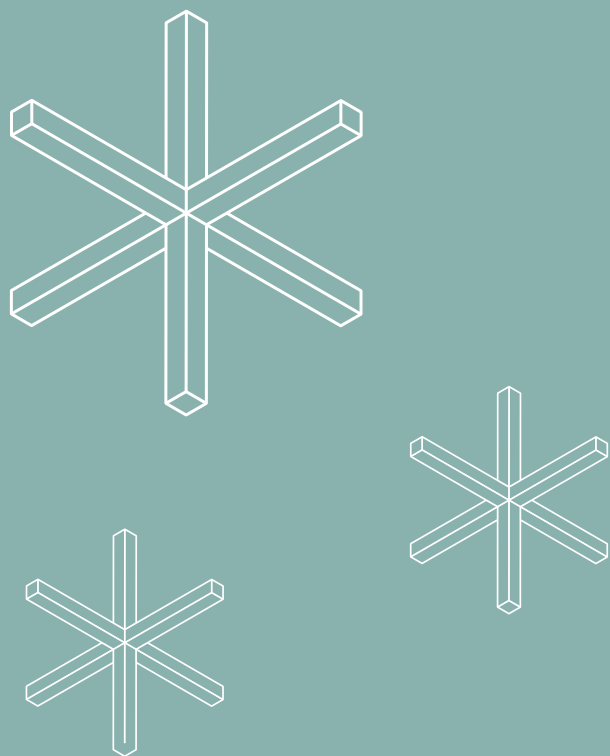
Workstation

Moving forward, there must be a strong emphasis on measuring how the workplace is actually used in support of teamwork, collaboration, culture, and wellness. If you are planning to reopen your office or offices and bring workers back, you need technology and data to plan the return. It'll require careful planning to ensure the workplace meets the needs of both employees and the organization, but done right, the workplace of the future will be an improvement on the systems of old

Coworking spaces have become the expected and preferred workplace of today's workforce. This is now truer than ever, especially as more companies shift to permanent remote work options following the coronavirus pandemic. Companies adopting hybrid work models are incorporating flexible workspace solutions into their real estate strategies in order to cater to the needs of remote workers across different cities and countries.

Conference Room





SunStar Project 2020



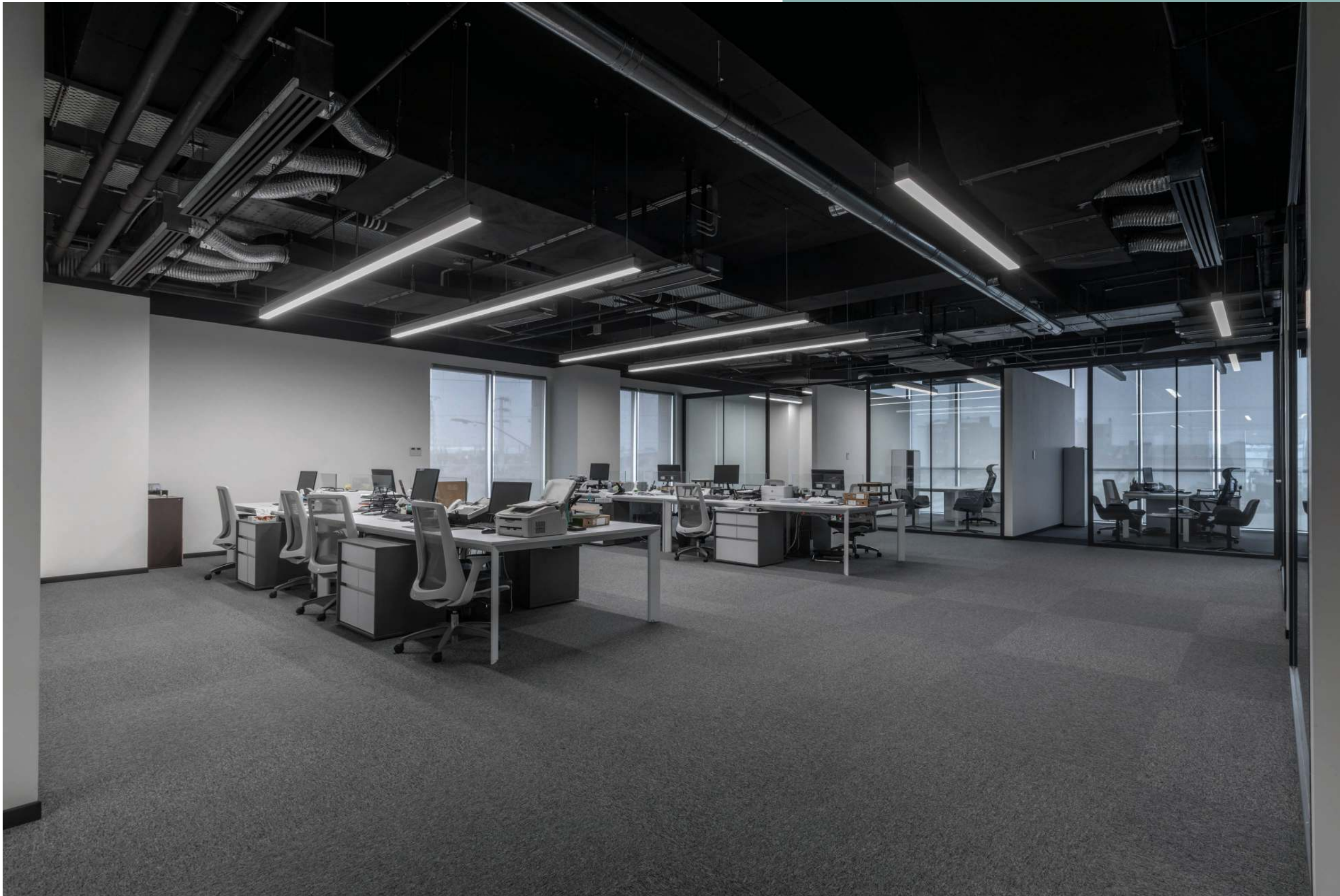
Zarrin Jam Marina Company is one of the largest Iranian companies in the field of FMCG and the owner of Sunstar brand in late 2019, after completing the new building they had built for the head office and with the aim of consolidating some of their activities, decided to move some of their scattered offices to Tehran and to a new location.

Interior design and subsequent design and production of office furniture of this project, according to the main topics of Sunstar brand book, was launched in April 2016 in Paadiran office interior decoration consulting company.

The design and implementation of this project, in addition to being challenging for us in this respect, was also one of the major projects of Paadiran Office Interior Decoration Consulting Company in terms of volume and scope.

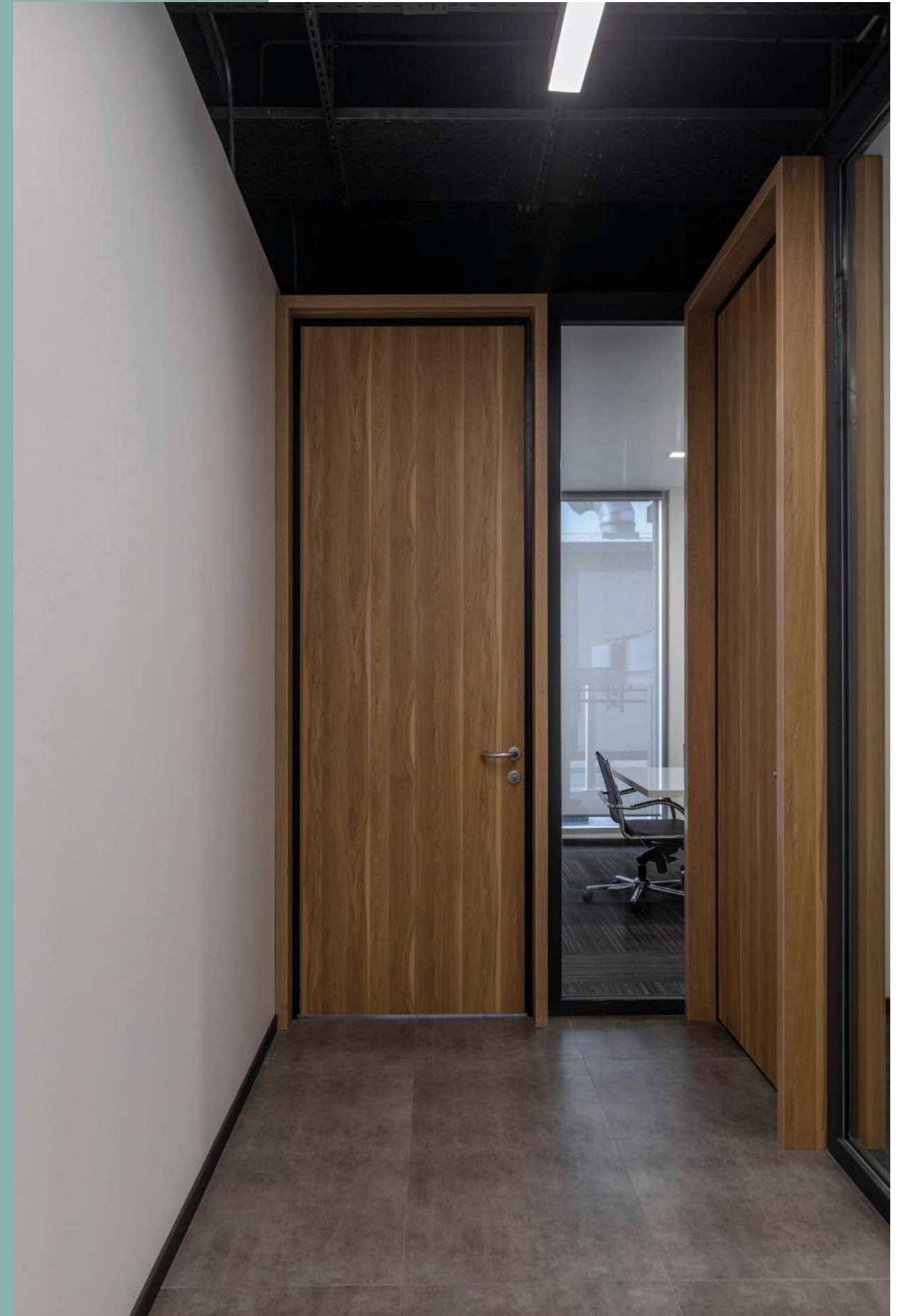
This building was done on 6 separate floors with different uses and a total of 5200 square meters in 1399.

Many workplace strategists are advocates of agile/flexible/smart/ remote/activity-based working and have been promoting the benefits since the early 90s. Benefits have been proven to include: increased performance, reduced absenteeism, enhanced cross-selling, increased attraction and reduced attrition, and business continuity as less disruptions due to travel issues or viruses. Empower people to work when and where they are most productive, including occasionally working from home.



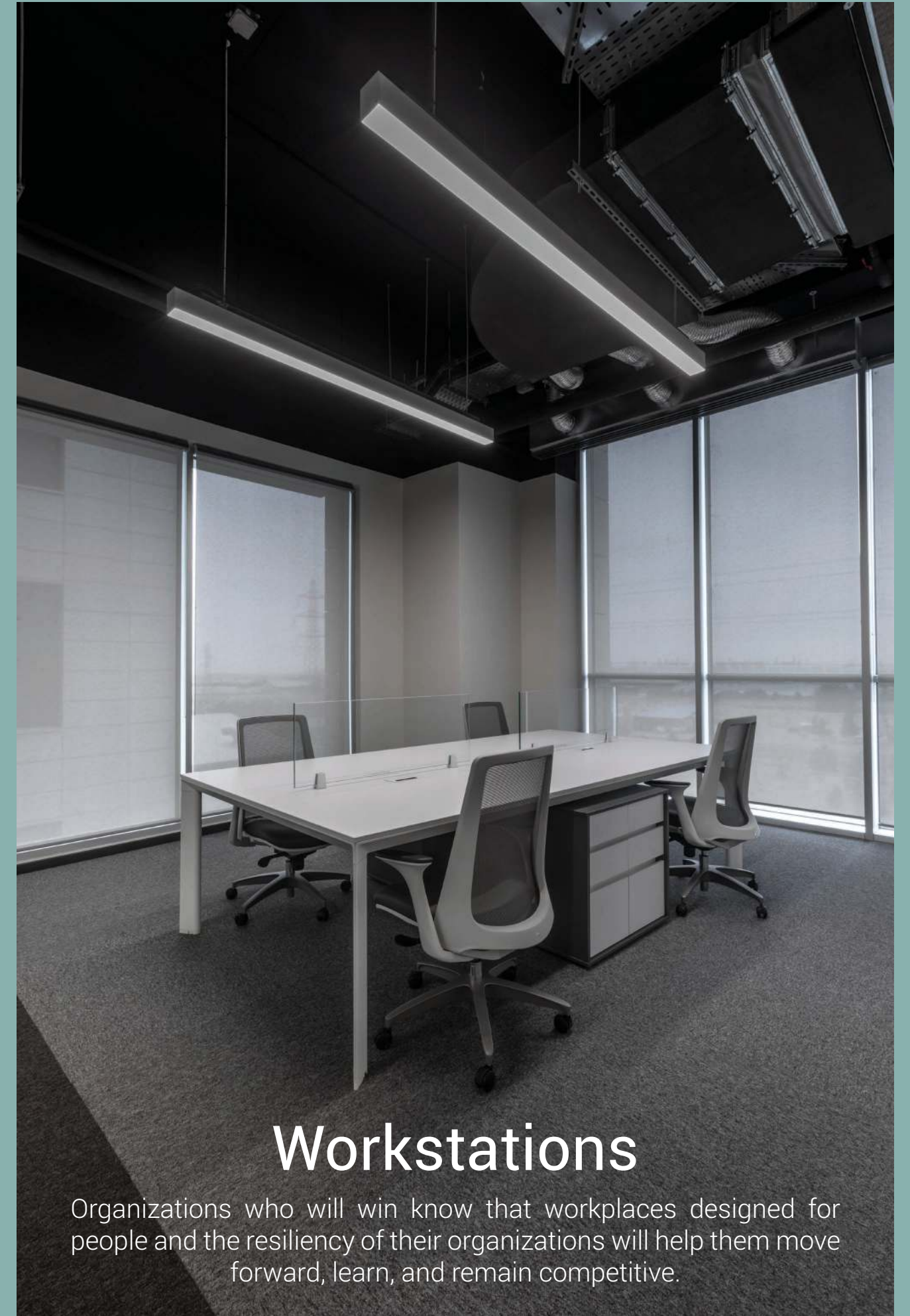
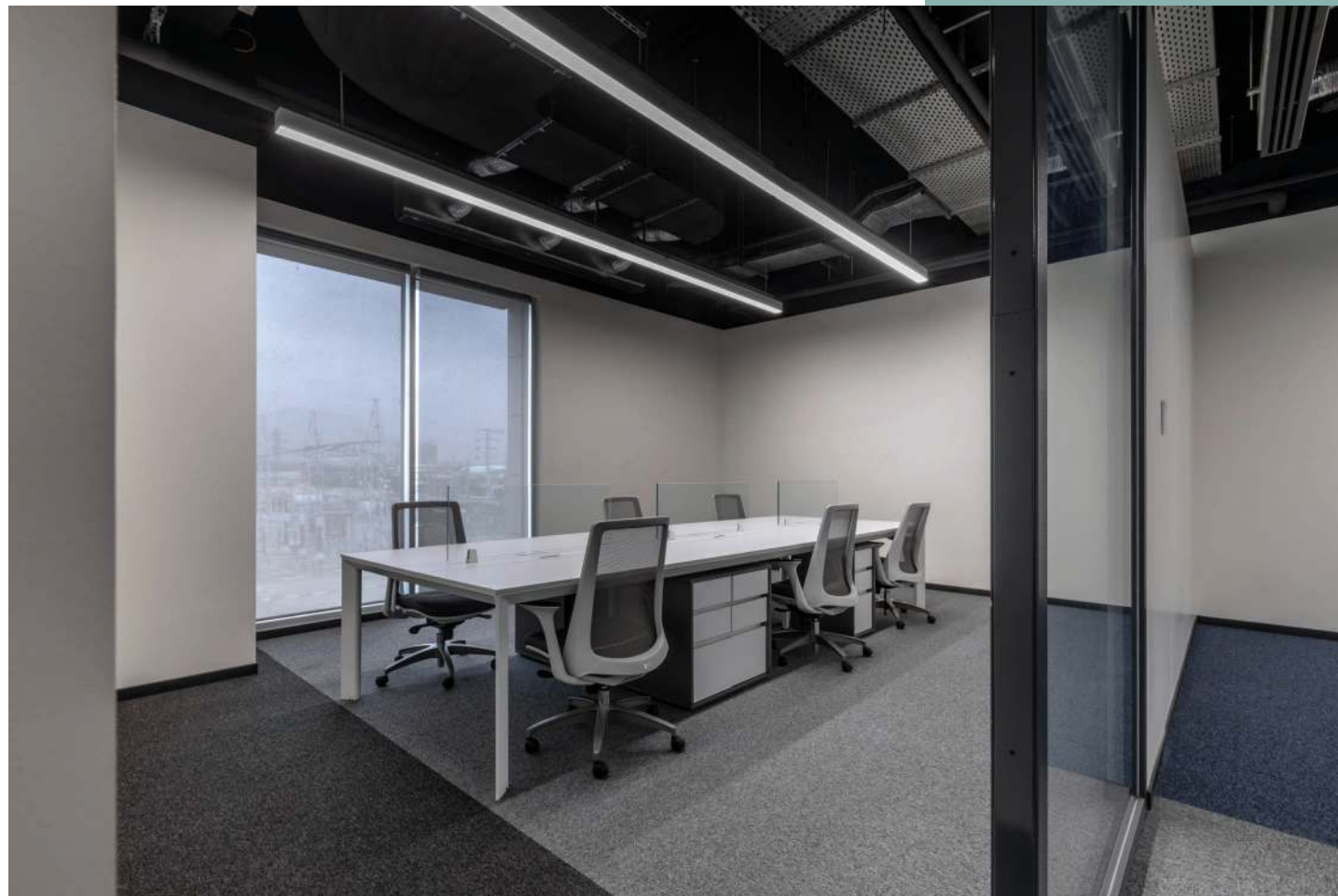
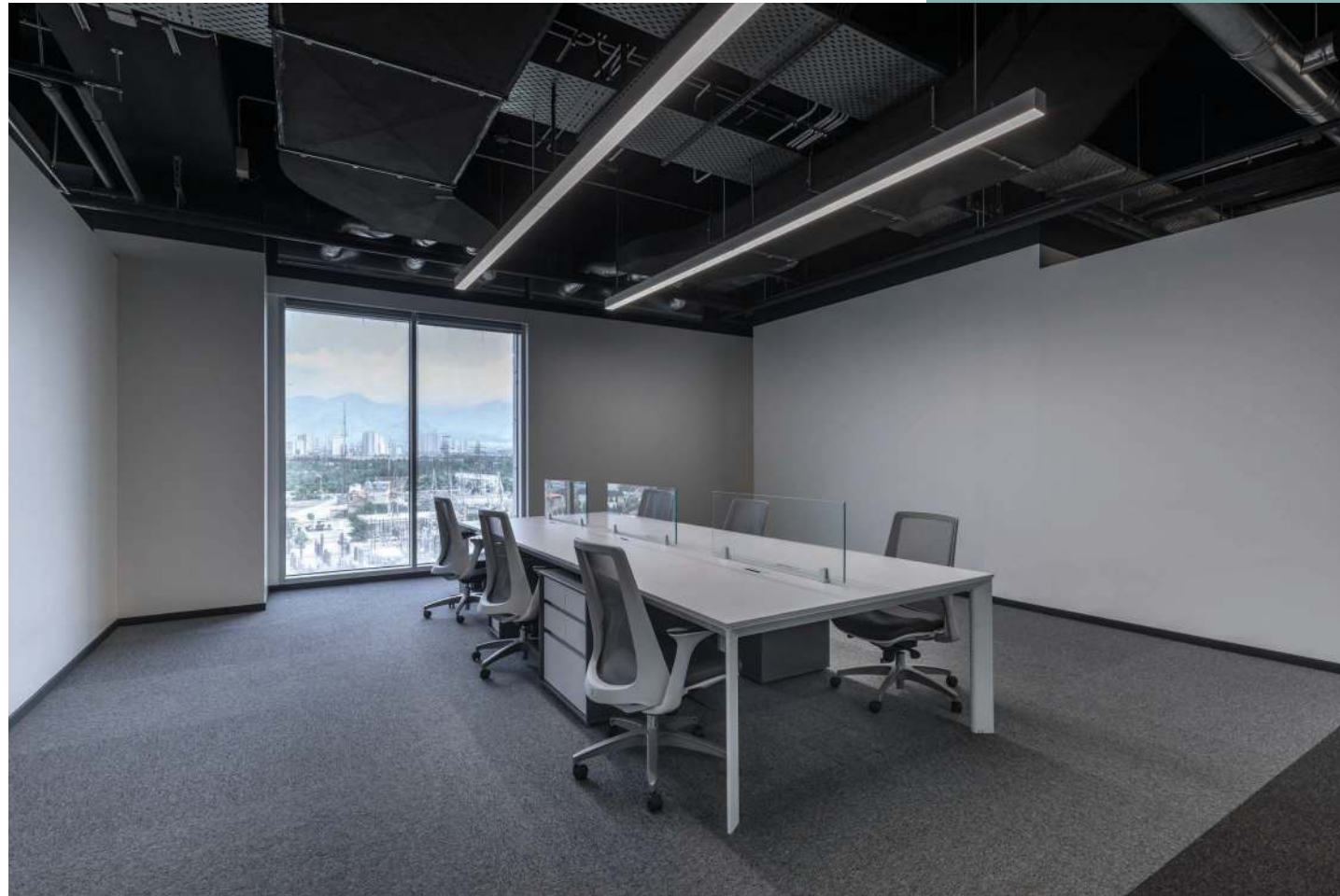
Doors

By implementing wellness activities into the weekly programming, employees will be given extraordinary experiences in person that they otherwise would not have access to at home, which provides them with the peace and comfort they've been looking for. With renewed enthusiasm, both the employee and the employer can easily transition back into a workplace environment with less anxiety, least stress, and maximum bliss.



Executive Set

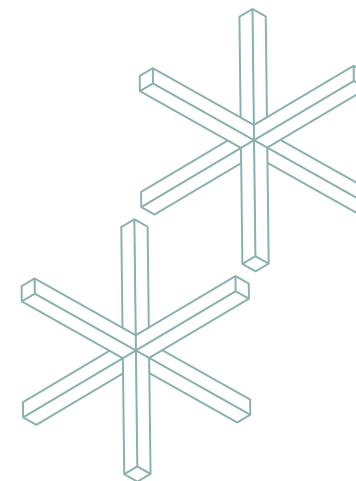




Workstations

Organizations who will win know that workplaces designed for people and the resiliency of their organizations will help them move forward, learn, and remain competitive.

While remote work has afforded many benefits to employees, in a recent study conducted by Oracle, 41% of employees polled stated that there was longer a distinction between personal and professional life, and that boundaries of acceptable work time versus time-off were blurred more than ever.

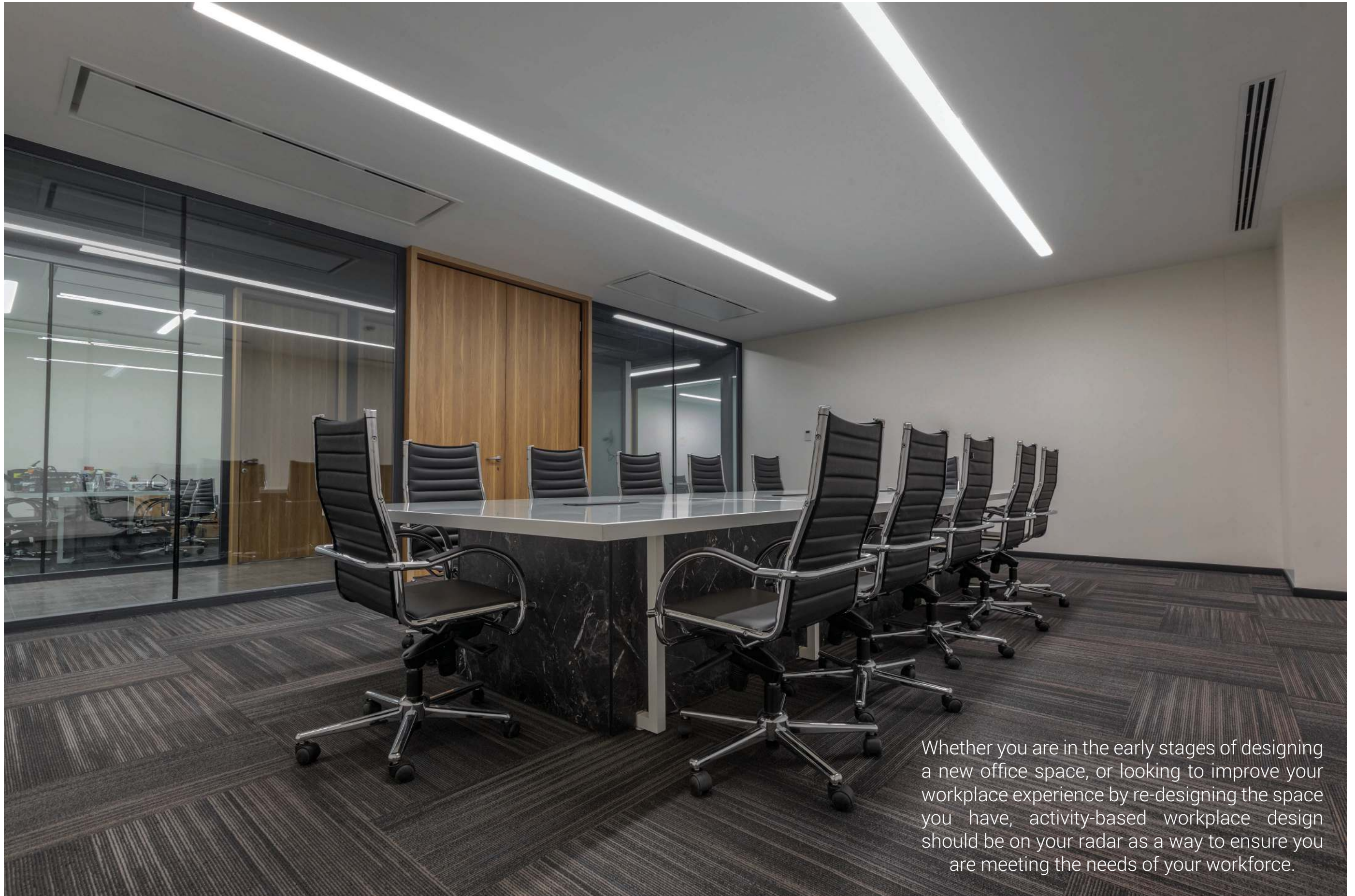


Counter

If the workforce are allowed to work from home for say two days per week and the time in and out the office is well managed, then the number of desks required will reduce by up to 40%.



Meeting Room

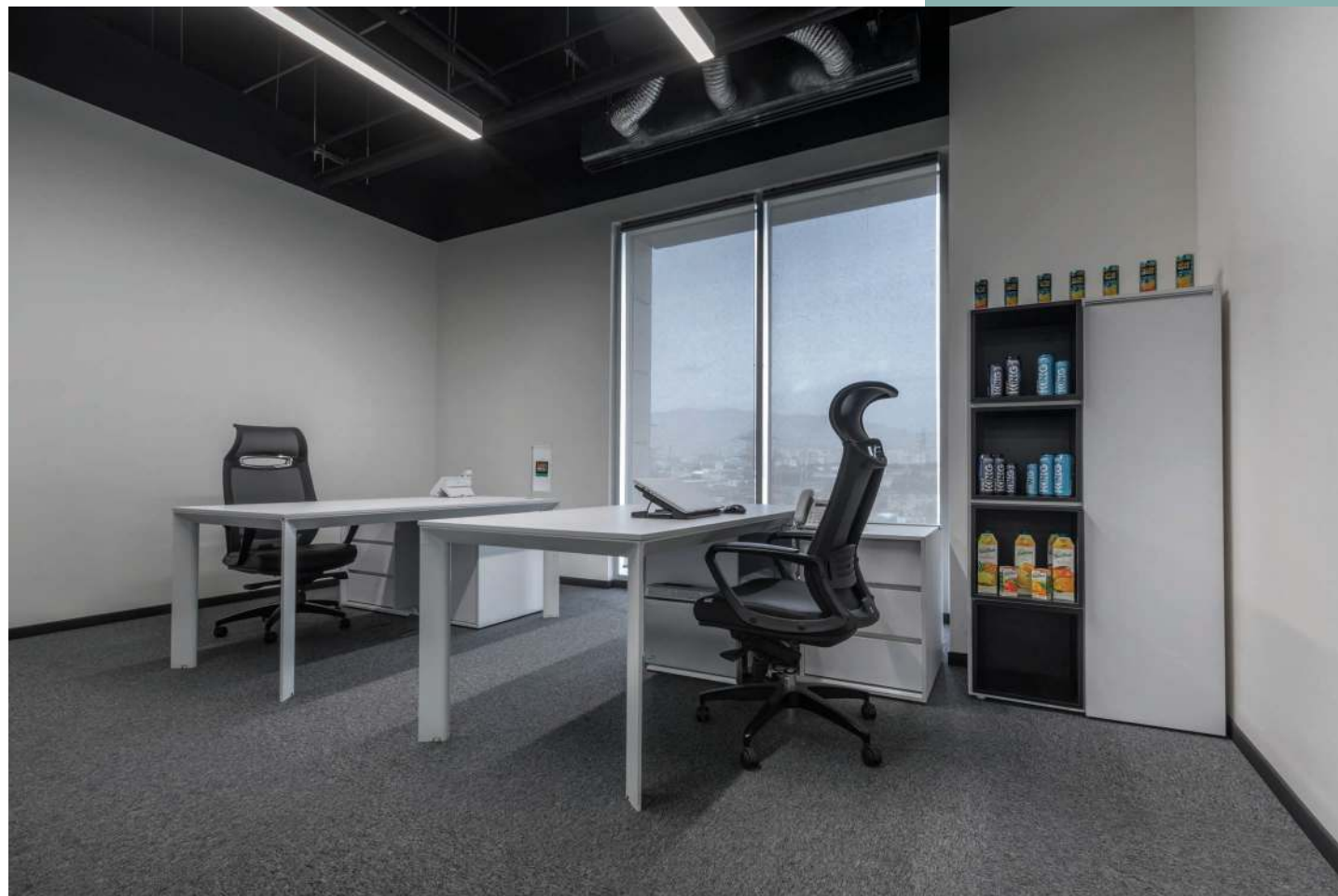


Whether you are in the early stages of designing a new office space, or looking to improve your workplace experience by re-designing the space you have, activity-based workplace design should be on your radar as a way to ensure you are meeting the needs of your workforce.



Manager Desk

Open collaboration spaces are inherently more flexible because they don't require fixed features in their design, so they can morph and change as new work patterns emerge. Innovation, problem-solving, and co-creation often use agile approaches — for example, quick stand-up meetings which require visible, persistent content which can be hosted in open spaces, defined by flexible furniture, easy-to-access tech, and other design elements.



Sun Star Project Plan

