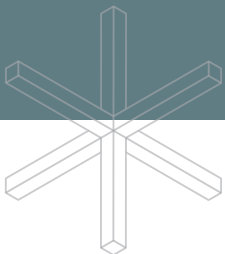
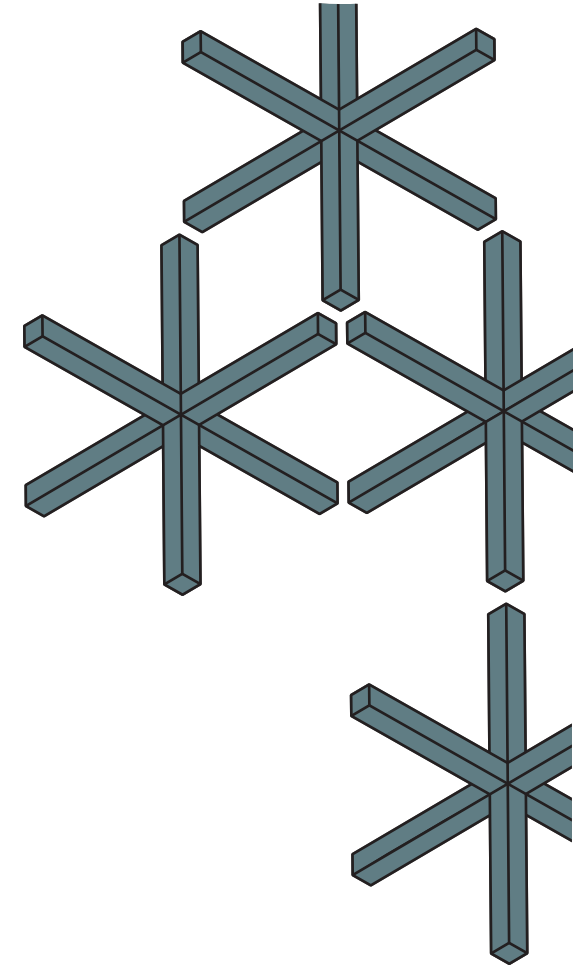


# Old Projects

**paadiran**  
since 1974





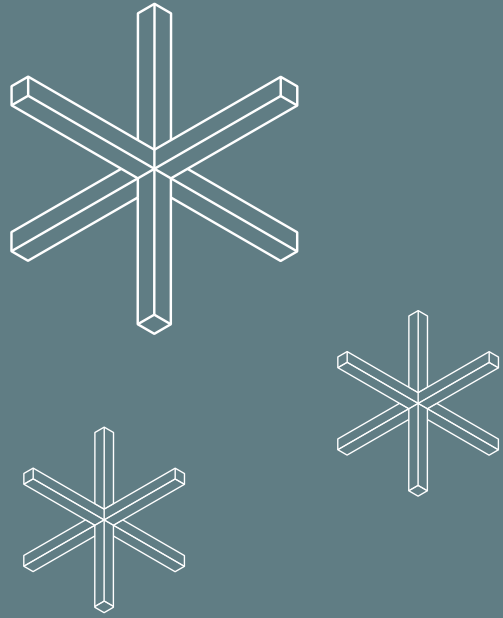
## Projects



Scan Me  
Paadiran Site

- 03 Azaran 2015
- 27 Ario Choob 2015
- 41 Goldiran 2014
- 59 Nestle Iran 2012
- 77 Irancell 2012

Regardless of what color palette is ultimately chosen, color is a powerful tool to help create a productive workplace. Effective workplace design must take into account how people react to color. As light waves scatter all around us, what reaches our eye has a substantial impact on how we perceive the world, and our ability to interact with it



# Azaran Project 2015

Sazehaye Sanatiye Azaran Company has already taken the development path in the venues such as design and construction of mining industries plants, road structure and execution of various types of urban structures in more than two decades of persistent and hard work.

Each floor has its own color which has been used as a decorative element. The eye chatching variety in materials is one of our strength point at Paadiran.





Accessible design is good design.





Two-thirds of today's workers say that they are more efficient when working closely with others. By providing collaboration enclaves with appropriate furnishings, acoustics, and technology, companies can maximize engagement and productivity.



# Executive Set



# Conference Desk

An intentional office design can aid in providing a soothing, comforting experience for those returning to in-person work. Showcasing artwork that evokes calming sensations or gives employees a sense of place can help ease the transition. In fact, 92 percent of people say art installations elicit positive feedback.







# Workstation

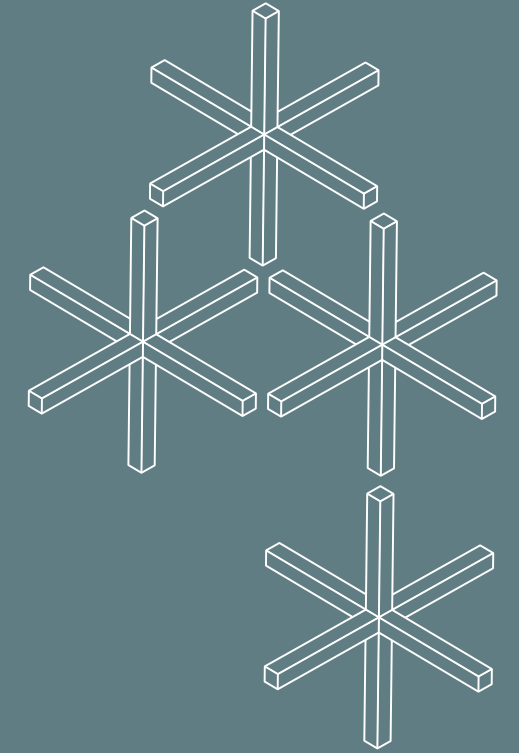
Organizations often forget the physical space where employees function plays a vital role in their productivity and satisfaction at work. Creating a welcoming, and safe, atmosphere for employees is not only important, it's necessary.





One of the reasons workplace wellness has garnered so much popularity over the past several years is because investing in wellness pays off. With the right workplace wellness strategy, organizations can reduce turnover, increase productivity, reduce stress, and prevent burnout. Wellness programs have also been shown to improve employee morale and overall job happiness.





Too often, people think of art as a thing to hang on the wall. But art can be anything and go anywhere. From interior walls, to parking garages to entire sides of a building, large scale artwork creates an experience you have to see to believe.





# Manager Set

Despite all of this change, we will always need workspaces that foster collaboration, innovation, creativity and a sense of belonging.





# Executive Set



When it comes to workplace design, there is more to a good work environment than a comfortable chair and fast internet. The color of our workplace can also impact how we work, and color psychology is a growing area of interest for designers. Choosing colors that can increase happiness, productivity, and well being can help ensure that we are providing an enjoyable and effective place to get work done.





# Conference Desk

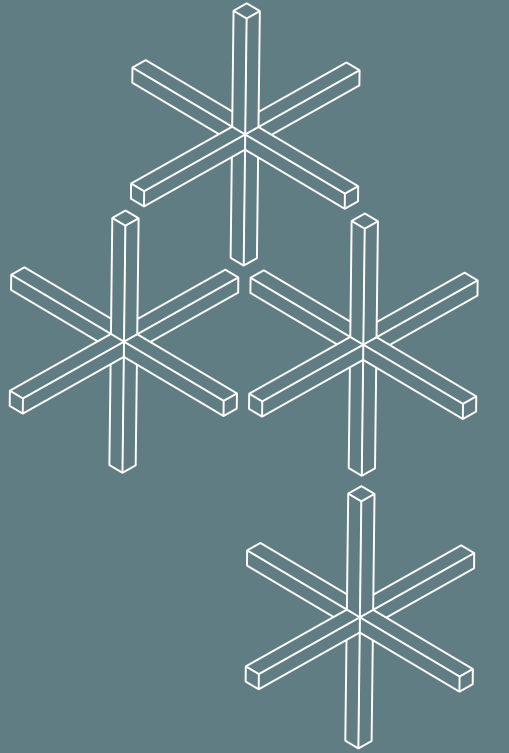
Work from home has taken a severe toll on employees' mental and physical health. It has the opposite effect of work-life balance for many. Instead, it is causing employees to be more stressed, sleepless, and experience severe burnout, which can be challenging to manage without access to the appropriate resources.







# Workstation





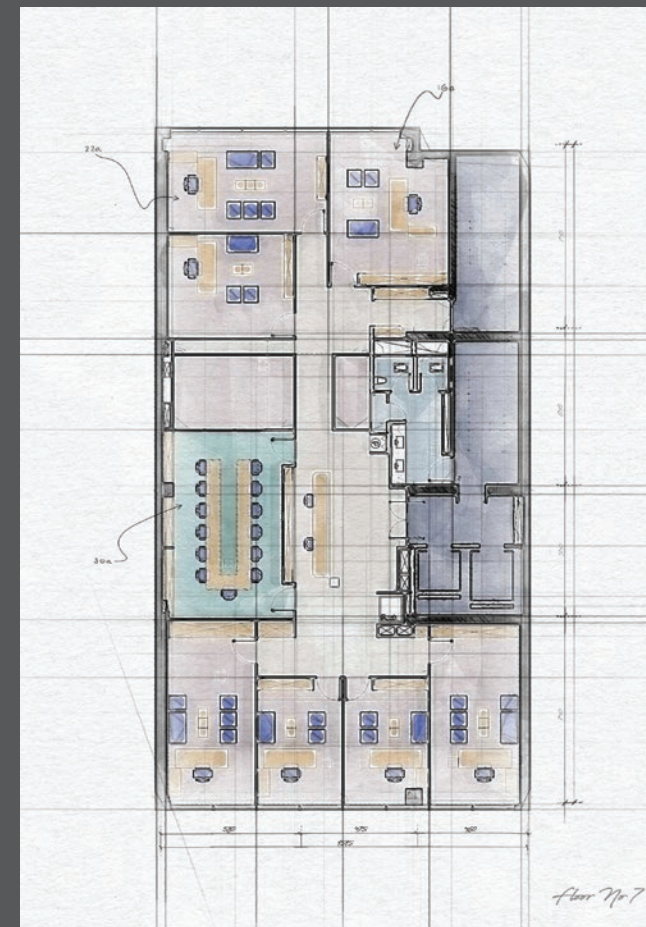
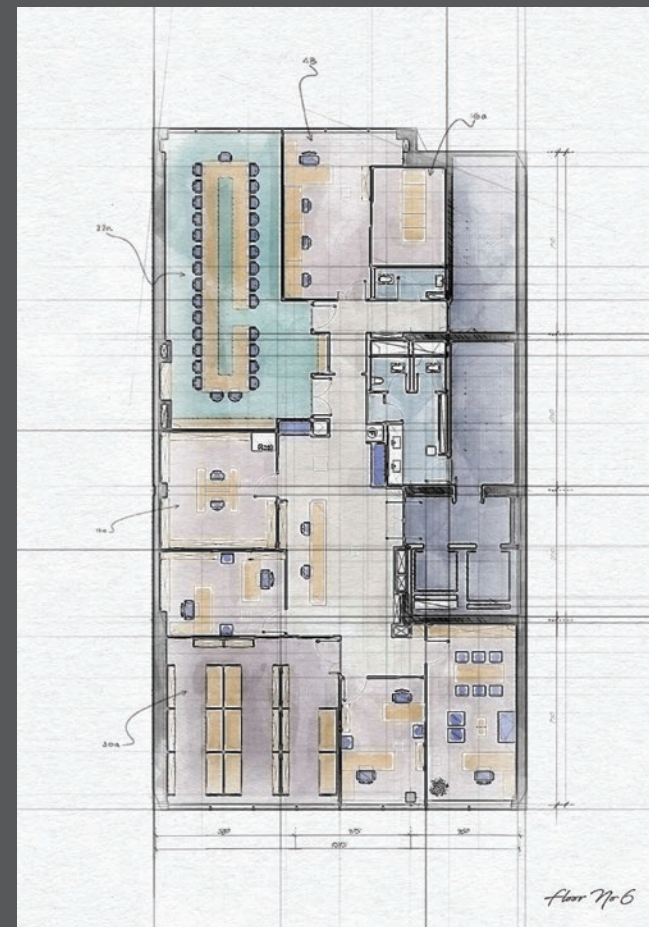
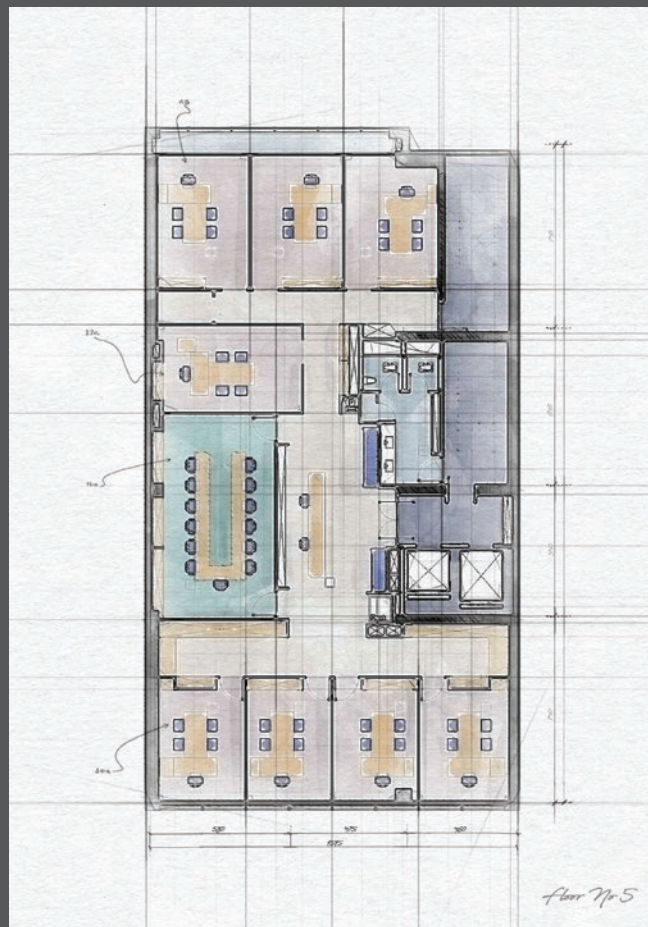
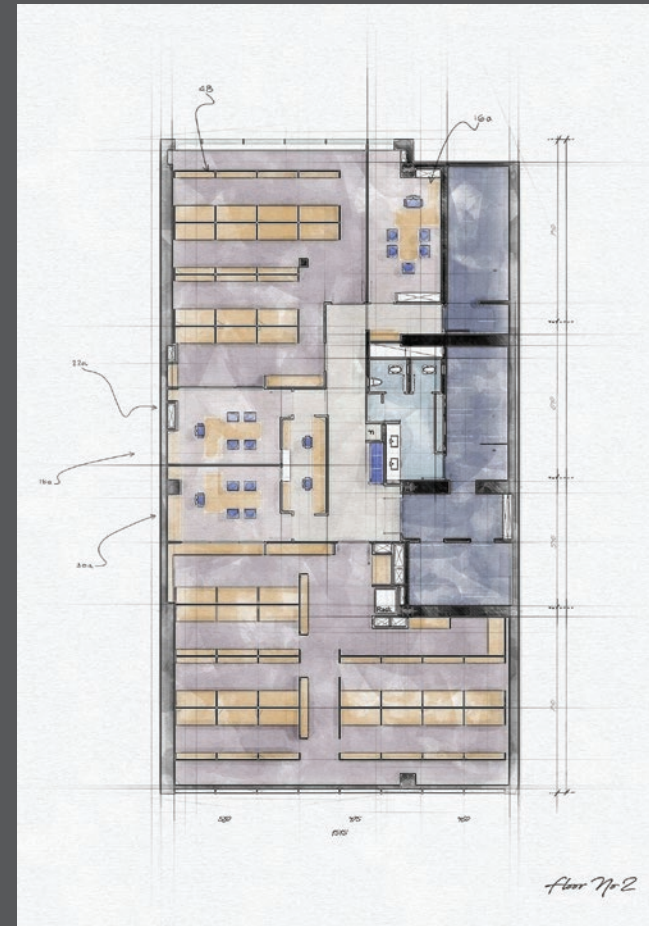
# Counter

Some workplaces use detailed aesthetic designs to reduce worker stress. These might involve the use of plants to improve mood, the use of specific types of lighting, and the use of alterations to make a space “feel” less crowded.





# Azaran Project Plan







# Ario Choob Project 2015

The Ario Choob office exhibition project, which is an exhibition for imported lumbering machines, is located in Improvement of Iran Wood Industry Industrial Town.

The project was designed by another architectural office headed by Dr. Taghaboni, who in addition to designing the space, also designed all the desks and office furniture. This alone has been one of the main challenges of the project for us.

In order to achieve the desired result, joint technical meetings were held between the Paadiran team and Dr. Taghaboni, and during these meetings, the proposed plans were turned into executive plans as the technical issues were resolved.

Paadiran, with the support of experience, expert force, and machinery, has made it possible for designers to produce furniture to suit their tastes, which in itself plays a significant role in the all-round accompaniment of spaces and furniture together.



## Alireza Taghaboni

Architect

Alireza Taghabani (born 1356) is an Iranian architect. Taghabani graduated from Gilan University in 1381 and then continued his studies at the doctoral level of Islamic Azad University, Tehran Research Sciences Unit. He is the winner of four periods of the architect's award and the first period of the Dorfman Royal Academy Award.





## Executive Set

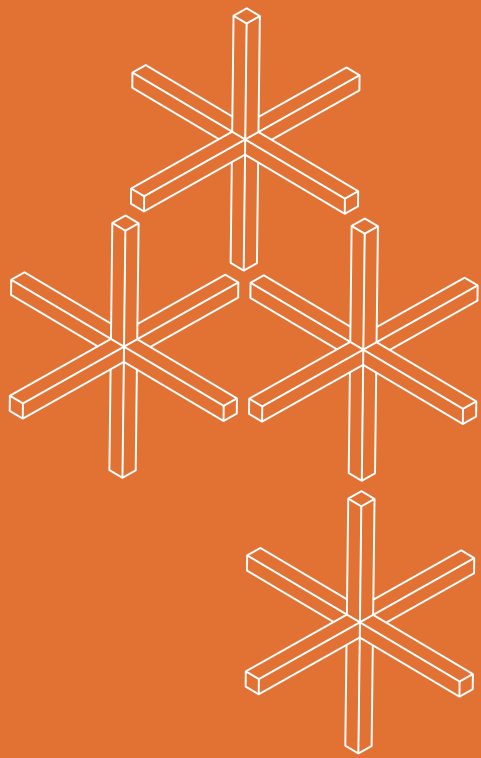
Isolation, loneliness, and depression levels are expected to decrease as people go back to the office given that this will provide some escape from the monotony of working from home. The office will become a safe haven, especially for those who are craving social interactions and thrive from working around others.







# Conference Desk





# Manager Desk

Without a doubt, our surroundings affect our health. Design for wellbeing is a top priority for many businesses. Among the findings: prolonged sitting is a profound hazard to health. On the upside, natural light and other elements of nature can improve health and productivity.





# Decorative Partition

In recent years, wellness has become a top priority for employers. Leaders are realising that a healthy workforce is a happier workforce, which equates to better levels of engagement, productivity and company loyalty, not to mention fewer sick days.







## Partition Detail

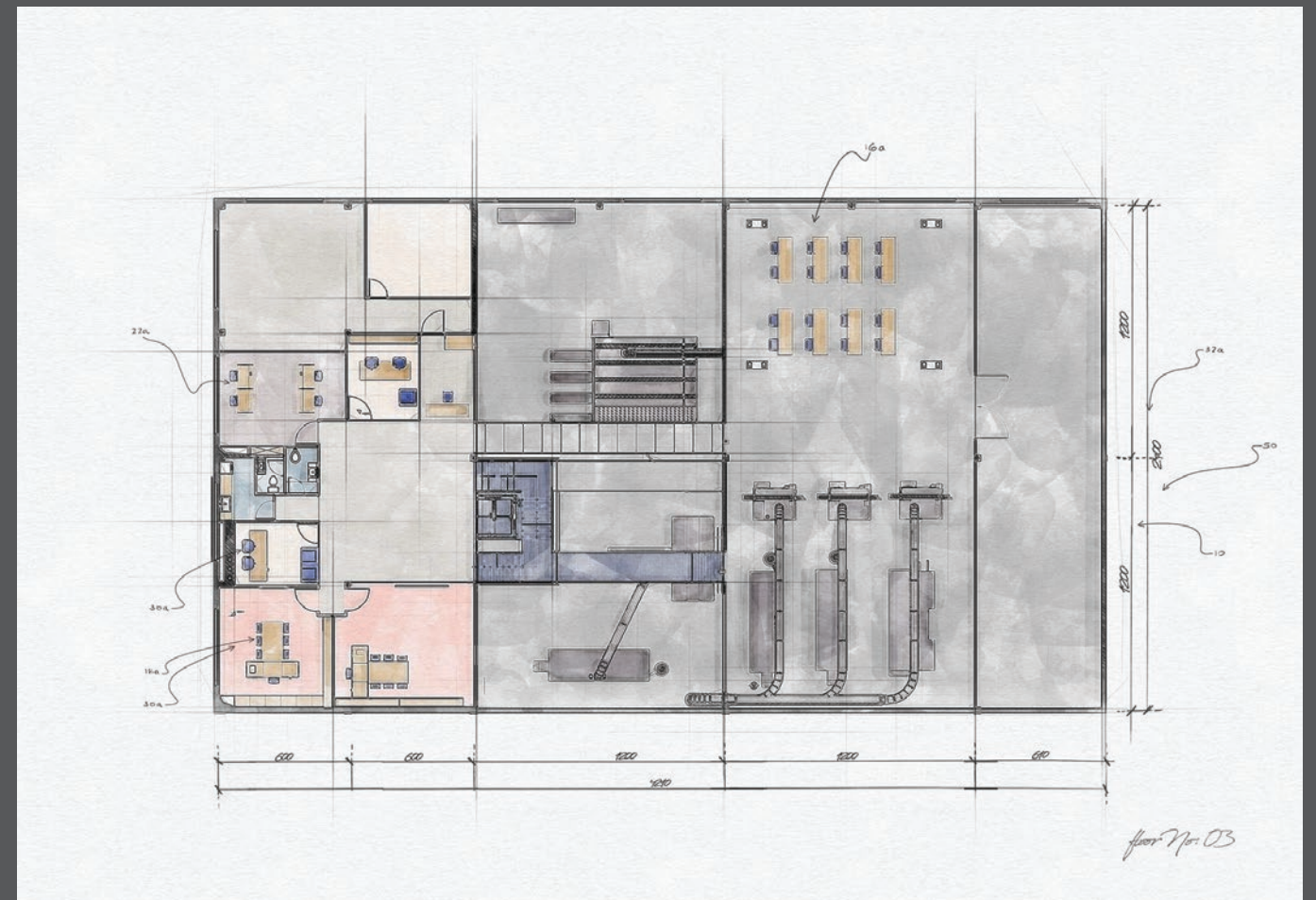
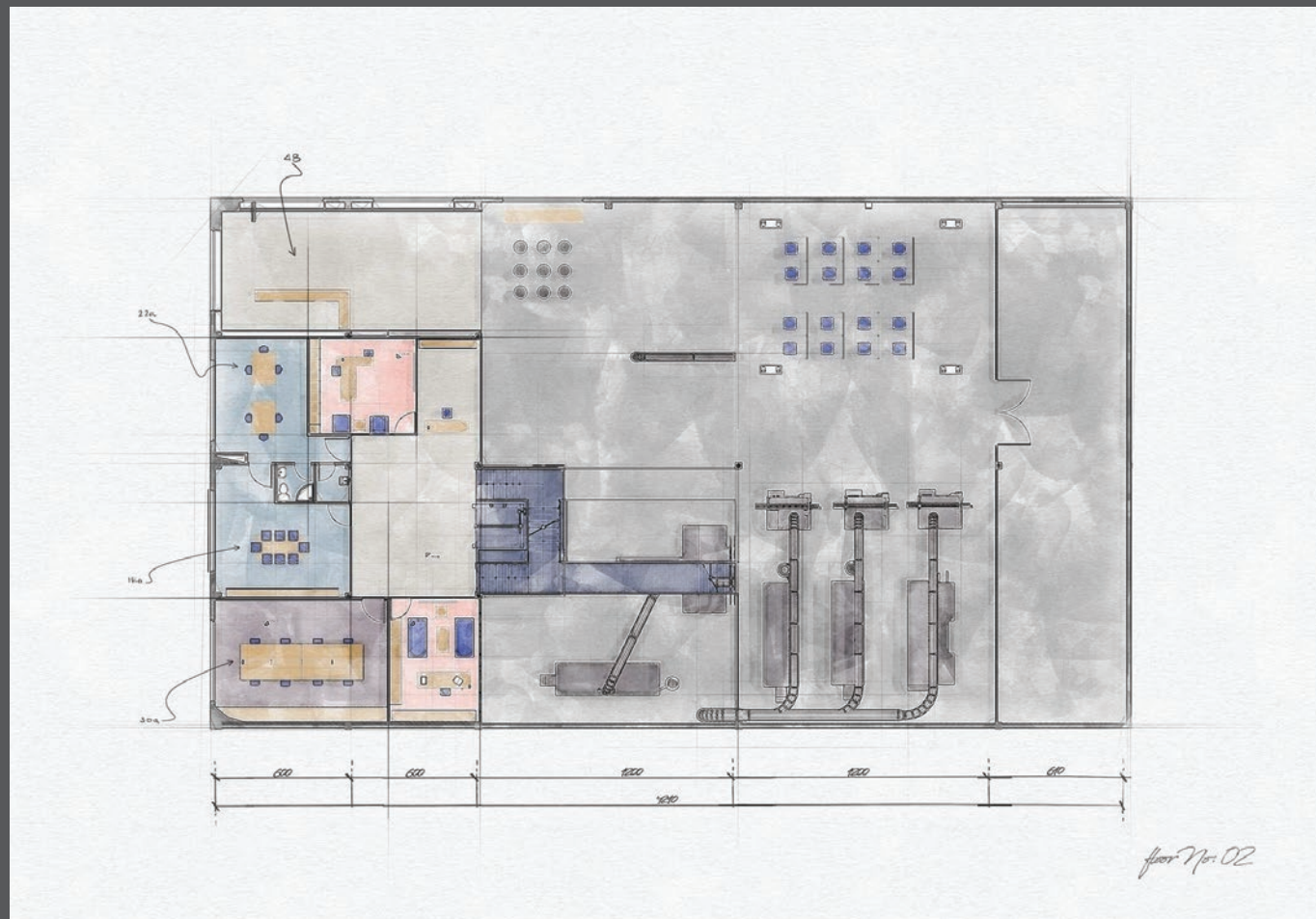
As the most abundant color in nature, green is a good choice for spaces where people spend long hours as it is easy on the eyes and promotes feelings of balance. In one study, even brief glimpses of green were shown to enhance the creative performance of workers.



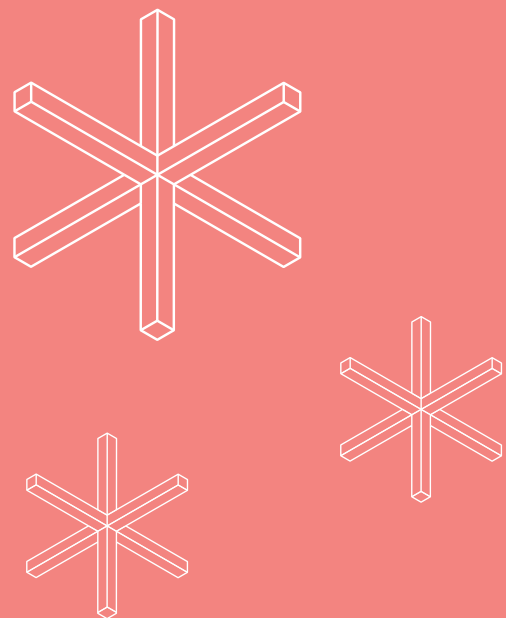




# Ario Choob Project Plan







# Azaran Project 2015

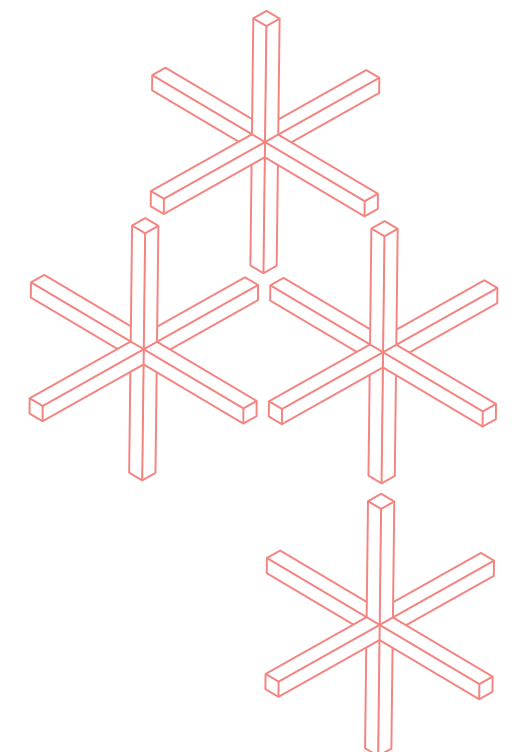
The headquarters of Goldiran Company in a newly established and famous building at the time of construction was one of the relatively old but attractive projects of Paadiran. In this office, next to the after-sales service department, there was also the call center of Goldiran Company, which due to its nature could cause congestion and loss of focus of other departments. Something that never happened with the special design of call centers in a special way.





# Executive Set

When going through the design process, balancing function with the latest fads will determine whether or not you create a successful working environment.





Paint choices can have subtle but important effects on mindsets. Exposure to blues and greens has been proven to improve performance on tasks that require new ideas, while red improves performance on those that need attention to detail.





# Meeting Room

There are several design options that businesses should consider to facilitate a shift towards a more inclusive, “Work from anywhere” model. We recommend work spaces that visually represent a business cultural values and encourage social connection. This can be achieved through the use of transparent rooms with acoustical privacy, artwork and graphics that speaks to a company’s brand identity and soft seating in formal and informal meeting spaces. In our experience, these options all encourage socialization and create space for mentorship and conversation. This encourages socialization in the workplace because when workers see that employees of all levels are accessible for informal and formal conversation the culture of social connection and community is strengthened.





It has been widely documented that a person's well-being impacts overall company performance. Workers who feel well are overall more productive, more engaged, and happier at work. On the other hand, if a worker's wellbeing is suffering, their work will also suffer, and so will their feelings toward their employer.







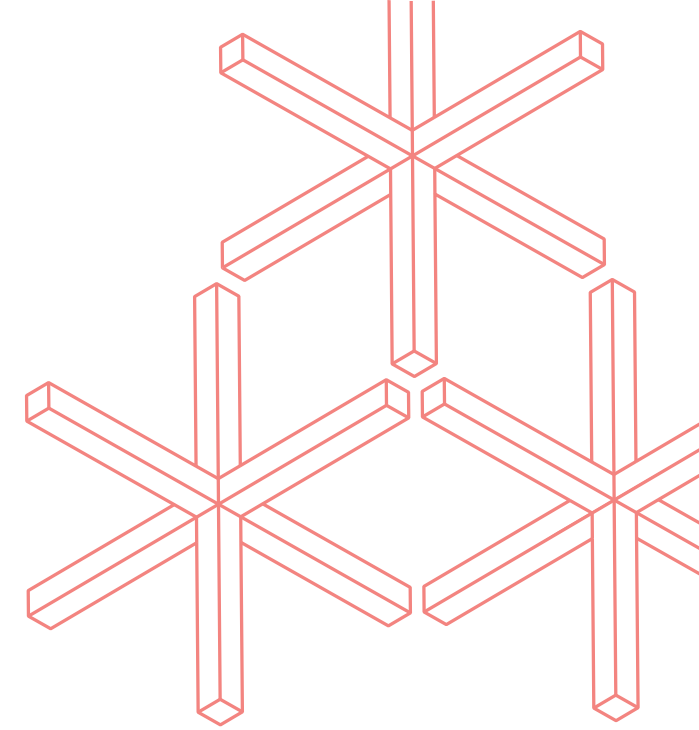
Research has shown that taking regular breaks during the workday can improve productivity, and prevent stress and burnout. However, few people take enough breaks during the day, which is why organisations should actively help their workforce to unplug at regular intervals.





# Counter

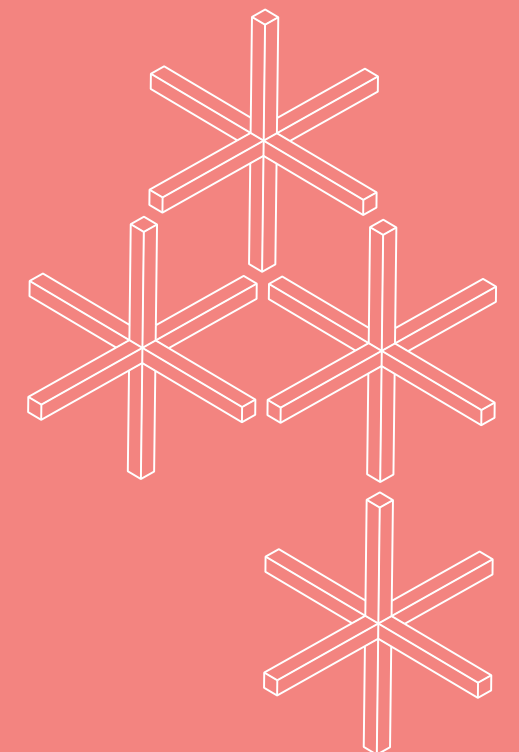
When you design workstations, they need to think about who will be using those stations because just as some jobs are more suited for quiet spaces and privacy, others require a lot of interaction.





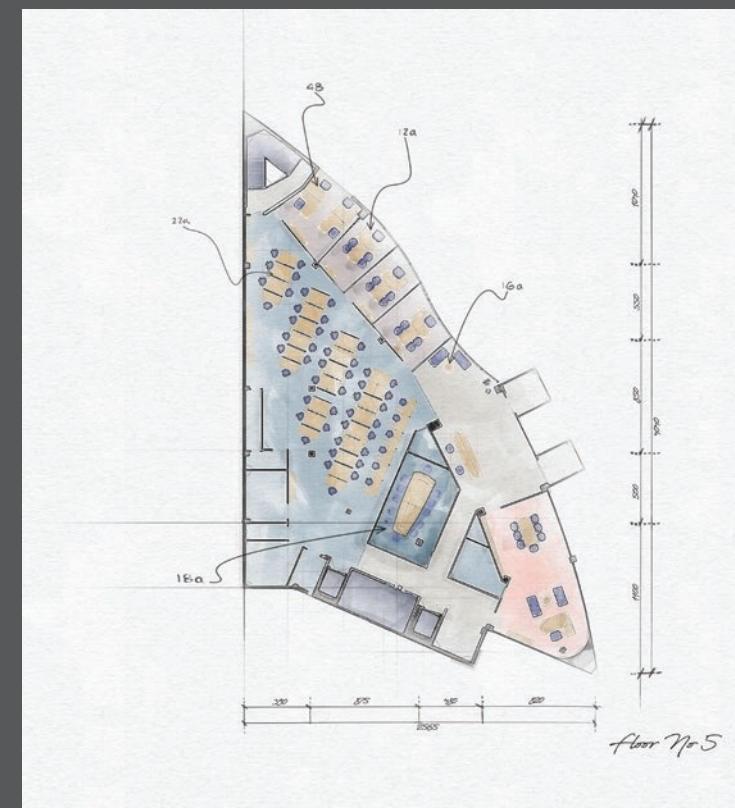
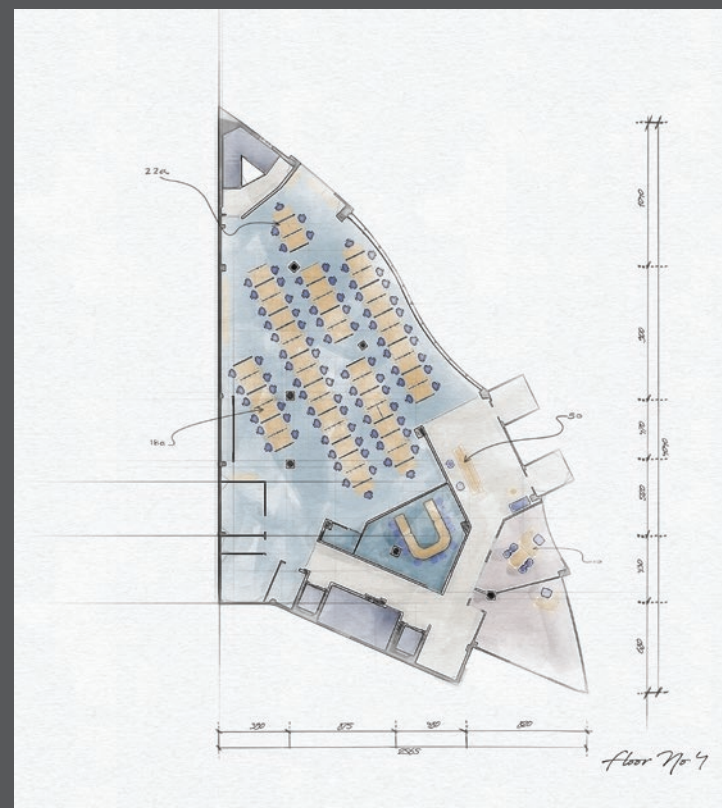
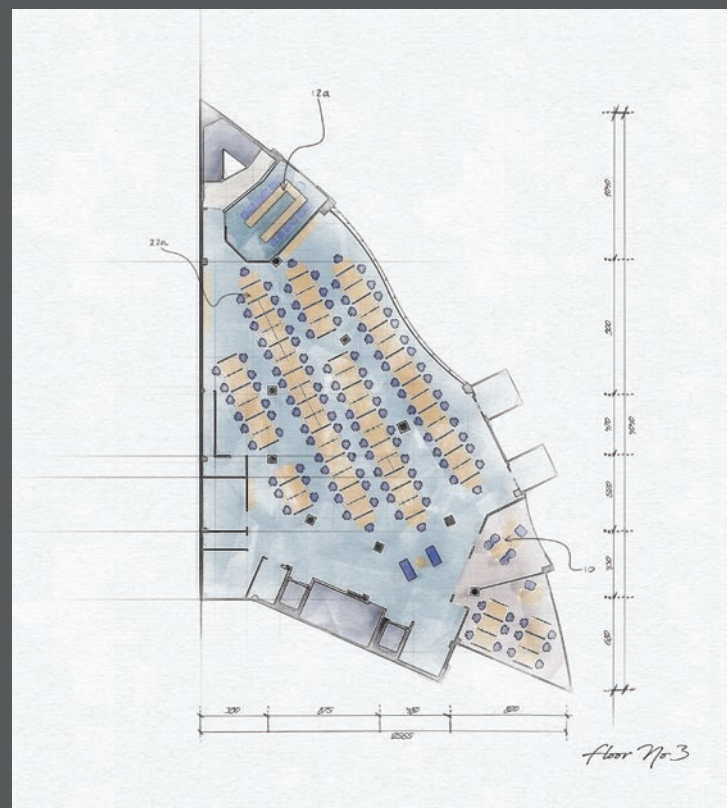
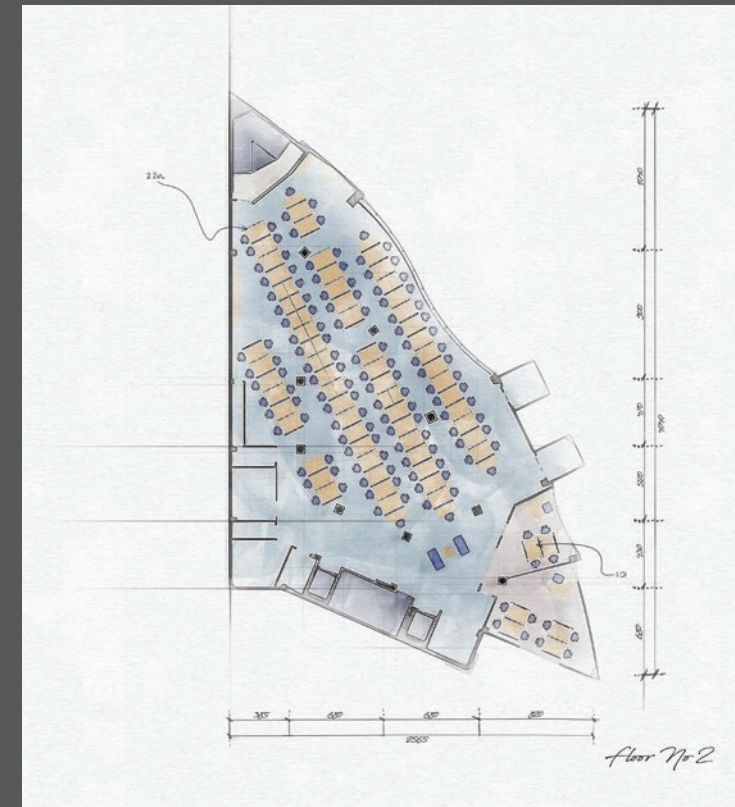
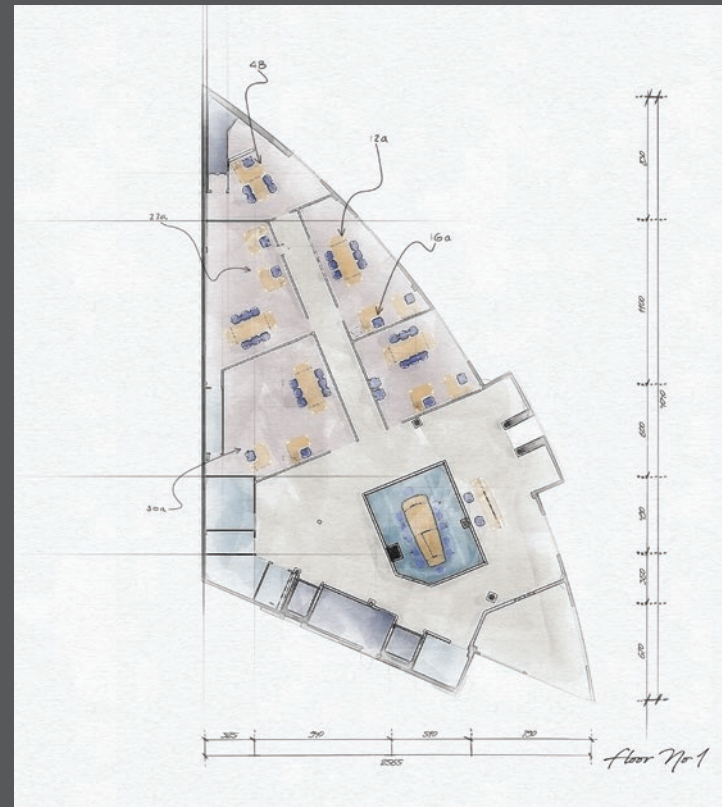
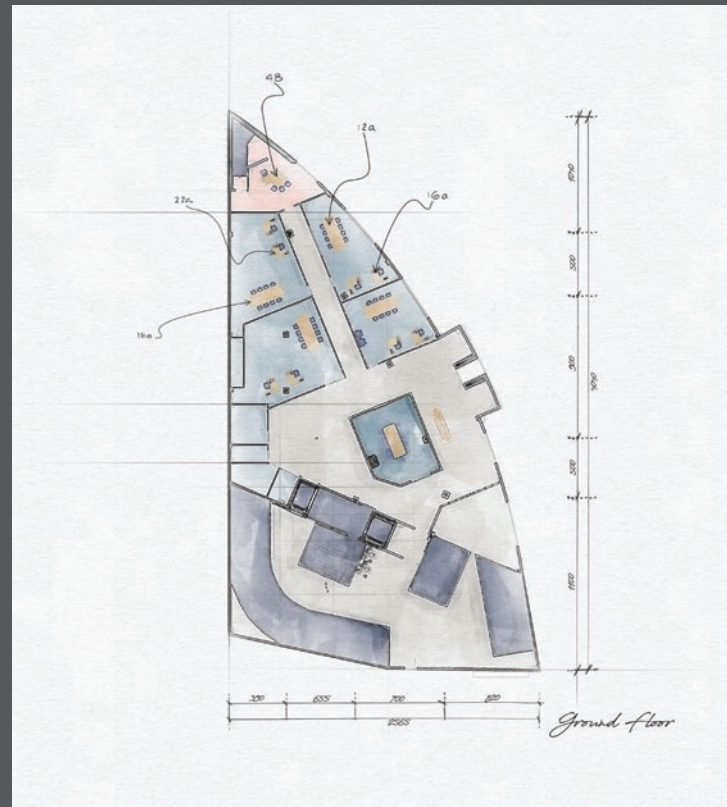
# Manager Set

Leveraging AI and machine learning, analytics can be gathered on employee behaviors, work styles and schedules to help employers make strategic space optimization decisions.

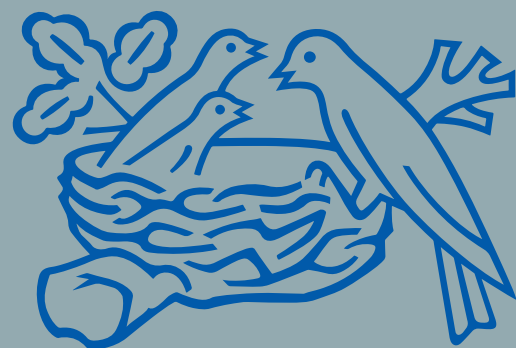
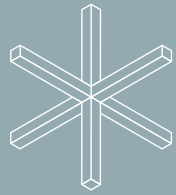
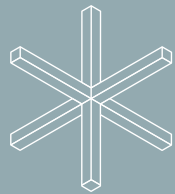
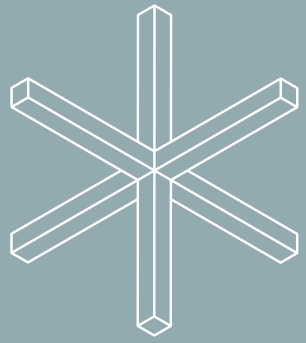




# Goldiran Project Plan







**Nestlé**

# Nestle Iran 2012

Equipping Nestlé Headquarters in Iran, which is based on the strict standards of Nestlé International in various fields such as ergonomics and issues related to workplace standards, at first started very hard and breathtaking, and then, became one of the leading projects of Paadiran.





# Conference Desk

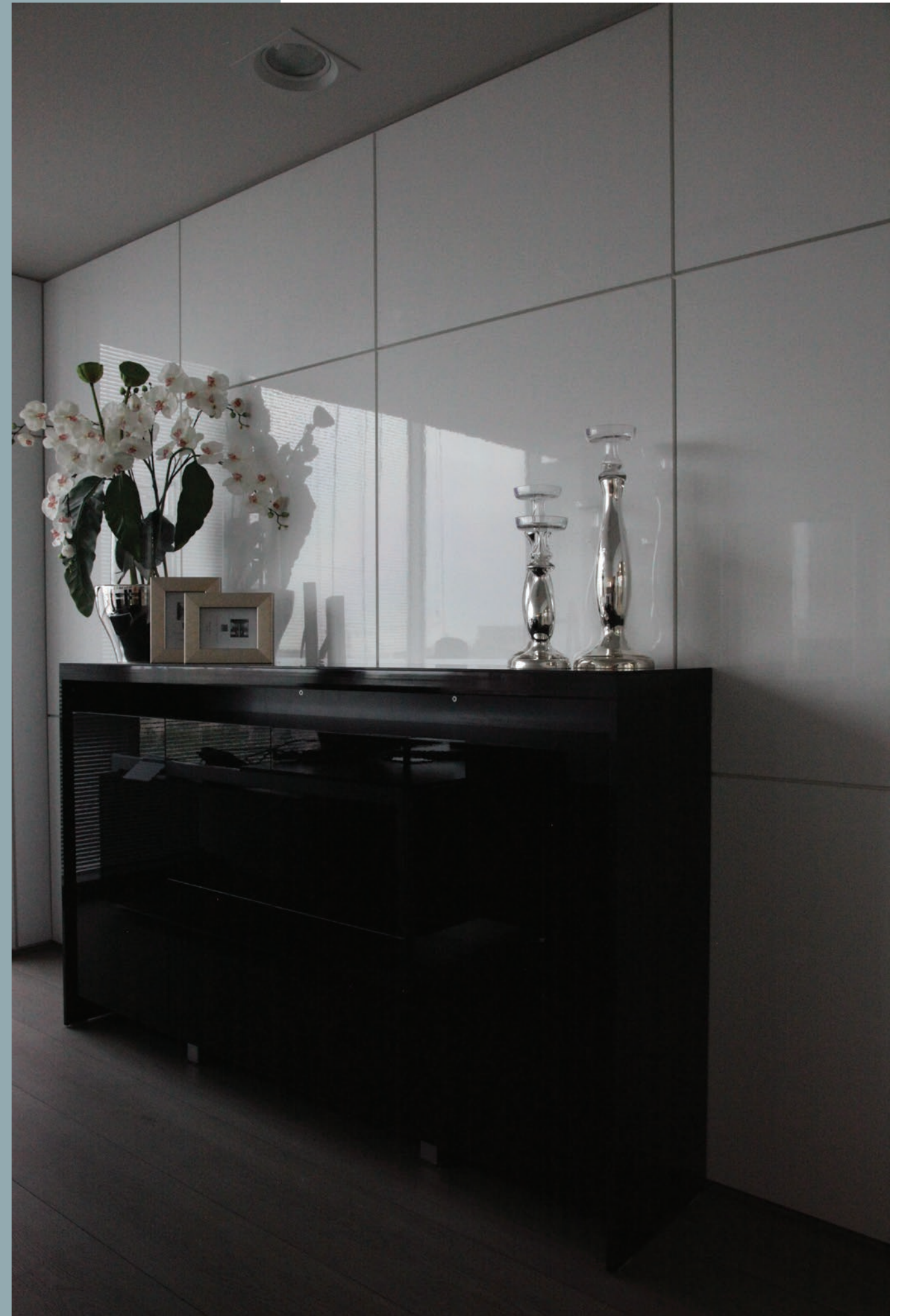
Our offices allow us to be flexible and collaborative in our approach to design in order to create environments that are resilient and adaptable. This is more important than ever as design tackles some of the world's greatest challenges from social injustice to the health pandemic to environmental crises.







Having plants in the office has been shown by a number of studies to reduce stress levels, help workers recover after demanding tasks, and reduce pollutants.







# Executive Set

The most functional spaces employ the latest workplace design trends. This includes those that are:

- Flexible, modular and future-focused
- Activity-based, blended spaces
- Designed to support well-being
- Uniquely appealing to employees
- Equipped for integrated technology



# Meeting Room

To help staff produce their best work effectively and efficiently from home while feeling engaged and healthy, organizations need to create the right ergonomic toolkit. This toolkit could include headsets, monitor arms, ergonomic seating options, and sit-to-stand desks, and may be created by leveraging existing agreements and buying power. Encourage staff to create at-home workspaces and rituals that support their mental and physical wellbeing





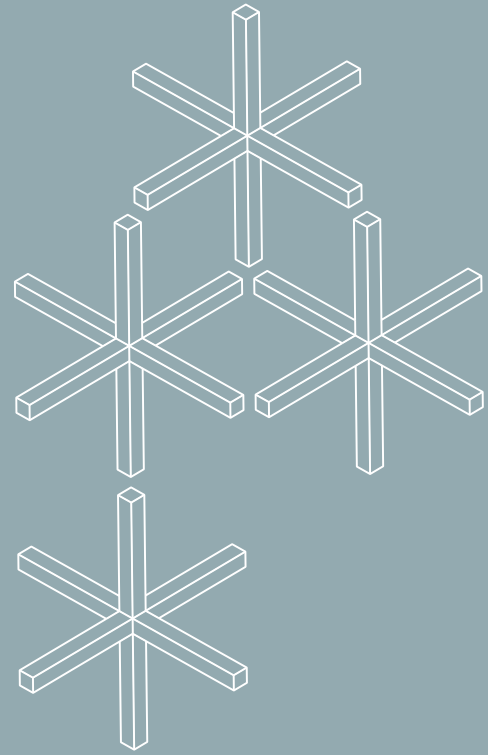


# Workstation

The colors around us affect our perception of the world more than we realize. They impact our moods and how we interact with the world and one another. Some colors are known to soothe us, some to energize, while others distract or even aggravate us.







# Limak Partition

We now value space and the experience of being together more than ever. The office matters as a place to come together with each other for a common purpose. And for employees, choice, privacy, unassigned seating, and health and well-being are top of mind.





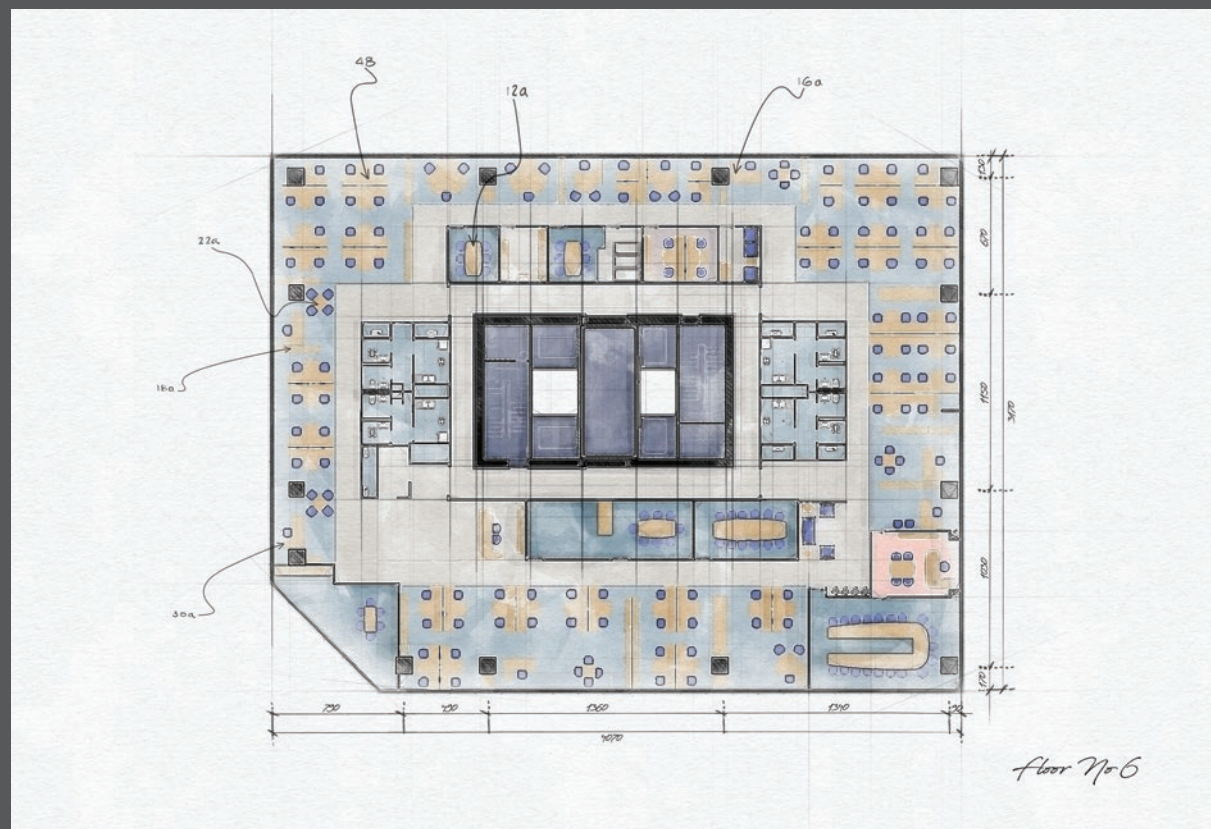
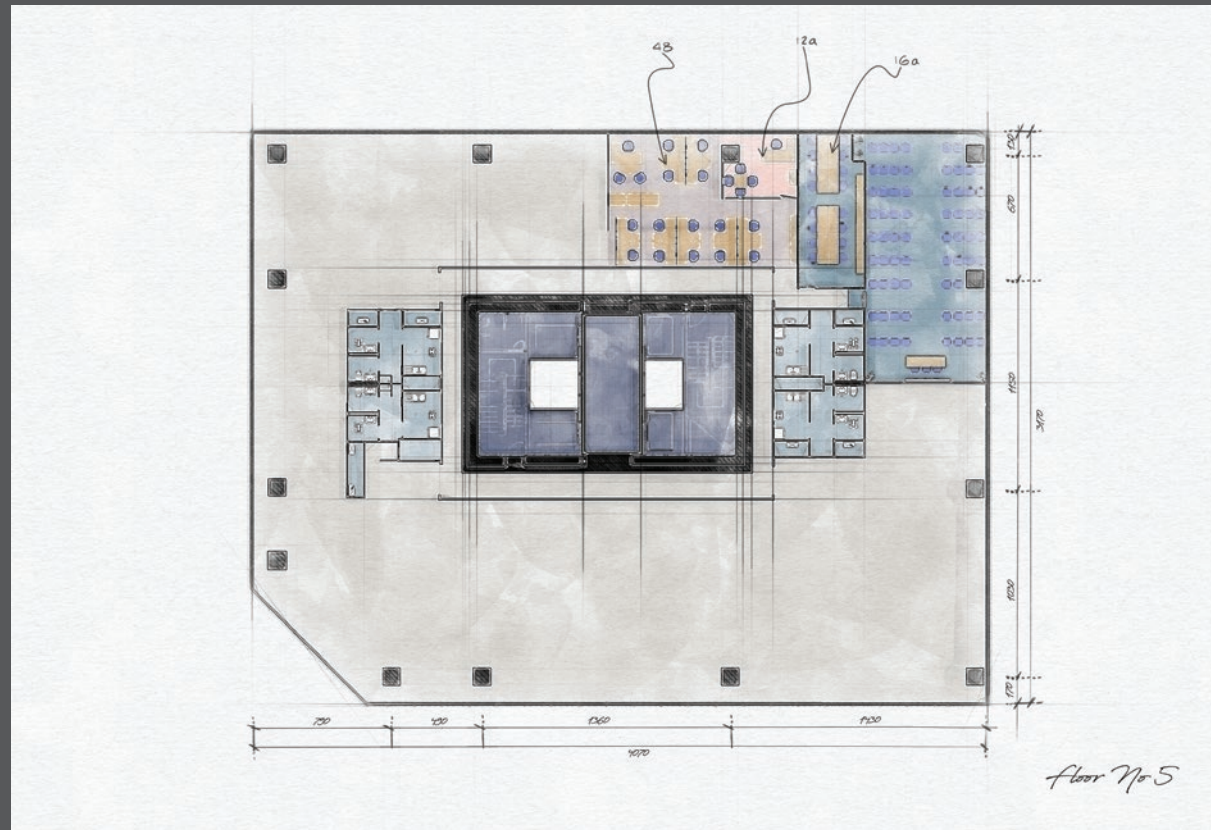
# Conference Desk

Enabling the workplace of the future requires tools that help bridge the experiences of different workplace settings. Emerging smart technologies have the potential to reshape how we approach both work and the workplace. Workplace apps that leverage data from the IoTs and sensors to help empower employees with the information needed so they have options, choices and control.

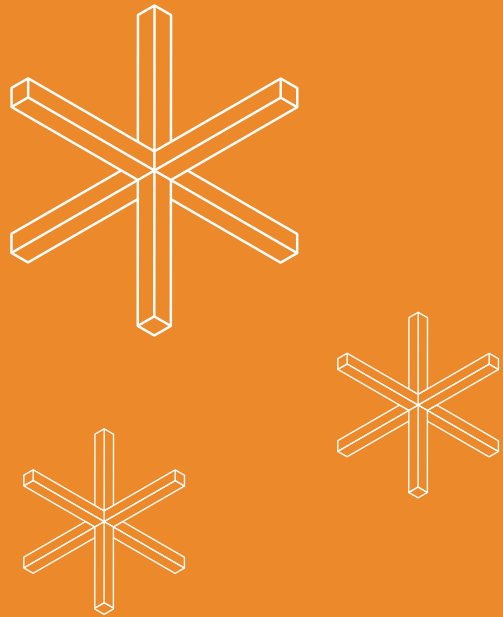




# Nestle Project Plan







# Irancell 2012

Irancell is an Iranian telecommunications company that operates Iran's largest 2G-3G-4G-4.5G mobile network, and fixed wireless TD-LTE internet services. After years of endeavor they managed to win the title of "Irancell; Iran's greatest data operator" and "Leading telecommunication company in the country" for 6 consecutive years.

Irancell headquarter has been designed by Paadiran Company in 2012. Using equipped partitions, executive areas, family of chairs and "space saving" work stations are our solutions to make the office a better place to work.







# Partition





## Wall Cover

We must imagine physical spaces and best practices that truly address our needs, both now and in the future. To begin, we need to move beyond the notion that work happens in a singular place. Instead, we need to create an ecosystem of spaces that, no matter their location and form, support positive work behaviours and empower task completion, engagement and satisfaction.





# Conference Room

A company's brand is closely tied to its culture. Culture is fostered by space and culture is what we want to reclaim. Businesses and employees will need spaces that reflect corporate values. Designers will be challenged to create spaces that support our teams and support social engagement.





# Workstation

A company's brand is closely tied to its culture. Culture is fostered by space and culture is what we want to reclaim. Businesses and employees will need spaces that reflect corporate values. Designers will be challenged to create spaces that support our teams and support social engagement.





The well-designed place not only attracts the right talent, but also inspires people to be more productive and keeps them healthy and safe.



By designing spaces that encourage social connection, like common areas that keep energy high and casual meeting spaces that allow for focused teamwork and informal mentorship, designers create spaces where a sense of community can be fostered and encouraged.



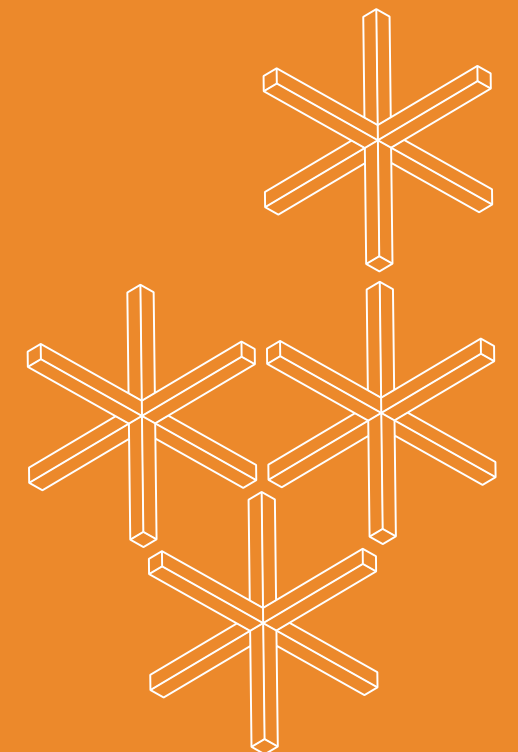
# Wall Cover & Door

Social gathering spaces will need to exist in every workspace so a team of people can work together. With any luck, these spaces will spark the industry disrupting ideas that will push companies forward. Private and semi-private spaces can be offered as an option for those who choose not to or simply cannot work from home





Organizations need to ask people what they want, and with a greater degree of specificity than is typically seen. People are experts in themselves, their own behavior and their preferences. Each person and role deals with very different sets of problems and has unique workplace needs.





# Irancell Project Plan

